

PLAN OF SUBDIVISION OF
REMAINDER D.L. 482.

CARIBOO DISTRICT

SCALE: 1" = 100'

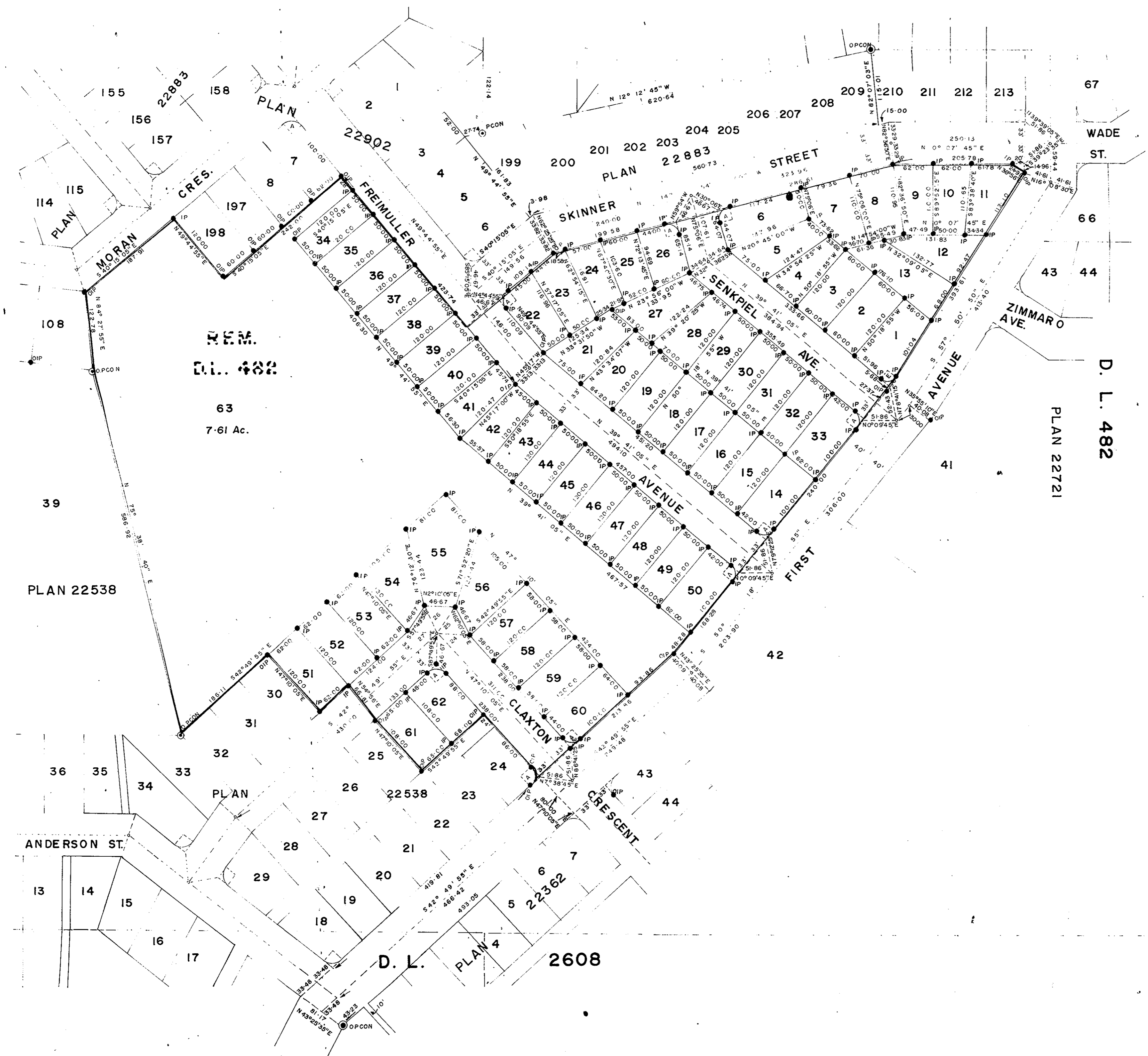
BEARINGS ARE ASTRONOMIC DERIVED FROM PLAN 22883

LEGEND:

- PCON - STANDARD CONCRETE POST
- IP - STANDARD IRON POST
- - DENOTING "OLD"

PLAN NO. 24318
DEPOSITED IN THE LAND REGISTRY OFFICE AT
PRINCE GEORGE THIS 13 DAY OF SEPTEMBER 1978.

C.T. SCHOOLEY
REGISTRAR



AREA WITHIN RED OUTLINE = 21.47 Ac.

NO.	BEARING	DISTANCE
24	N 2° 10' 05" E	46.67
25	N 57° 49' 55" W	46.67
26	S 62° 10' 05" W	46.67
27	S 2° 10' 05" W	46.67

CURVE DATA	
A	Δ = 90°00'00" R = 20.00 T = 20.00 ARC = 31.42
E	Δ = 97°31'55" R = 17.53 T = 20.00 ARC = 29.84

I, DALE KEOWN OF THE CITY OF PRINCE GEORGE, BRITISH COLUMBIA LAND SURVEYOR MAKE OATH AND SAY THAT I WAS PRESENT AT AND DID PERSONALLY SUPERINTEND THE SURVEY REPRESENTED BY THIS PLAN AND THAT THE SURVEY AND PLAN ARE CORRECT.
THE SAID SURVEY WAS COMPLETED ON THE 5th DAY OF September 1978.

Dale Keown
DALE KEOWN, B.C.L.S.

SWORN BEFORE ME AT PRINCE GEORGE THIS 5th DAY OF September 1978

Gwyn L. Wilson
A. COMMISSIONER FOR TAKING AFFIDAVITS FOR
BRITISH COLUMBIA

APPROVED UNDER THE LAND REGISTRY ACT THIS 7th DAY OF SEPT. 1978

C. E. Olat
APPROVING OFFICER (CITY OF PRINCE GEORGE)

THE SEAL OF THE CITY OF PRINCE GEORGE WAS AFFIXED HERETO IN THE PRESENCE OF:

MAYOR: *W. Moffat*
CITY CLERK: *D. W. Buchanan*

PLAN EXCEPTIONS:

- PLAN 1474
- PLAN 10836
- PLAN 23362
- PLAN 22538
- PLAN 22721
- PLAN 22883
- PLAN 22902

THIS PLAN LIES WITHIN THE FRASER FORT GEORGE REGIONAL DISTRICT

McWILLIAM-WHYTE-GOBLE ASSOCIATES
B.C. LAND SURVEYORS
PRINCE GEORGE - KAMLOOPS - SMITHERS
REF NO. 74100-25H