

PLAN OF SUBDIVISION OF  
 LOT B, PLAN 6873  
 DISTRICT LOT 4040  
 CARIBOO DISTRICT - BRITISH COLUMBIA

SCALE: 1" = 50'

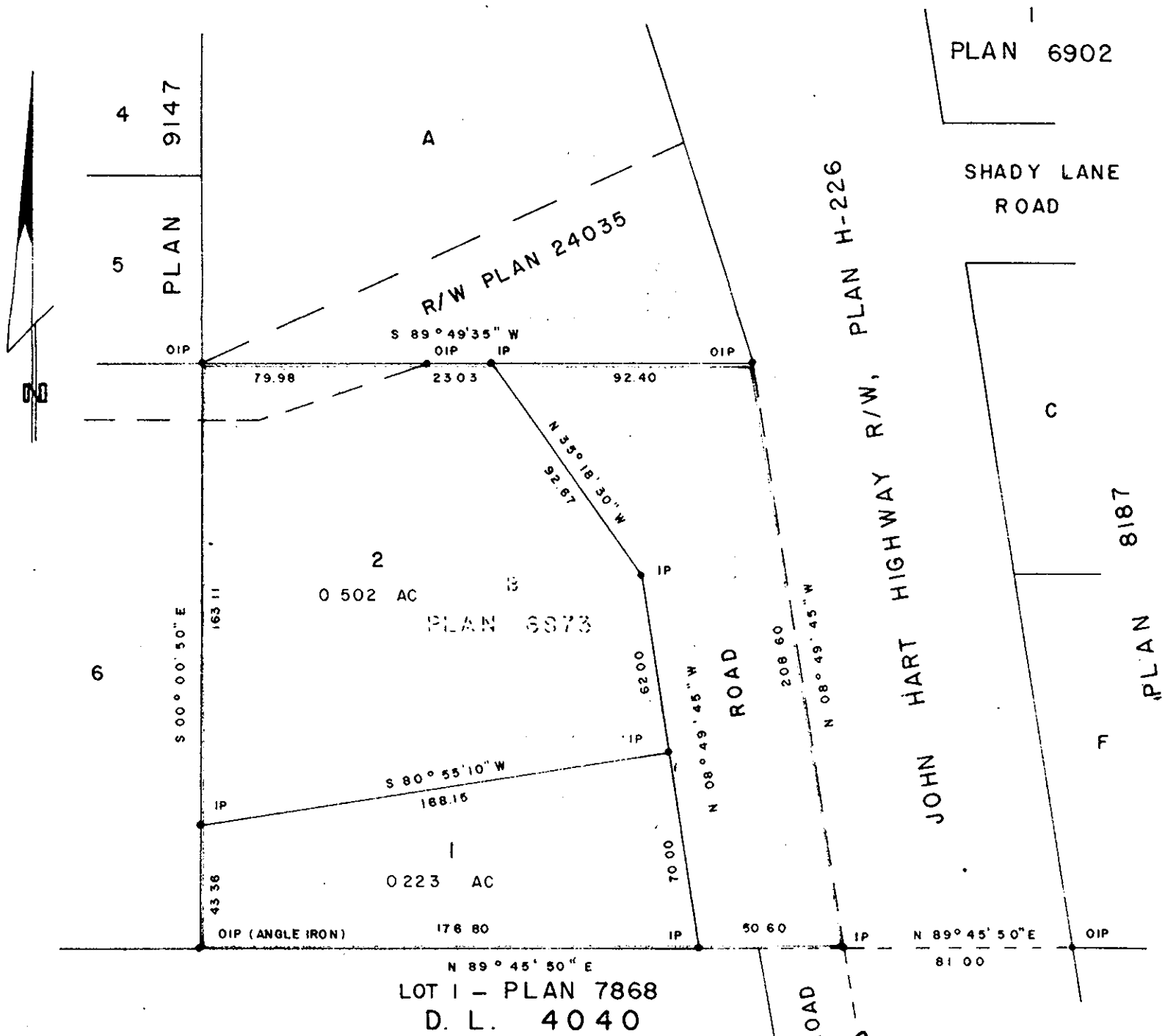
NOTE: Bearings are astronomic, derived from the north boundary of Lot B, Plan 6873, as shown on Plan 24035.

LEGEND: • OIP denotes an old iron pin found.  
 • IP denotes an iron pin set.

PLAN N<sup>o</sup> 24305

Deposited in the Land Registry Office at Prince George, B.C. this 5 day of SEPTEMBER, 1978.

E.T. SCHOOLEY  
 Registrar



I, DONALD A. DUFFY of the City of Prince George, a British Columbia Land Surveyor, make oath and say that I was present at and did personally superintend the survey represented by this plan and that the survey and plan are correct. The said survey was completed on the 30 day of JUNE, 1978.

Owner Frederick George P... [Signature]

Witness [Signature]

Approved under the Land Registry Act this 25 day of AUG, 1978

Approving Officer, City of Prince George [Signature]

Sworn before me this 5 day of JULY, 1978

INLAND TRUST AND SAVINGS CORPORATION LIMITED

This plan lies within the Fraser-Fort George Regional District.

A Commissioner for taking Affidavits for British Columbia

W. D. USHER & ASSOCIATES  
 LAND SURVEYORS  
 PRINCE GEORGE - B.C.  
 LD 21 10139