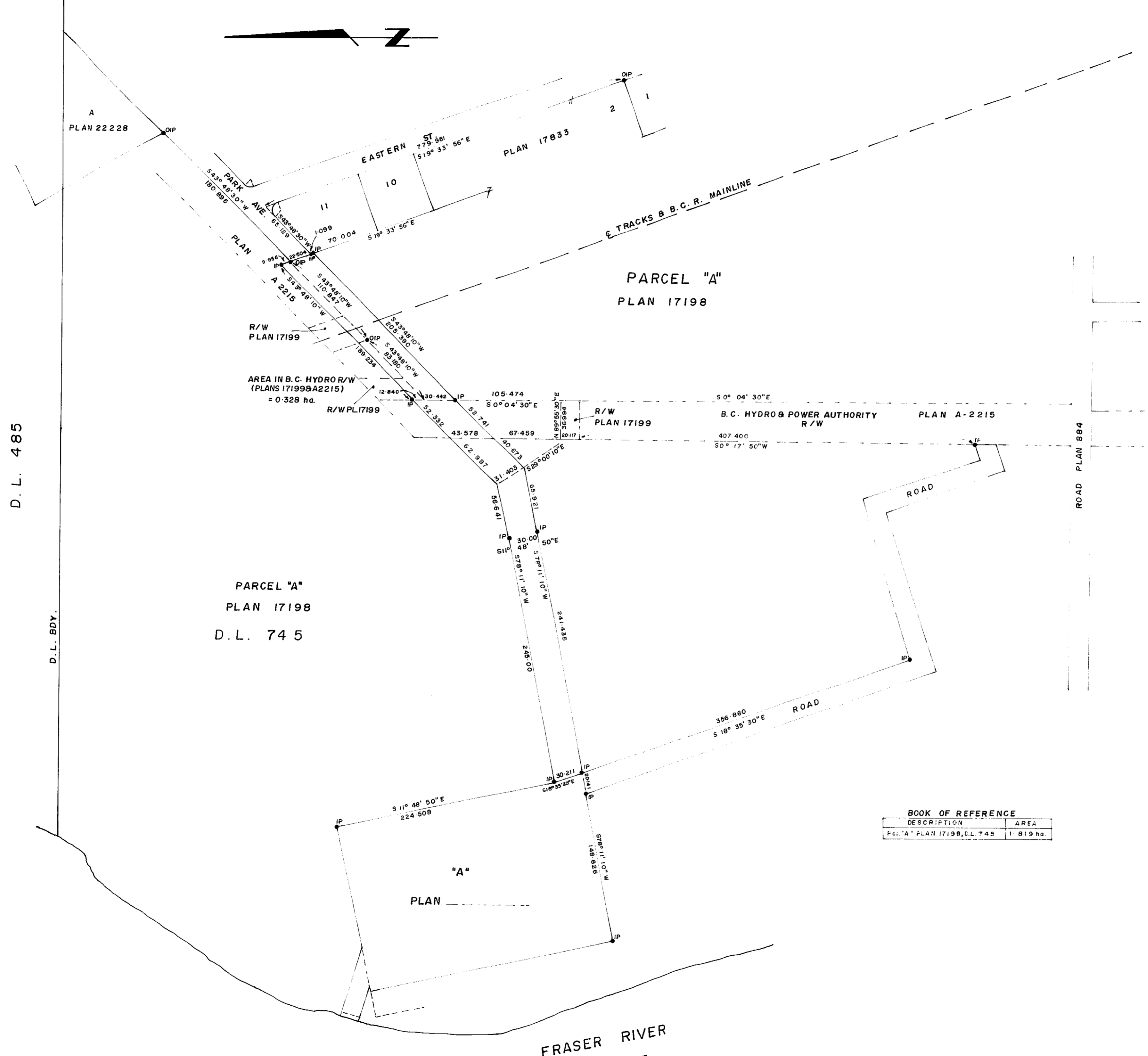


26-FF

2423

PLAN NO. 24 299  
DEPOSITED IN THE LAND REGISTRY OFFICE  
AT PRINCE GEORGE ON THE 26 DAY OF  
SEPTEMBER 1978

G.T. SCHOOLEY  
REGISTRAR  
P.P. C.T.



PLAN OF RIGHT OF WAY IN  
PARCEL "A" PLAN 17198 OF PLAN 884  
D. L. 745 CARIBOO DISTRICT  
SCALE: 1: 2000 1cm. = 20 m  
DISTANCES ARE IN METRES & DECIMALS  
THEREOF

BEARINGS ARE ASTRONOMIC DERIVED FROM PLAN 17199  
● PP ..... STANDARD PIPE POST  
● IP ..... STANDARD IRON POST  
O ..... DENOTING "OLD"

I, V. BARTELL OF THE CITY OF PRINCE GEORGE BRITISH COLUMBIA  
LAND SURVEYOR, MAKE OATH AND SAY THAT I WAS PRESENT AT  
AND DID PERSONALLY SUPERINTEND THE SURVEY REPRESENTED  
BY THIS PLAN AND THAT THE SURVEY AND PLAN ARE CORRECT.  
THE SAID SURVEY WAS COMPLETED ON THE 21 DAY OF August  
1978.

*V. Bartell*  
V. BARTELL B. C. L. S.

SWORN BEFORE ME AT PRINCE GEORGE THIS 21 DAY OF August  
1978

*[Signature]*  
A COMMISSIONER FOR TAKING AFFIDAVITS  
FOR BRITISH COLUMBIA

BOOK OF REFERENCE

| DESCRIPTION                  | AREA      |
|------------------------------|-----------|
| Pc. 'A' PLAN 17198, D.L. 745 | 1.819 ha. |

THIS PLAN LIES WITHIN THE FRASER FORT GEORGE REGIONAL  
DISTRICT.

McWILLIAM-WHYTE-GOBLES ASSOCIATES  
B. C. LAND SURVEYORS  
PRINCE GEORGE - KAMLOOPS-SMITHERS  
REF. NO. 78 112