

26-FF

24298

PLAN OF RIGHT OF WAY IN  
 LOTS I TO II PLAN 17833 &  
 PARCEL 'A' PLAN 17198 OF PLAN 884  
 D.L. 745 CARIBOO DISTRICT

SCALE: 1:2000 1cm. = 20m.  
 DISTANCES ARE IN METRES AND DECIMALS THEREOF

BEARINGS ARE ASTRONOMIC DERIVED FROM PRINCE GEORGE GRID REFERRED TO  
 LONGITUDE W 122° 32' 15"  
 LATITUDE N 53° 54' 38" & PLAN 17198

LEGEND:

- IP. --- STANDARD IRON POST
- --- DENOTING "OLD"
- WT. --- DENOTING WITNESS

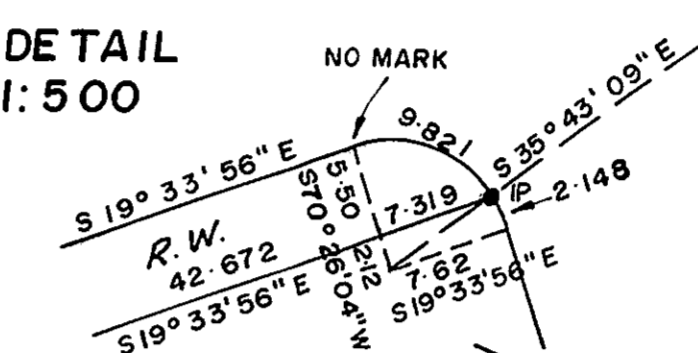


PLAN NO 24298

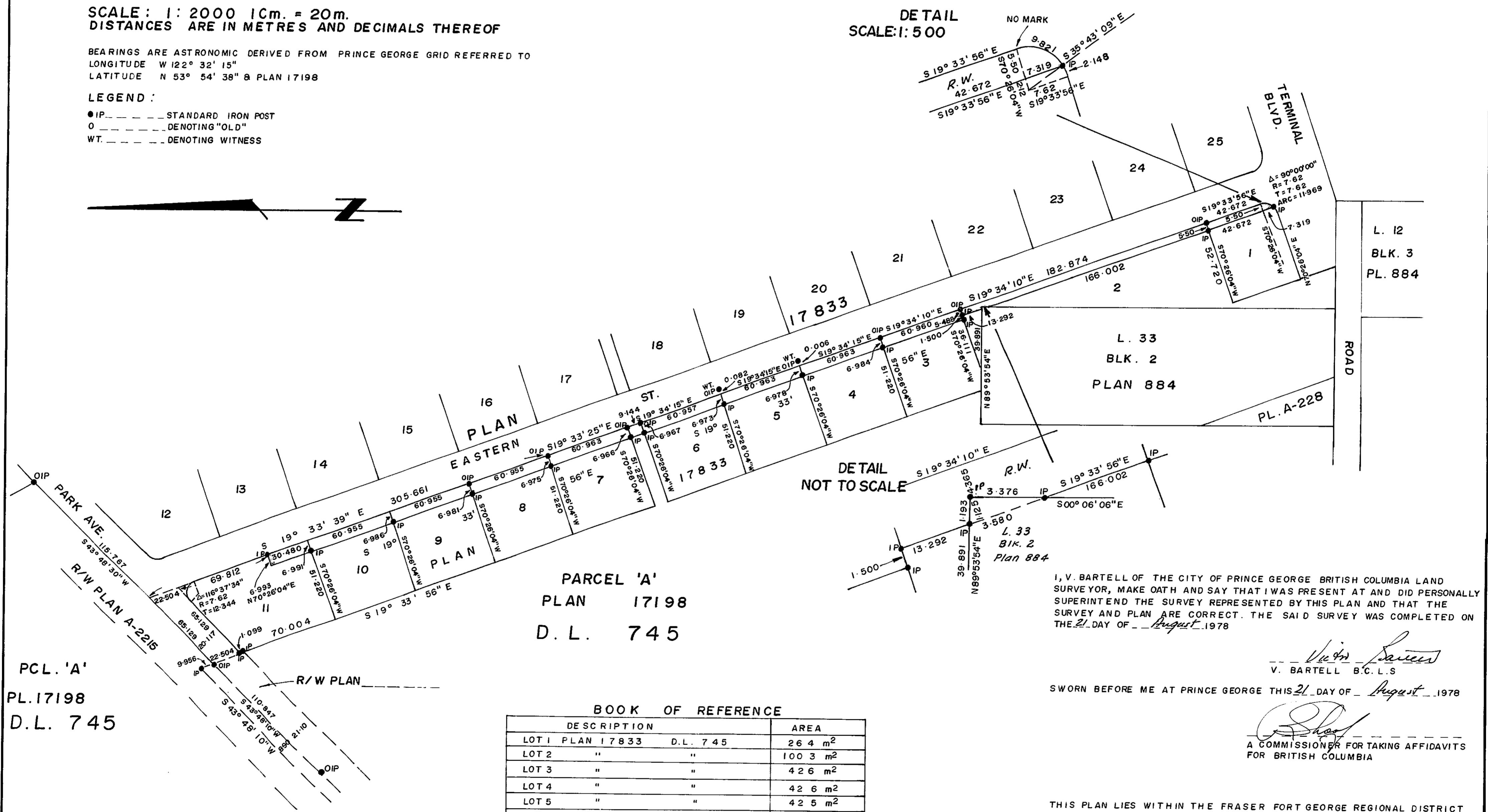
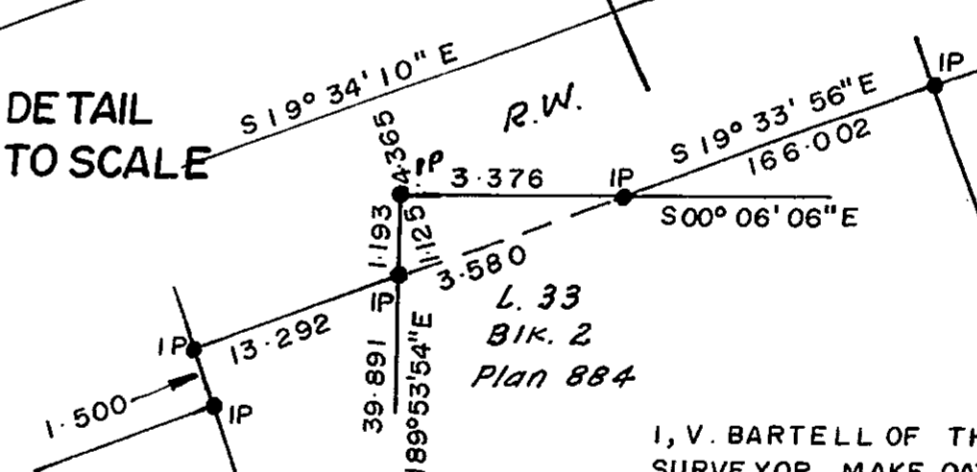
DEPOSITED IN THE LAND REGISTRY OF F.C. AT  
 PRINCE GEORGE ON THE 21 DAY OF August 1978

F. T. Schooley  
 REGISTRAR

DETAIL  
 SCALE: 1:500



DETAIL  
 NOT TO SCALE



PARCEL 'A'  
 PLAN 17198  
 D.L. 745

PCL. 'A'  
 PL. 17198  
 D.L. 745

BOOK OF REFERENCE		AREA
DESCRIPTION		
LOT 1 PLAN 17833	D.L. 745	26.4 m <sup>2</sup>
LOT 2	"	100.3 m <sup>2</sup>
LOT 3	"	42.6 m <sup>2</sup>
LOT 4	"	42.6 m <sup>2</sup>
LOT 5	"	42.5 m <sup>2</sup>
LOT 6	"	42.5 m <sup>2</sup>
PCL. A PLAN 17198 OF PLAN 884	D.L. 745	64 m <sup>2</sup>
LOT 7 PLAN 17833	"	42.5 m <sup>2</sup>
LOT 8	"	42.5 m <sup>2</sup>
LOT 9	"	42.6 m <sup>2</sup>
LOT 10	"	42.6 m <sup>2</sup>
LOT 11	"	21.3 m <sup>2</sup>

I, V. BARTELL OF THE CITY OF PRINCE GEORGE BRITISH COLUMBIA LAND SURVEYOR, MAKE OATH AND SAY THAT I WAS PRESENT AT AND DID PERSONALLY SUPERINTEND THE SURVEY REPRESENTED BY THIS PLAN AND THAT THE SURVEY AND PLAN ARE CORRECT. THE SAID SURVEY WAS COMPLETED ON THE 21 DAY OF August 1978

V. Bartell  
 V. BARTELL B.C.L.S.

SWORN BEFORE ME AT PRINCE GEORGE THIS 21 DAY OF August 1978

A Commissioner for Taking Affidavits  
 FOR BRITISH COLUMBIA

THIS PLAN LIES WITHIN THE FRASER FORT GEORGE REGIONAL DISTRICT

McWILLIAM - WHYTE - GOBLE & ASSOCIATES  
 B.C. LAND SURVEYORS  
 PRINCE GEORGE - KAMLOOPS - SMITHERS  
 REF. NO. 78112