

26-FF-226

24291

PLAN No. 24291

Deposited in the Land Registry Office at
Prince George this 31 day of Aug 1978

EXPLANATORY PLAN TO ACCOMPANY BY LAW No. 3271
CITY OF PRINCE GEORGE, B.C.,
CLOSING PART OF LANE
ADJOINING LOTS 4, 13, 14, 15 and 16,
BLOCK 12, PLAN 701, D. L. 934,
CARIBOO DISTRICT.

E.T. Schooley
Registrar

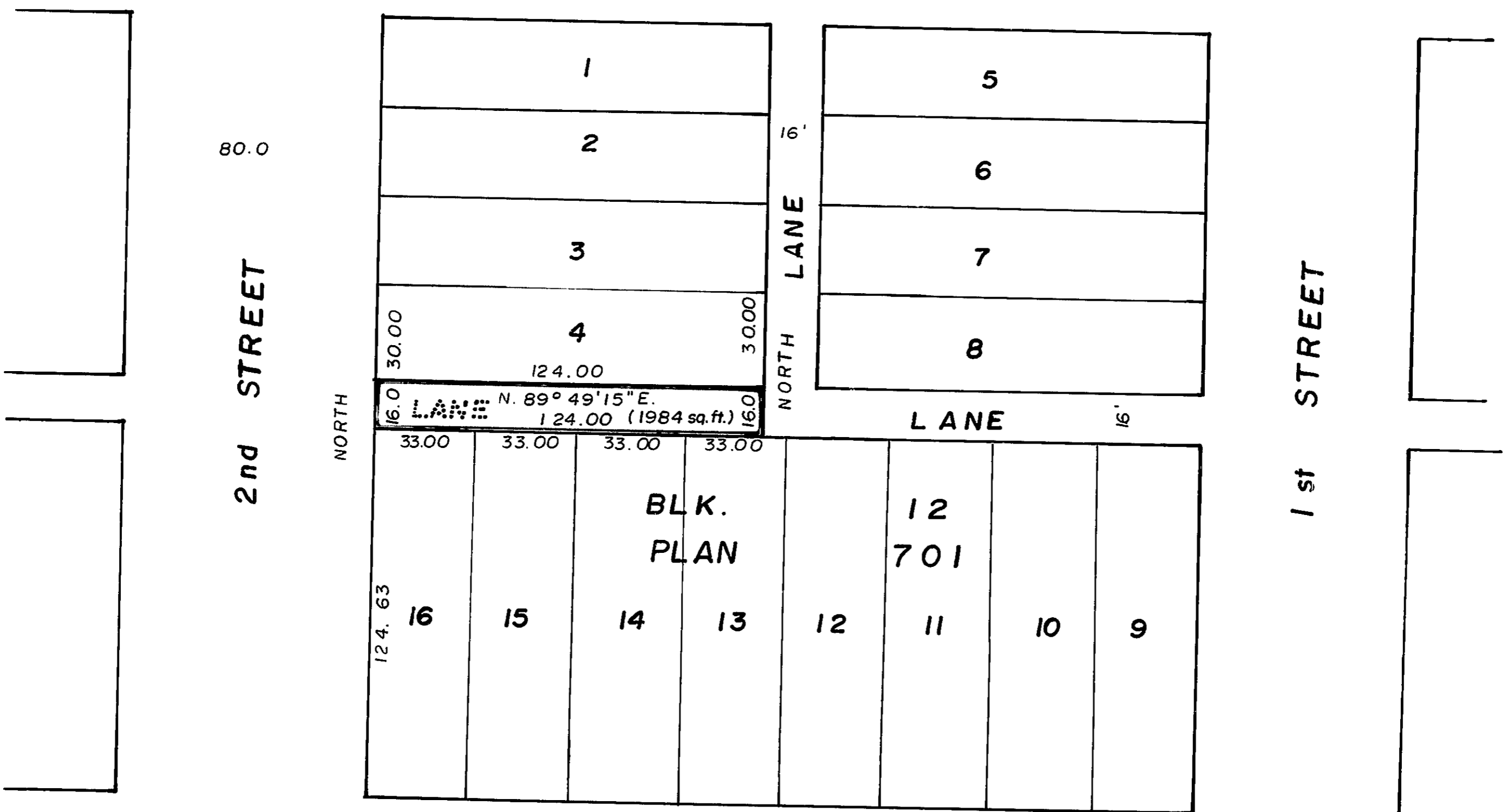
Scale: 1" = 50'

PLAN 1409
D. L. 417



D. L. 934

D. L. B.D.Y.



AREA WITHIN RED OUTLINE- 1984 sq. ft.

CERTIFIED CORRECT
according to Plan 23611,
this 15 day of June 1978.

V. Bartell
V. Bartell, B.C. L.S.

This plan lies within the Fraser
Fort George Regional District.

McWILLIAM, WHYTE, GOBLE, & ASSOCIATES,
B.C. LAND SURVEYORS,
PRINCE GEORGE - KAMLOOPS - SMITHERS,

REF. NO. 78078

D. L. 934.