

88288

PLAN OF SUBDIVISION OF PARTS OF  
LOTS 9 & 10, PLAN 1243  
DISTRICT LOT 632  
CARIBOO DISTRICT - BRITISH COLUMBIA

SCALE: 1" = 200'

NOTE: Bearings are astronomic, derived from the east boundary of Blackburn Road as shown on Plan 23513.

LEGEND: • OPP denotes an old pipe post found.  
• OIP denotes an old iron pin found.  
• IP denotes an iron pin set.

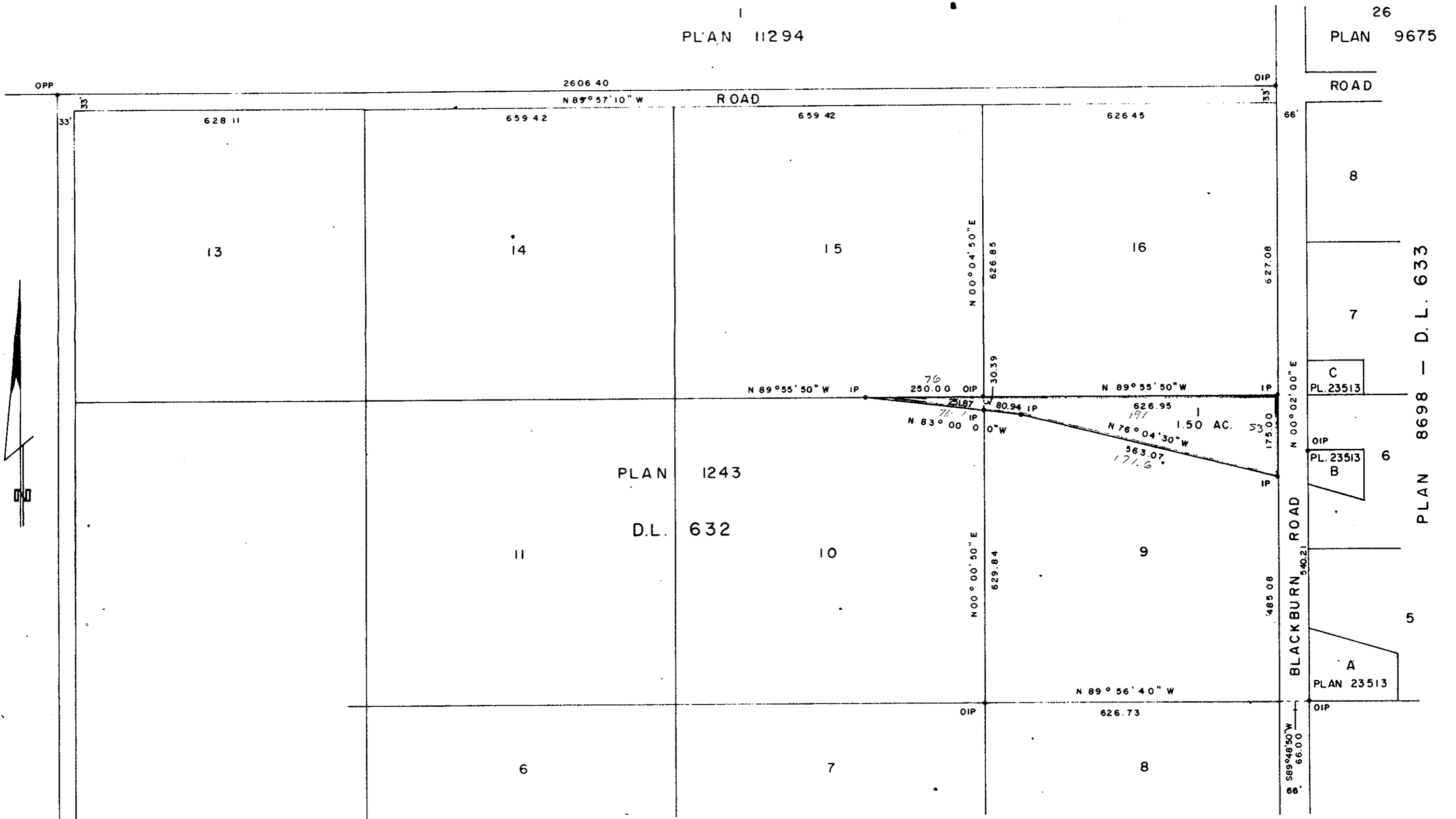
PLAN N<sup>o</sup> 24288

Deposited in the Land Registry Office at Prince George, B.C. this 31 day of AUGUST, 1978.

E.T. SCHOOLEY  
Registrar

PLAN 11294

26  
PLAN 9675



I, DONALD A. DUFFY of the City of Prince George, a British Columbia Land Surveyor, make oath and say that I was present at and did personally superintend the survey represented by this plan and that the survey and plan are correct. The said survey was completed on the 3rd day of Feb., 1978.

CREDIT FONCIER  
FRANCO CANADIAN

Owner *E. Evernden*

Approved under the Land Registry Act this 15 day of AUG, 1978

Witness *[Signature]*

Approving Officer, City of Prince George *[Signature]*

Sworn before me this 6th day of Feb., 1978.

*[Signature]*  
A Commissioner for taking Affidavits for British Columbia.

This plan lies within the Fraser-Fort George Regional District.