

26

PLAN OF RIGHTS - OF - WAY THROUGH
 LOTS 25 & 26, DISTRICT LOTS 754 & 2013,
 LOT 27, DISTRICT LOT 2013 &
 LOTS 24, 81 & 82, DISTRICT LOT 754
 PLAN 23862
 CARIBOO DISTRICT - BRITISH COLUMBIA

PLAN N^o 24 285

Deposited in the Land Registry
 Office at Prince George, B.C. this
 13 day of SEPTEMBER, 1978

SCALE: 1" = 100'

NOTE: Bearings are astronomic, derived from the west
 boundary of Lot 82 and the east boundary of St.
 Mark Crescent, Plan 23862.

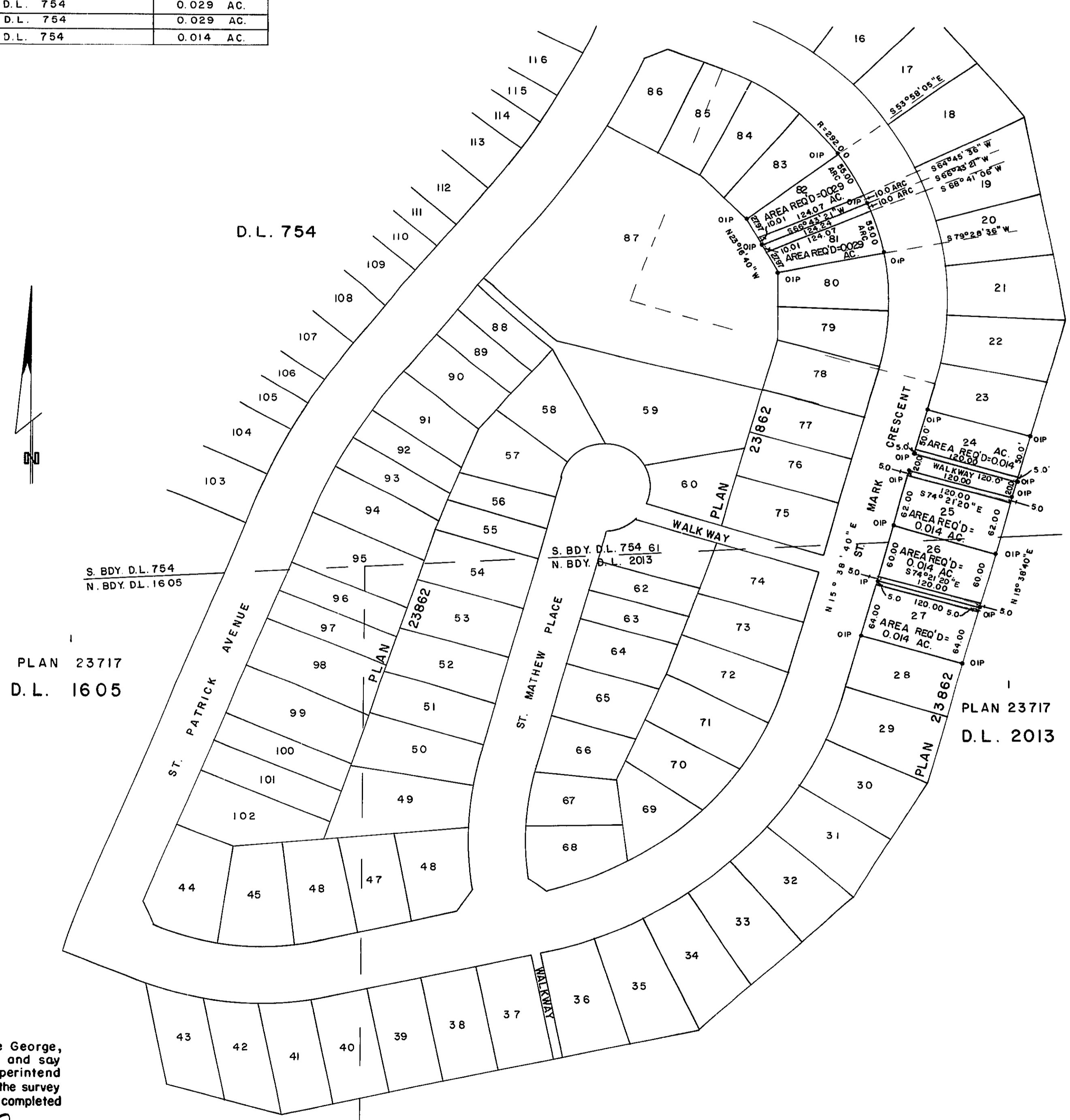
E. T. SCHOOLEY
 Registrar

LEGEND: •OIP denotes an old iron pin found.
 •IP denotes an iron pin set.

Ref: G.

BOOK OF REFERENCE

PARCEL	AREA REQ'D
LOT 25, PLAN 23862, D.L.'S 754 & 2013	0.014 AC.
LOT 26, PLAN 23862, D.L.'S 754 & 2013	0.014 AC.
LOT 27, PLAN 23862, D.L. 2013	0.014 AC.
LOT 81, PLAN 23862, D.L. 754	0.029 AC.
LOT 82, PLAN 23862, D.L. 754	0.029 AC.
LOT 24 PLAN 23862, D.L. 754	0.014 AC.



I, DONALD A. DUFFY of the City of Prince George,
 a British Columbia Land Surveyor, make oath and say
 that I was present at and did personally superintend
 the survey represented by this plan and that the survey
 and plan are correct. The said survey was completed
 on the 31 day of MAY, 1978

[Signature]
 B.C.L.S.

Sworn before me this 1 day of JUNE, 1978

[Signature]
 A Commissioner for Taking Affidavits
 for British Columbia.

This plan lies within the Fraser-Fort George
 Regional District.

W. D. USHER & ASSOCIATES
 LAND SURVEYORS
 PRINCE GEORGE - B.C.