

26-FF

PLAN OF RIGHTS-OF-WAY THROUGH
 LOTS 34, 35, 36, 37, 38 & 39
 DISTRICT LOT 2013
 LOT 40, DISTRICT LOTS 2013 & 1605
 LOTS 41 & 42, DISTRICT LOT 1605
 PLAN 23862
 CARIBOO DISTRICT—BRITISH COLUMBIA

PLAN N^o **24284**

Deposited in the Land Registry
 Office at Prince George, B.C. this
 30 day of AUG., 1978

SCALE: 1" = 50'

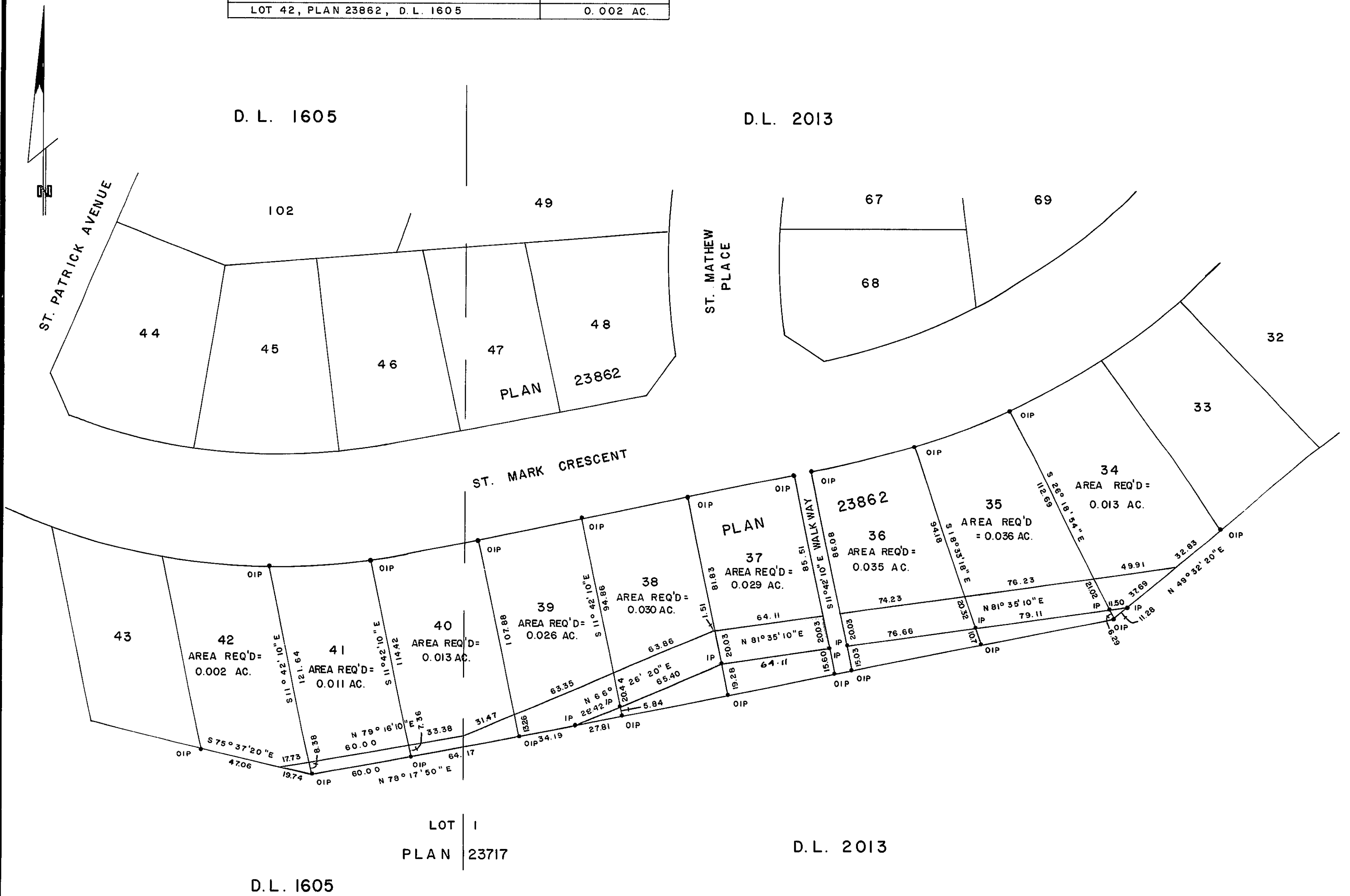
NOTE: Bearings are astronomic, derived from the
 south boundary of Lot 34, Plan 23862.

LEGEND: • OIP denotes an old iron pin found.
 • IP denotes an iron pin set.

Registrar E.T. Schooley

BOOK OF REFERENCE

PARCEL	AREA REQ'D
LOT 34, PLAN 23862, D.L. 2013	0.013 AC.
LOT 35, PLAN 23862, D.L. 2013	0.036 AC.
LOT 36, PLAN 23862, D.L. 2013	0.035 AC.
LOT 37, PLAN 23862, D.L. 2013	0.029 AC.
LOT 38, PLAN 23862, D.L. 2013	0.030 AC.
LOT 39, PLAN 23862, D.L. 2013	0.026 AC.
LOT 40, PLAN 23862, D.L.'S 2013 & 1605	0.013 AC.
LOT 41, PLAN 23862, D.L. 1605	0.011 AC.
LOT 42, PLAN 23862, D.L. 1605	0.002 AC.



I, DONALD A. DUFFY of the City of Prince George,
 a British Columbia Land Surveyor, make oath and say
 that I was present at and did personally superintend
 the survey represented by this plan and that the survey
 and plan are correct. The said survey was completed
 on the 31 day of MAY, 1978

[Signature]
 B.C.L.S.

Sworn before me this 1 day of JUNE, 1978

[Signature]
 A Commissioner for taking Affidavits
 for British Columbia.

This plan lies within the Fraser-Fort George
 Regional District.

W D USHER & ASSOCIATES
 LAND SURVEYORS
 PRINCE GEORGE — B.C.