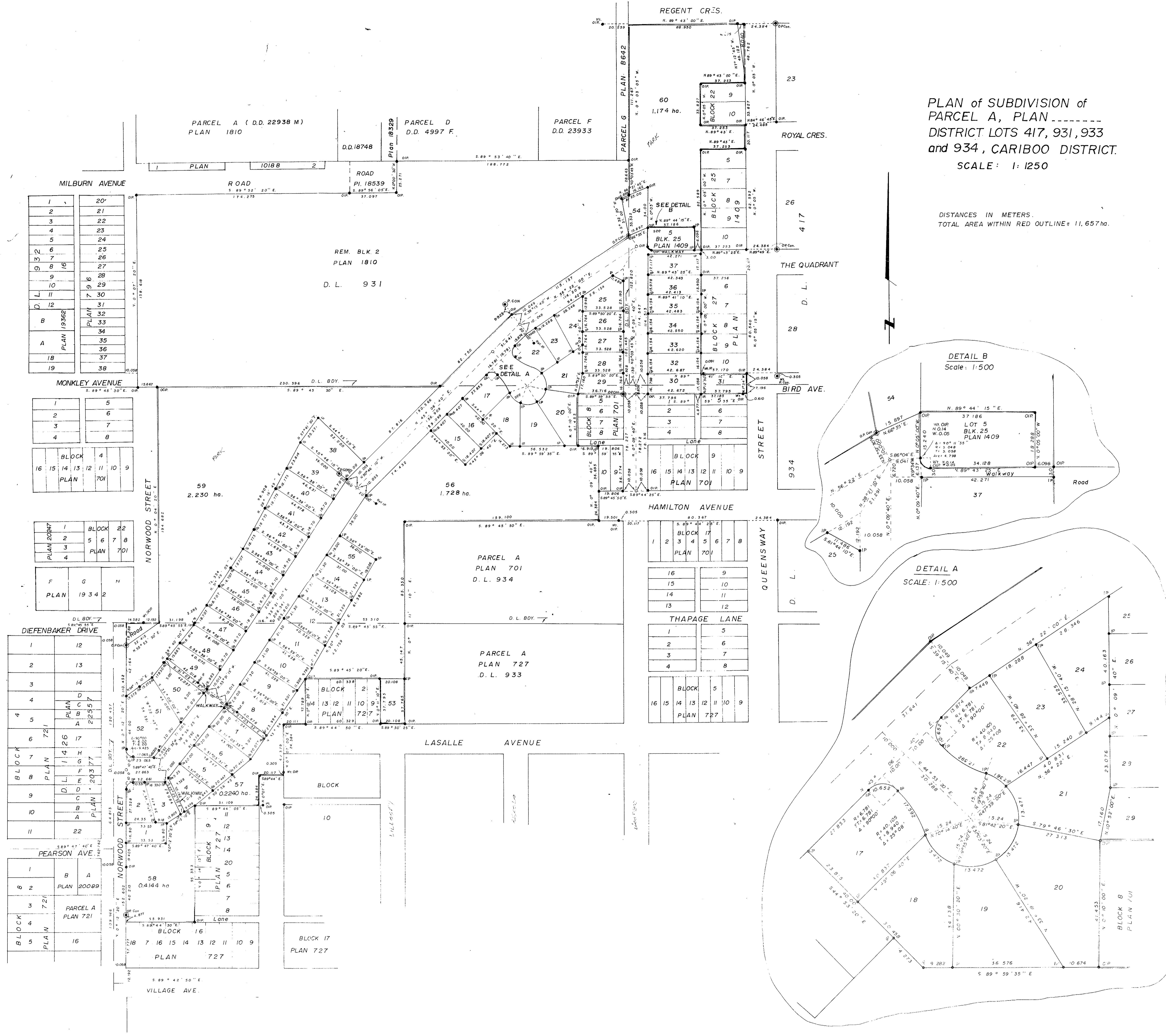


24282

PLAN NO. 77100-4  
DEPOSITED IN THE LAND REGISTRY OFFICE AT  
PRINCE GEORGE THIS 29th DAY OF AUGUST, 1978.  
S. T. GOODELEY,  
REGISTRAR.

PLAN of SUBDIVISION of  
PARCEL A, PLAN -----  
DISTRICT LOTS 417, 931, 933  
and 934, CARIBOO DISTRICT.  
SCALE: 1:1250

DISTANCES IN METERS.  
TOTAL AREA WITHIN RED OUTLINE = 11.657 ha.



BEARINGS ARE ASTROMOMIC DERIVED FROM  
V. B.D.Y. 20th AVE. SHOWN AS 589°58'00"E.  
ON PLAN 1268.  
● P.C.O.N. .... STANDARD CONCRETE POST.  
● S.P. .... STANDARD PIPE POST.  
● S.I.P. .... STANDARD IRON POST.  
● C.I.P. .... CARVED IRON POST.  
O ..... DENOTES "OLD"  
WT ..... DENOTES "WITNESS"

APPROVED UNDER THE LAND REGISTRY ACT  
THIS 11th DAY OF JULY, 1978.  
*[Signature]*  
APPROVING OFFICER  
CITY OF PRINCE GEORGE

I, V. HARTLE, OF THE CITY OF PRINCE GEORGE  
BRITISH COLUMBIA LAND SURVEYOR, MAKE CERTIFY  
THAT I WAS PRESENT AT AND DID PERSONALLY  
SUPERVISE THE SURVEY REPRESENTED BY THIS PLAN  
AND THAT THE SURVEY AND PLAN ARE CORRECT.  
THIS SURVEY WAS COMPLETED ON THE 22nd DAY  
OF AUGUST, 1978.  
*[Signature]*  
V. HARTLE, S.L.S.

SWORN BEFORE ME AT PRINCE GEORGE, B.C.  
THIS 23rd DAY OF AUGUST, 1978.  
*[Signature]*  
A COMMISSIONER FOR THE PROVINCE OF  
BRITISH COLUMBIA

THE SEAL OF THE CITY OF PRINCE GEORGE  
WAS AFFIXED HERETO IN THE PRESENCE OF:

MAYOR *[Signature]*  
CITY CLERK *[Signature]*

"THIS PLAN LIES WITHIN THE FRASER  
PORT GEORGE REGIONAL DISTRICT  
McWILLIAM, WHYTE, GOBLE, & ASSOCIATES,  
B.C. LAND SURVEYORS,  
PRINCE GEORGE - KIMLOOPS - SMITHERS.

REF. NO. 77100-4  
D.L. 417, 933, 934, 934