

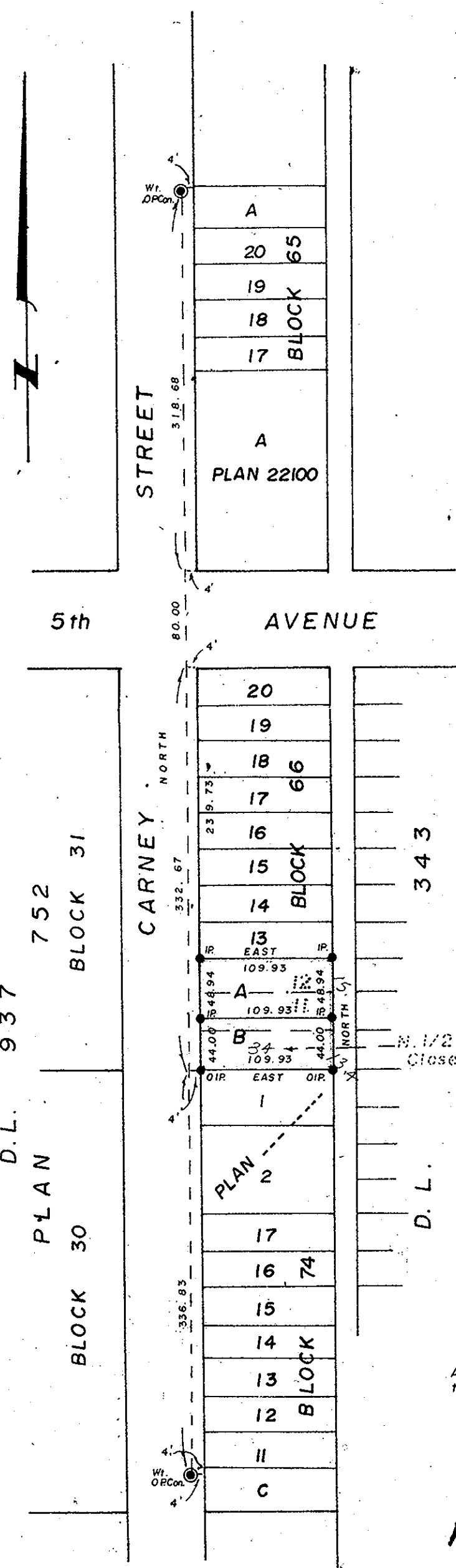
PLOTTED HM.

24243

PLAN NO. \_\_\_\_\_

Deposited in the Land Registry Office at Prince George, this 17th day of AUGUST 1978.

E.T. SCHOOLEY Registrar.



PLAN OF SUBDIVISION OF  
 LOTS 11 and 12, BLOCK 66,  
 and PART of NORTH 1/2 of  
 CLOSED 6th AVENUE ADJACENT TO Lot 11  
 BLOCK 66, PLAN 1268, D.L.343,  
 CARIBOO DISTRICT.

SCALE: 1" = 100'

Bearings are astronomic, derived from East Bdy. of Carney Street shown as North on Plan 1268.

- IP... Standard Iron Post.
- ⊙ PCon... Standard Post in Concrete.
- O... Denotes "old"
- Wt... Denotes "witness"

I, D. Keown, of the City of Prince George, British Columbia Land Surveyor make oath and say that I was present at and did personally superintend the survey represented by this plan and that the survey and plan are correct.

The said survey was completed on the 22<sup>nd</sup> day of July 1977.

*D. Keown*  
 D. Keown, B.C.L.S.

Sworn before me at Prince George, B.C. this 22<sup>nd</sup> day of July 1977.

*W. J. Linn*  
 A Commissioner for taking affidavits for British Columbia.

*Gabriel Beger*  
*Martha Beger*  
 Witness *Victor Beger*

Approved under the Land Registry Act this 23<sup>rd</sup> day of SEPT 1977.

*C. E. Olost*  
 Approving Officer  
 City of Prince George

Reapproved Aug 15/78  
*C. E. Olost*

This plan lies within the Fraser Fort-George Regional District.

McWilliam, Whyte, Goble, & Associates,  
 B.C. Land Surveyors,  
 Prince George - Kamloops - Smithers.

REF. NO. 77038