

# 26-FF

BRITISH COLUMBIA HYDRO & POWER AUTHORITY

PLAN OF RIGHT-OF-WAY THROUGH  
 PLANS B-2069 AND B-3020  
 DISTRICT LOT 2003  
 CARIBOO DISTRICT— BRITISH COLUMBIA

SCALE: 1" = 100'

NOTE: Bearings are astronomic, derived from the southerly boundary of Yellowhead Highway R/W, Plan 22760.

LEGEND: • OIP denotes an old iron pin found.  
 • IP denotes an iron pin set.

PLAN N<sup>o</sup> **24241**  
 Deposited in the Land Registry  
 Office at Prince George, B.C. this  
 18 day of AUGUST, 1978.

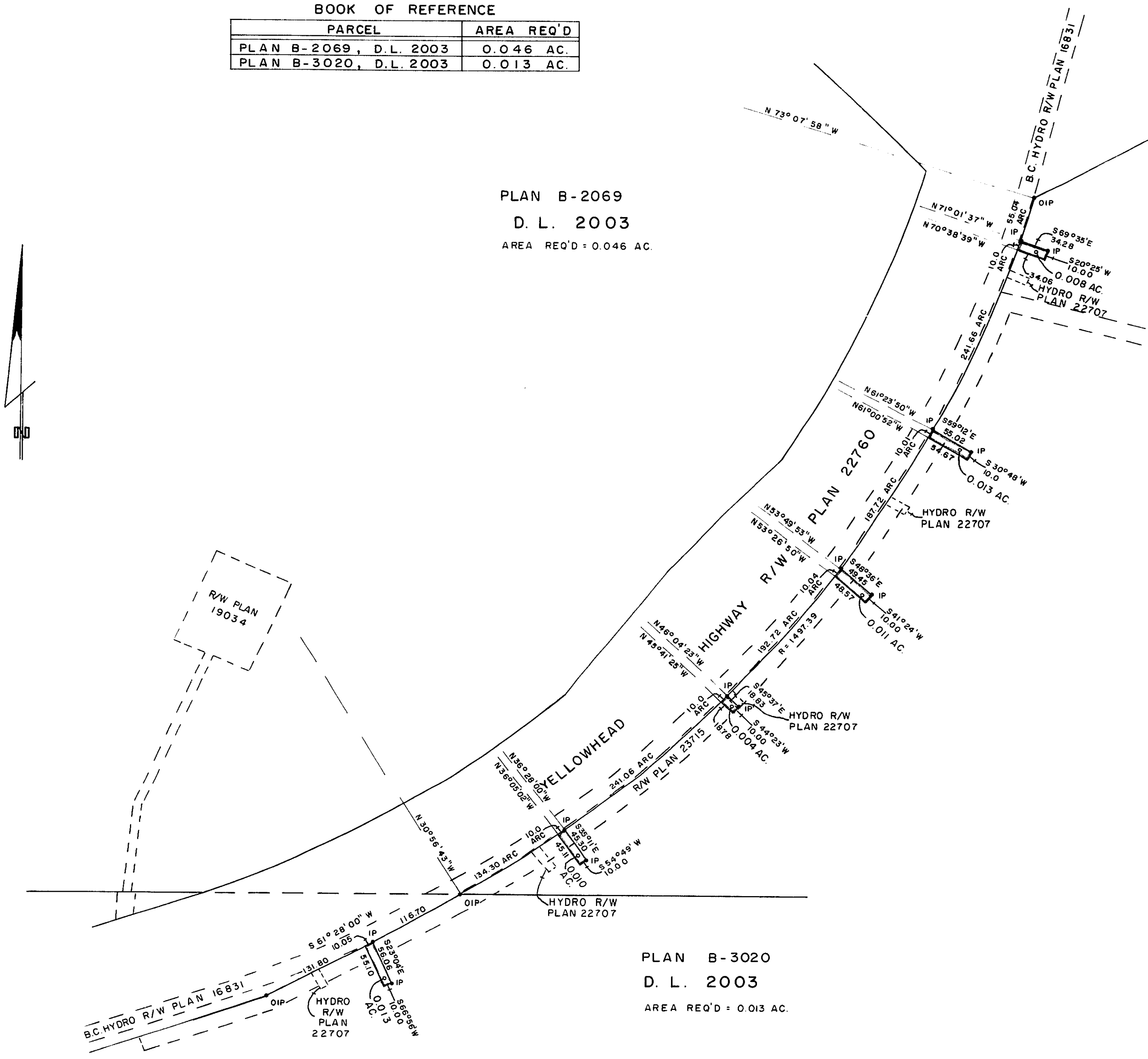
**E. T. SCHOOLEY**  
 Registrar  
 per: *GJ.*

BOOK OF REFERENCE

PARCEL	AREA REQ'D
PLAN B-2069, D.L. 2003	0.046 AC.
PLAN B-3020, D.L. 2003	0.013 AC.

PLAN B-2069  
 D. L. 2003  
 AREA REQ'D = 0.046 AC.

PLAN B-3020  
 D. L. 2003  
 AREA REQ'D = 0.013 AC.



I, DONALD A. DUFFY of the City of Prince George, a British Columbia Land Surveyor, make oath and say that I was present at and did personally superintend the survey represented by this plan and that the survey and plan are correct. The said survey was completed on the 27th day of February, 1978.

*[Signature]*  
 B.C.L.S.

Sworn before me this 15 day of March, 1978.

*[Signature]*  
 A Commissioner for taking Affidavits for British Columbia.

This plan lies within the Fraser-Fort George Regional District.

W D USHER & ASSOCIATES  
 LAND SURVEYORS  
 PRINCE GEORGE — BC.  
 KX 21-25 9051-1