

PLAN No **24178**
 Deposited in the Land Registry
 Office at Prince George, B.C. this
25 day of JULY, 1978

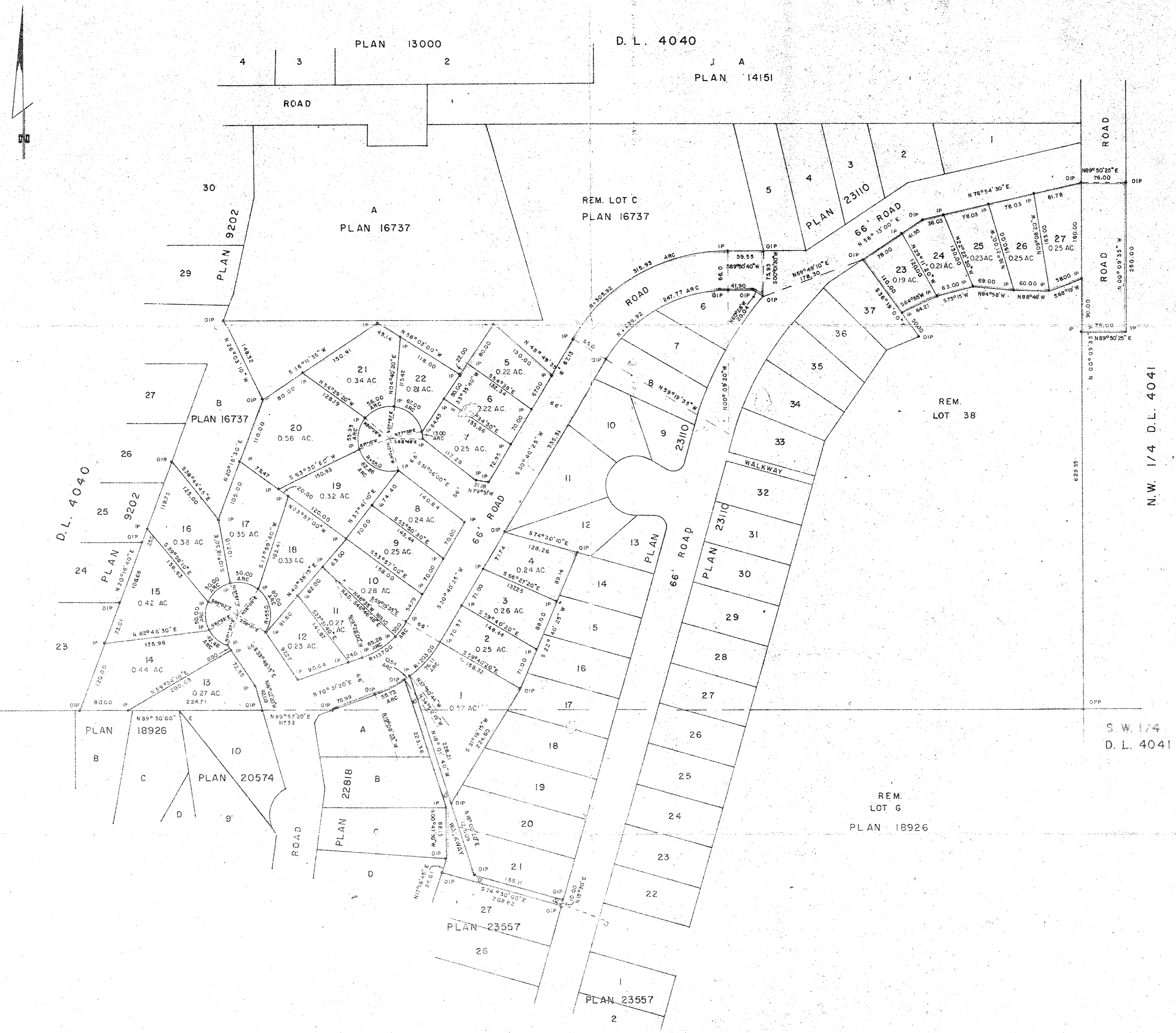
C. T. SCHODALEY
 Registrar

PLAN OF SUBDIVISION OF PARTS OF
 LOT C, PLAN 16737, LOT G, PLAN 18926
 AND LOT 38, PLAN 23110
 DISTRICT LOT 4040 AND PART
 OF N.W. 1/4 DISTRICT LOT 4041
 CARIBOO DISTRICT—BRITISH COLUMBIA

SCALE: 1" = 100'

NOTE: Bearings are astronomic, derived from the northwesterly
 boundaries of Lots 8, 10 & 11, Plan 23110.

LEGEND: • OPP denotes an old pipe post found.
 • OIP denotes an old iron pin found.
 • IP denotes an iron pin set.



I, DONALD A. DUFFY of the City of Prince George,
 a British Columbia Land Surveyor, make oath and say
 that I was present at and did personally superintend
 the survey represented by this plan and that the survey
 and plan are correct. The said survey was completed
 on the 17 day of April, 1978.

[Signature]
 B.C.L.S.

Sworn before me this 24
 day of JULY, 1978

[Signature]
 A Commissioner for taking Affidavits
 for British Columbia.

MOUNT ALDER ESTATES LTD.

[Signature]
[Signature]

ROYAL BANK OF CANADA
 BY ITS LAWFUL ATTORNEYS

[Signature]
 Donald Robert Fisher

Approved under the Land Registry Act
 this 17th day of JULY, 1978

[Signature]
 Approving Officer, City of Prince George

This plan lies within the Fraser-Fort George
 Regional District.

W.D. USHER & ASSOCIATES
 LAND SURVEYORS
 PRINCE GEORGE — B.C.
 8280 D