

26-FF

343
2000

PLAN OF EASEMENT THROUGH
LOT 2, PLAN 11766
DISTRICT LOT 753
CARIBOO DISTRICT - BRITISH COLUMBIA

SCALE: 1" = 100'

NOTE: Bearings are astronomic, derived from the west boundary of Parcel A, Plan 18366 as shown on Plan 23159.

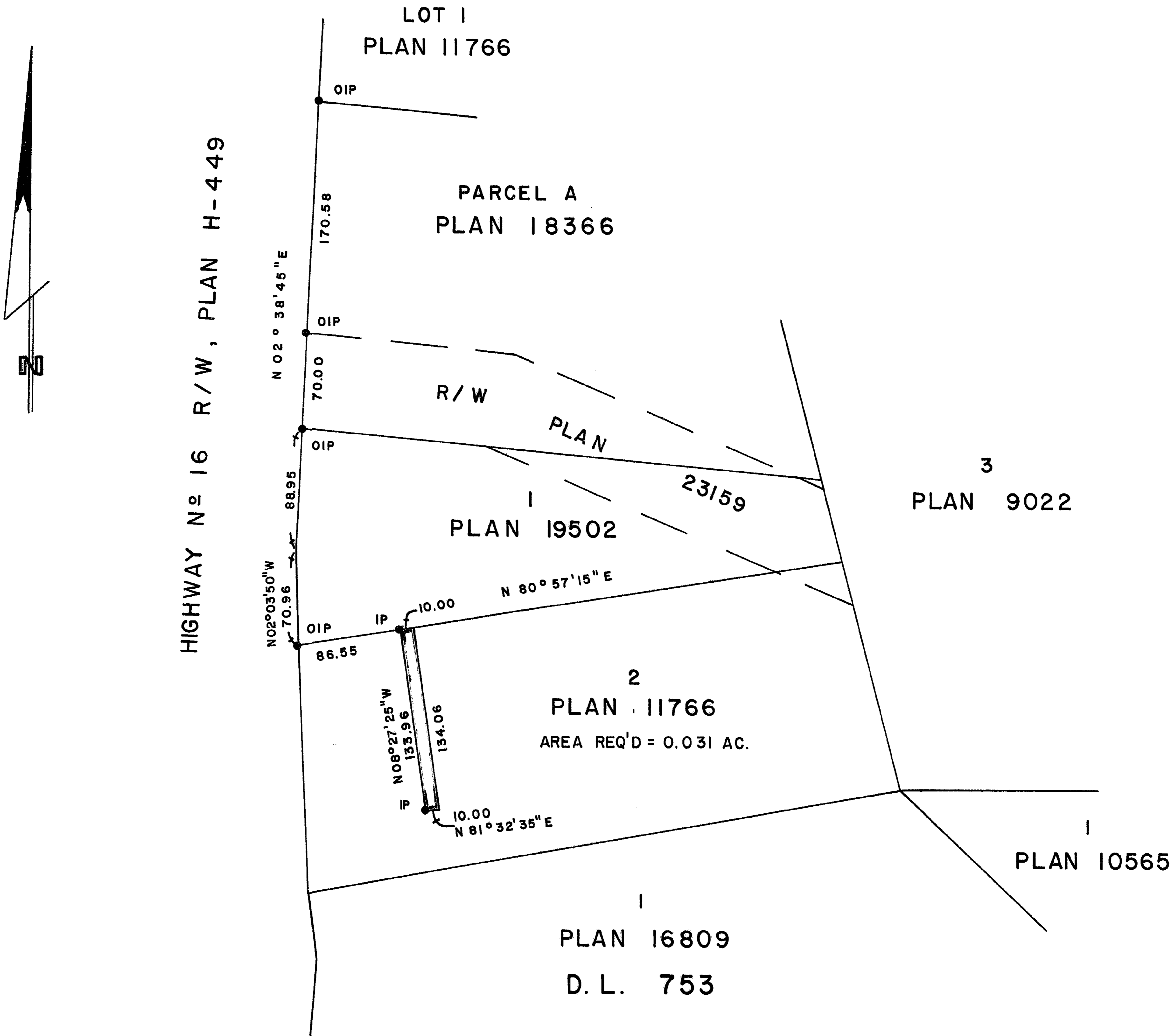
LEGEND: •OIP denotes an old iron pin found.
•IP denotes an iron pin set.

PLAN N^o 24142

Deposited in the Land Registry Office at Prince George, B.C. this 11 day of JULY, 1978.

E.T. SCHOOLEY
Registrar

per: LS



I, DONALD A. DUFFY of the City of Prince George, a British Columbia Land Surveyor, make oath and say that I was present at and did personally superintend the survey represented by this plan and that the survey and plan are correct. The said survey was completed on the 30 day of JUNE, 1978.

[Signature]
B.C.L.S.

Sworn before me this 7 day of JULY, 1978

[Signature]
A Commissioner for taking Affidavits for British Columbia.

This plan lies within the Fraser-Fort George Regional District.

W. D. USHER & ASSOCIATES
LAND SURVEYORS
PRINCE GEORGE - B.C.
KQ 56 10138