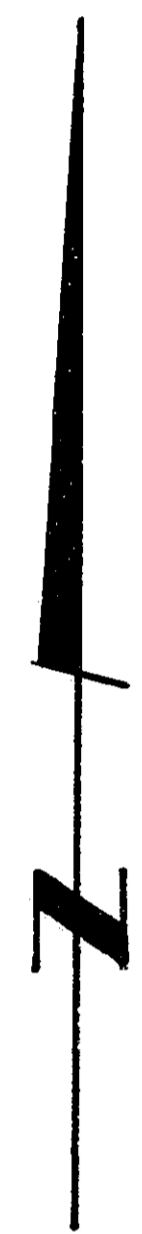


26-FF-226

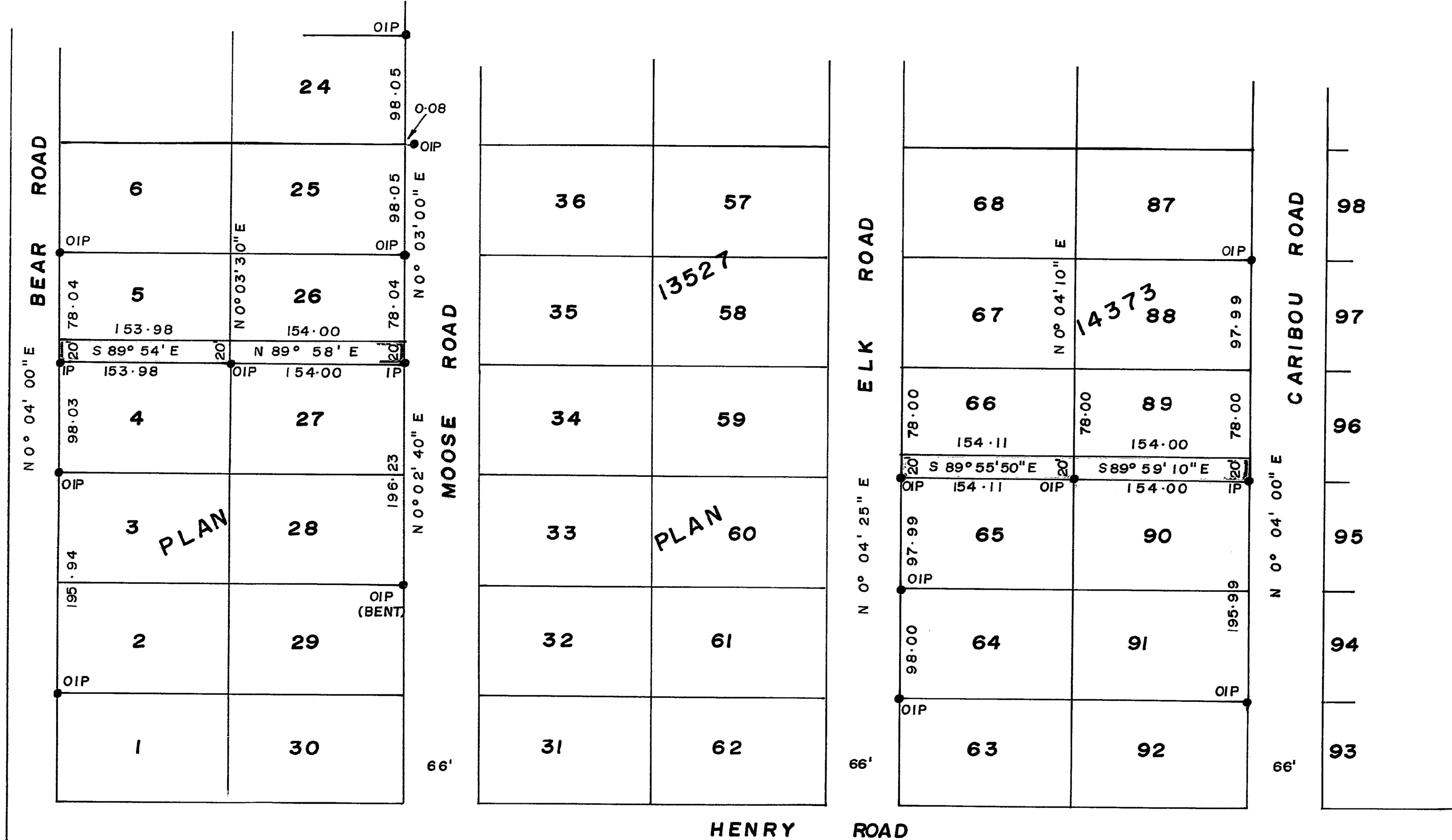
PLAN No. 24139
 DEPOSITED IN THE LAND REGISTRY
 OFFICE AT PRINCE GEORGE ON THE 12th
 DAY OF JULY 1978

G.T. SCHOOLE
 REGISTRAR

Per: G.T.



W. 1/2 OF N.W. 1/4
 D. L. 1599



S. W. 1/4
 D. L. 1599

BOOK OF REFERENCE

DESCRIPTION	AREA
LOT 5, PLAN 13527	3080 Sq. Ft.
LOT 26, PLAN 13527	3080 Sq. Ft.
LOT 66, PLAN 14373	3082 Sq. Ft.
LOT 89, PLAN 14373	3080 Sq. Ft.

CITY OF PRINCE GEORGE

**PLAN OF RIGHT OF WAY
 IN LOTS 5 & 26, PLAN 13527
 IN LOTS 66 & 89, PLAN 14373
 D. L. 1599, CARIBOO DISTRICT**

SCALE: 1" = 100'

BEARINGS ARE ASTRONOMIC DERIVED FROM PLANS
 13527 & 14373

● IP ——— STANDARD IRON POST
 O ——— DENOTING "OLD"

I, V. BARTELL OF THE CITY OF PRINCE GEORGE BRITISH
 COLUMBIA LAND SURVEYOR, MAKE OATH AND SAY THAT
 I WAS PRESENT AT AND DID PERSONALLY SUPERINTEND
 THE SURVEY REPRESENTED BY THIS PLAN AND THAT
 THE SURVEY AND PLAN ARE CORRECT. THE SAID
 SURVEY WAS COMPLETED ON THE 30th DAY OF JUNE
 1978.

V. Bartell
 V. BARTELL B.C.L.S.

SWORN BEFORE ME AT PRINCE GEORGE THIS 7th DAY OF
 July 1978.

[Signature]
 A COMMISSIONER FOR TAKING
 AFFIDAVITS FOR BRITISH COLUMBIA

THIS PLAN LIES WITHIN THE FRASER FORT GEORGE REGIONAL
 DISTRICT

McWILLIAM-WHYTE-GOBLE & ASSOCIATES
 B.C. LAND SURVEYORS
 PRINCE GEORGE-KAMLOOPS-SMITHERS
 REF. NO. 78089