

PLAN OF SUBDIVISION OF  
LOT 16, PLAN 16650  
DISTRICT LOT 4047  
CARIBOO DISTRICT - BRITISH COLUMBIA

SCALE: 1 : 1000

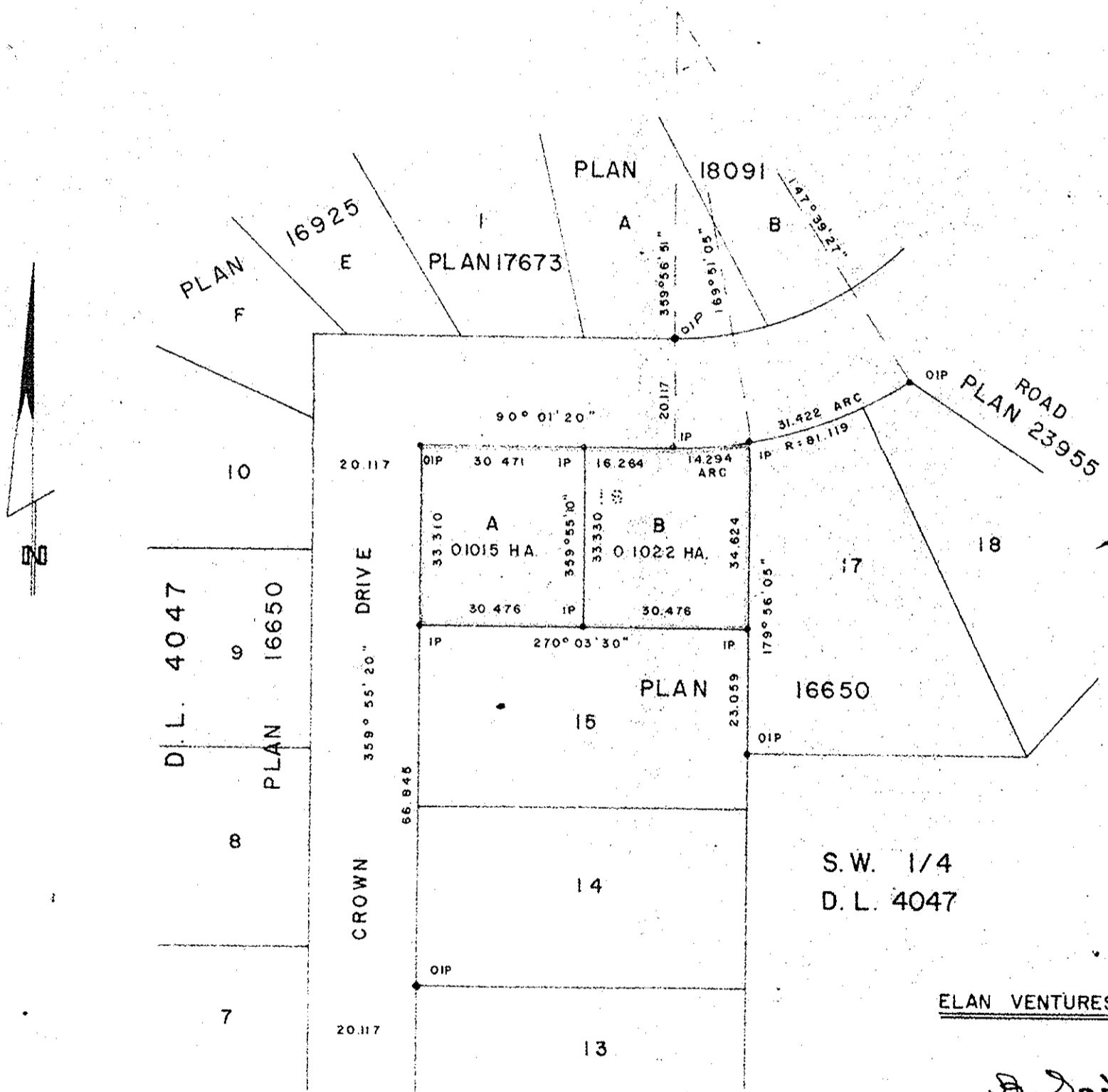
NOTE: Bearings are astronomic, derived from the west boundary of Lots 14, 15 & 16, Plan 16650.

LEGEND: • OIP denotes an old iron pin found.  
• IP denotes an iron pin set.

PLAN No 24042

Deposited in the Land Registry Office at Prince George, B.C. this 26 day of MAY, 1978.

E.T. SCHOOLEY  
Registrar



S.W. 1/4  
D.L. 4047

ELAN VENTURES LTD.

A. Dodder

I, DONALD A DUFFY of the City of Prince George, a British Columbia Land Surveyor, make oath and say that I was present at and did personally superintend the survey represented by this plan and that the survey and plan are correct. The said survey was completed on the 9 day of MAY, 1978.

[Signature]  
B.C.L.S.

Sworn before me this 15 day of MAY, 1978

G.M.L. ENTERPRISES LTD.

[Signature]

Approved under the Land Registry Act this 19th day of MAY, 1978

[Signature]  
Approving Officer, City of Prince George

This plan lies within the Fraser-Fort George Regional District.