

26-FF

PLAN of RIGHT-of-WAY IN  
LOT 1, PLAN 8833,  
D.L. 4040, CARIBOO DISTRICT.

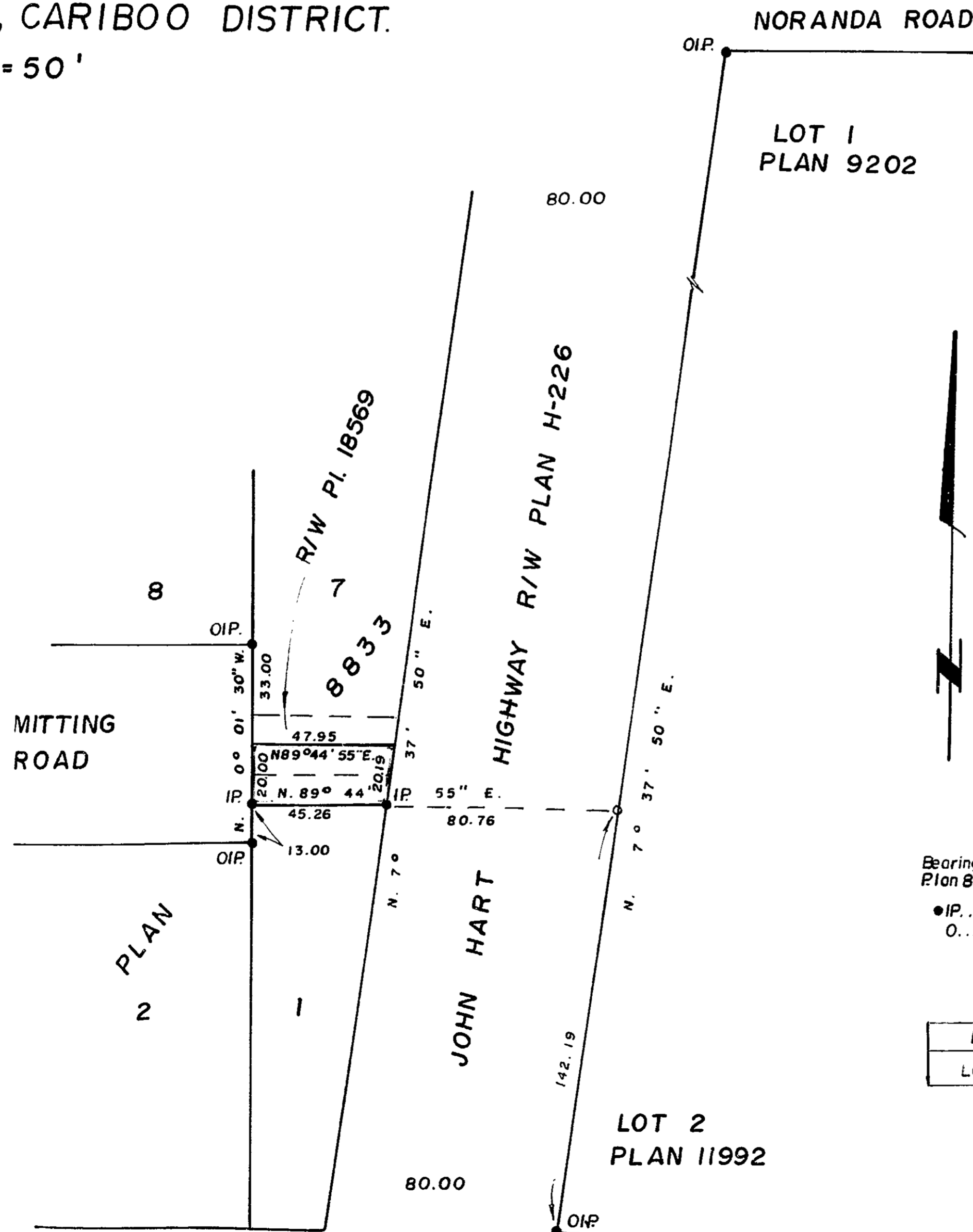
SCALE: 1" = 50'

PLAN NO.: **24013**

Deposited in the Land Registry Office  
at Prince George this 15 day of MAY 1978.

**E.T. SCHOOLEY**  
Registrar

per: *G.*



Bearings are astronomic derived from  
Plan 8833.

- IP.....Standard Iron Post.
- O.....Denotes "old"

BOOK of REFERENCE	
LOT 1, PLAN 8833,	0.02 Ac.

I, D. Keown of the City of Prince George  
British Columbia Land Surveyor make oath and  
say that I was present at and did personally  
superintend the survey represented by this plan  
and that the survey and plan are correct.  
The said survey was completed on  
the 15 day of May 1978.

*Dale S. Keown*  
B.C.L.S.

Sworn before me at Prince George  
this 15 day of May 1978.

A Commissioner for taking affidavits  
for British Columbia

McWILLIAM - WHYTE - GOBLE & ASSOCIATES  
B.C. LAND SURVEYORS  
PRINCE GEORGE - KAMLOOPS - SMITHERS

REF. NO.: **78041**

D. L. 4040

This plan lies within the Fraser-  
Fort George Regional District.