

26-FF

EXPLANATORY
PLAN OF EASEMENT THROUGH
REMAINDER LOT A, PLAN 17956
DISTRICT LOT 4047
CARIBOO DISTRICT - BRITISH COLUMBIA

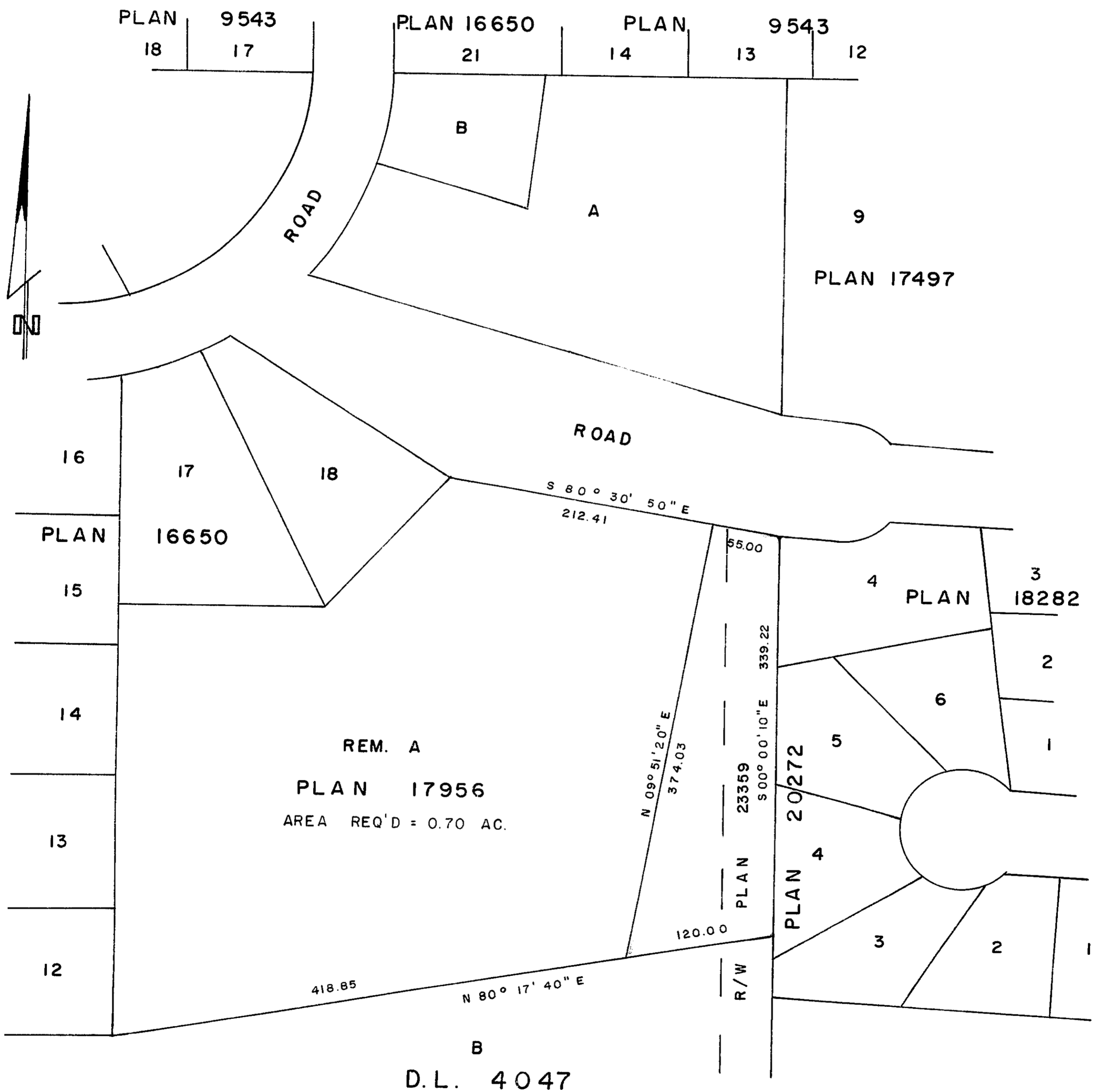
SCALE: 1" = 100'

NOTE: Bearings are astronomic, derived from the
east boundary of Lot A, Plan 17956.

PLAN No 23956

Deposited in the Land Registry
Office at Prince George, B.C. this
13 day of April, 1977.

"F.T. Schooley"
Registrar per. v.



CERTIFIED CORRECT
According to plans of record
in the Prince George Land
Registry Office.
This 20 day of Jan., 1977.

[Signature]
D. A. DUFFY, B.C.L.S.

This plan lies within the Fraser-Fort George
Regional District.