

26-FF

PLAN NO. 23953

Deposited in the Land Registry Office at Prince George this 12 day of April 1978.

E.T. SCHOOLEY

Registrar

per: G.

REFERENCE PLAN
of RIGHT-of-WAY of PART
of D.L. 4051, CARIBOO DISTRICT.

Scale: 1" = 100'

Bearings are astronomic derived from Plan 20138.

- IP... Standard Iron Post.
- ... Denotes "old"

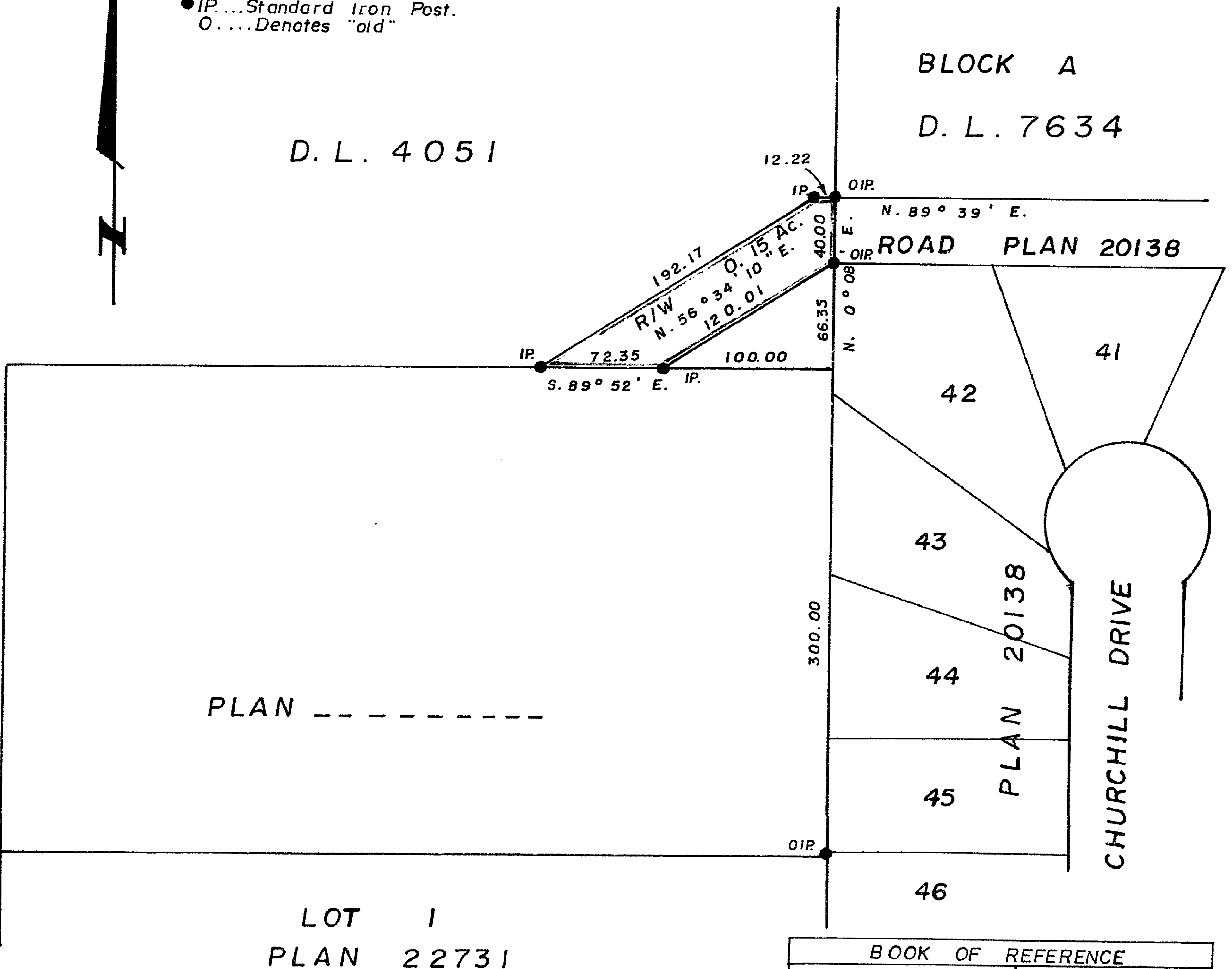


D. L. 4051

BLOCK A

D. L. 7634

ROAD PLAN 20138



PLAN -----

LOT 1
PLAN 22731

BOOK OF REFERENCE	
D.L. 4051	0.15 Ac.

I, V. Bartell, of the City of Prince George, British Columbia Land Surveyor make oath and say that I was present at and did personally superintend the survey represented by this plan and that the survey and plan are correct. The said survey was completed on the 22 day of July 1977.

V. Bartell
V. Bartell, B.C.L.S.

Sworn before me at Prince George, this 25 day of July 1977.

[Signature]
A Commissioner for taking affidavits for British Columbia.

THIS PLAN LIES WITHIN THE FRASER FORT GEORGE REGIONAL DISTRICT.

McWILLIAM, WHYTE GOBLE & ASSOC.,
B.C. LAND SURVEYORS.
PRINCE GEORGE-KAMLOOPS-SMITHERS

REF. NO. 77100-24 B.

D. L. 4051.