

PLAN OF SUBDIVISION OF PART OF
 PARCEL A, (PLAN 17198) PLAN 884
 DISTRICT LOT 745 AND PART OF
 DISTRICT LOT 485
 CARIBOO DISTRICT - BRITISH COLUMBIA

SCALE: 1" = 100'

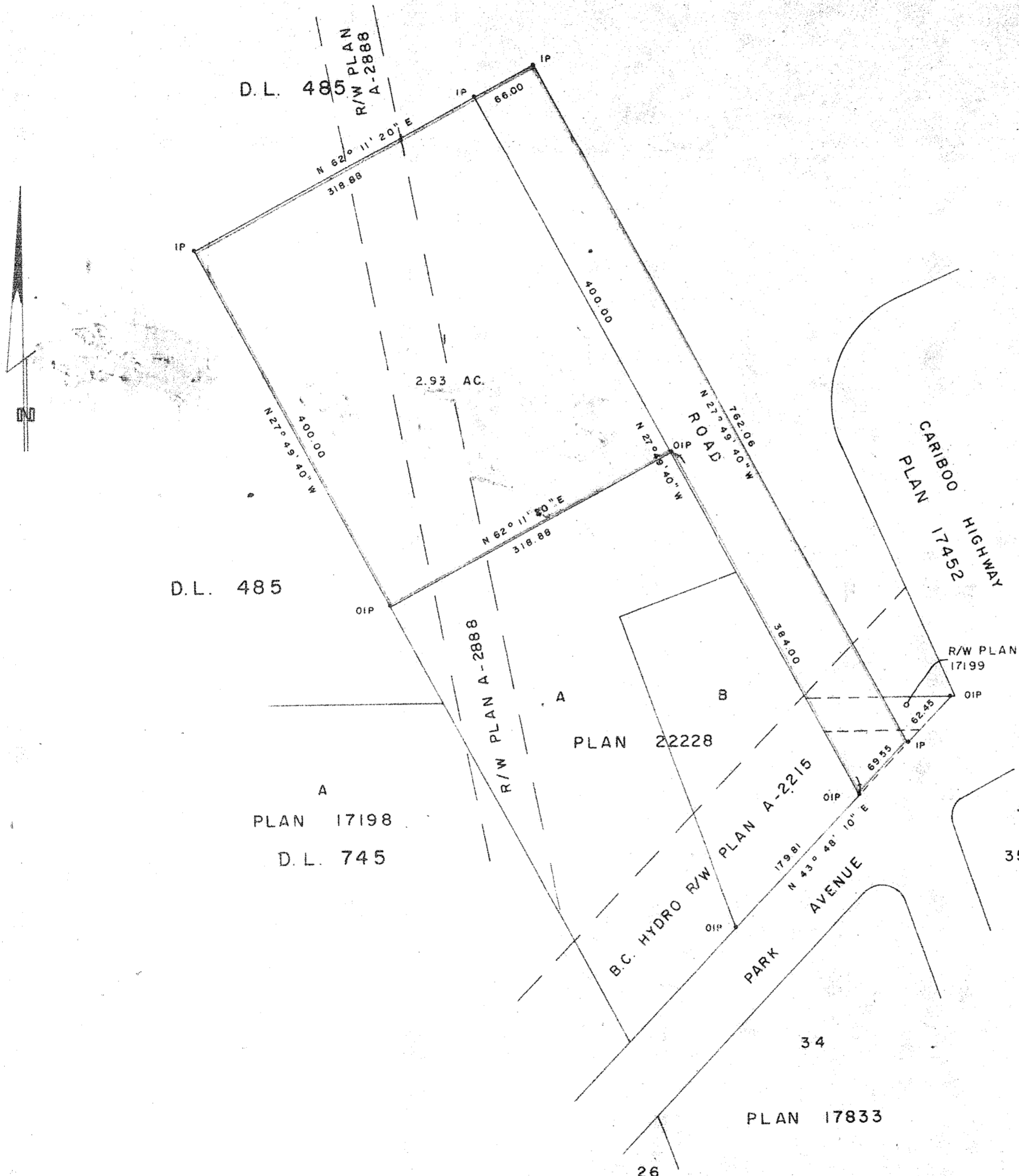
NOTE: Bearings are astronomic, derived from the
 north boundary of Lot A, Plan 22228.

LEGEND: • OIP denotes an old iron pin found.
 • IP denotes an iron pin set.

PLAN NO. **23945**

Deposited in the Land Registry
 Office of Prince George, B.C. this
 7th day of MAR, 1978.

C. T. SCHOOLEY
 Registrar



APPROVED AS TO DEDICATION OF ROADS
 B.C. HYDRO & POWER AUTHORITY

[Signature]
 DIRECTOR

[Signature]
 ASSOCIATE SECRETARY

I, DONALD A. DUFFY of the City of Prince George,
 a British Columbia Land Surveyor, make oath and say
 that I was present at and did personally superintend
 the survey represented by this plan and that the survey
 and plan are correct. The said survey was completed
 on the 19 day of August, 1977

[Signature]
 B.C.L.S.

Sworn before me this 1
 day of Nov, 1977

A Commissioner for Taking Affidavits
 for British Columbia.

BRITISH COLUMBIA RAILWAY COMPANY

[Signature]
 Vice-President

[Signature]
 Director

Approved under the Land Registry Act
 this 7th day of MAR, 1978

[Signature]
 Approving Officer, City of Prince George

This plan lies within the Fraser-Fort George
 Regional District.

W. D. USHER & ASSOCIATES
 LAND SURVEYORS
 PRINCE GEORGE - B.C.
 KA 2 9358