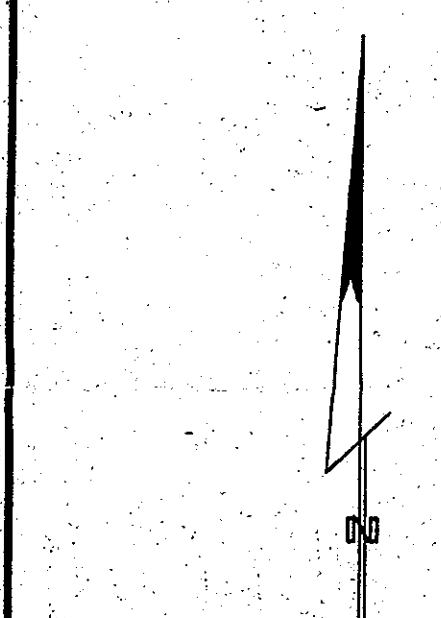
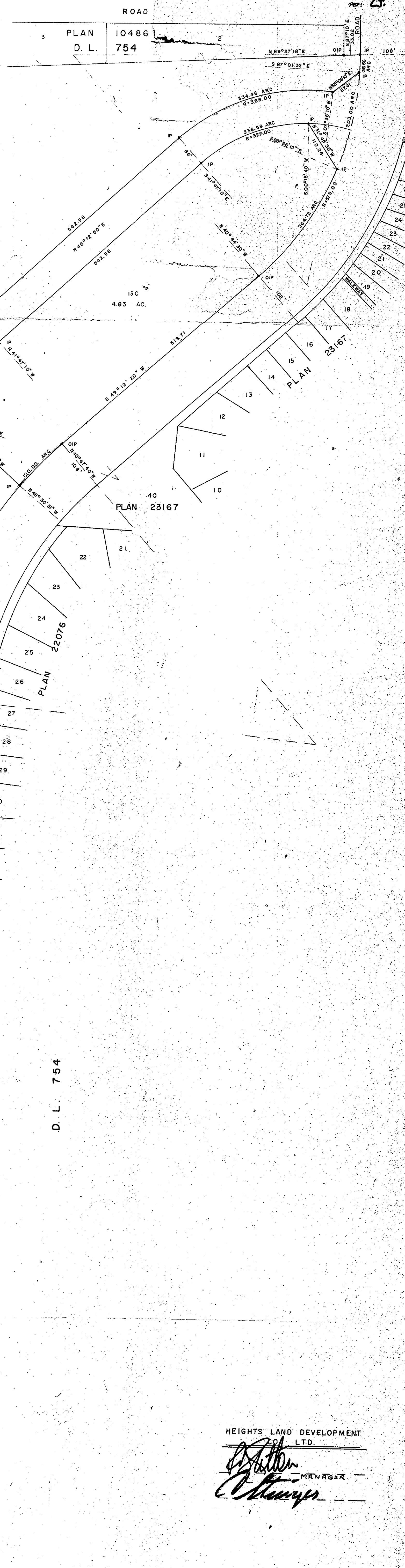


PLAN OF SUBDIVISION OF PARTS OF LOT 1, PLAN 23717 DISTRICT LOTS 1605 & 2013 AND S.W. 1/4 DISTRICT LOT 754 CARIBOO DISTRICT - BRITISH COLUMBIA

SCALE: 1" = 100'

NOTE: Bearings are astronomic, derived from the south boundary of S.W. 1/4 D.L. 754 as shown on Plan 23717.

LEGEND: •OPP denotes an old pipe post found. •OIP denotes an old iron pin found. •IP denotes an iron pin set. WT denotes witness.



P.C.A.
Lots 88 & 89 non Pol. B (024792)
Lots 92 & 93 non Pol. A (024791)
Lots 96 & 97 non Pol. C (024793)
Lots 100 & 101 non Pol. D (024794)
Lots 105 & 106 non Pol. E (024795)
Lots 110 & 111 non Pol. F (024796)
Lots 114 & 115 non Pol. G (024797)
Lots 119 & 120 non Pol. H (024798)

S.E. 1/4 D.L. 1605
PLAN 23717
D.L. 1605

PLAN 23717
D.L. 2013

D.L. 754

HEIGHTS LAND DEVELOPMENT LTD.
Donald A. Duffy
MRW RGR

I, DONALD A. DUFFY of the City of Prince George, a British Columbia Land Surveyor, make oath and say that I was present at and did personally superintend the survey represented by this plan and that the survey and plan are correct. The said survey was completed on the 19th day of December, 1977.

Approved under the Land Registry Act this 31st day of JAN, 1978

ecob
Approving Officer, City of Prince George

Sworn before me this 11th day of January, 1978

W.D. Usher
A Commissioner for taking Affidavits for British Columbia.

This plan lies within the Fraser-Fort George Regional District.