

26-FF-226

PLAN OF SUBDIVISION OF PART OF
N.E. 1/4 DISTRICT LOT 750
CARIBOO DISTRICT - BRITISH COLUMBIA

SCALE: 1" = 100'

NOTE: Bearings are astronomic, derived from the southwesterly
boundary of Cariboo Highway as shown on Plan 20076.

LEGEND: *OIP denotes an old iron pin found.
*IP denotes an iron pin set.

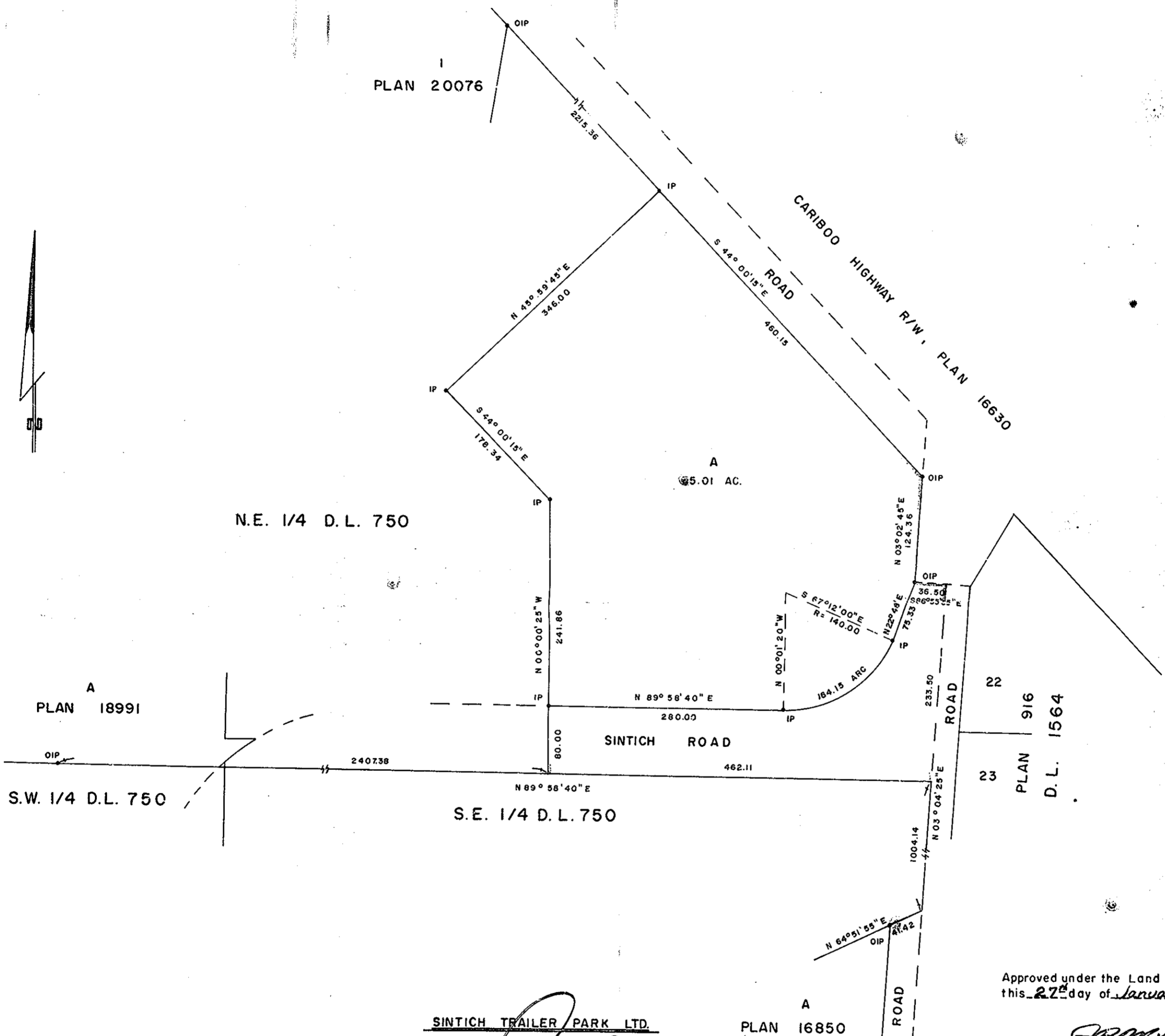
PLAN No 23849

Deposited in the Land Registry
Office at Prince George, B.C. this
13th day of February, 1978.

E. T. SCHOOLEY,
Registrar

per: G.S.

clearance L.C.A. see N 4052



I, DONALD A. DUFFY of the City of Prince George,
a British Columbia Land Surveyor, make oath and say
that I was present at and did personally superintend
the survey represented by this plan and that the survey
and plan are correct. The said survey was completed
on the 25th day of NOV. 1977.

[Signature]
B.C.L.S.

Sworn before me this 5th
day of DEC., 1977

[Signature]
A. Commissioner for Taking Affidavits
for British Columbia.

SINTICH TRAILER PARK LTD.

[Signature]
PRESIDENT

PLAN 16850

Approved under the Land Registry Act
this 22nd day of January, 1978

[Signature]
Approving Officer, Ministry of Highways
and Public Works.

Approved under the Land Registry Act
this 10th day of JAN., 1978

[Signature]
Approving Officer, City of Prince George

This plan lies within the Fraser-Fort George
Regional District.

W. D. USHER & ASSOCIATES
LAND SURVEYORS
PRINCE GEORGE - B.C.
JL 61,72-73 9628