

PLOTTED (G.U.)

PLAN OF SUBDIVISION OF PART OF LOT 48, PLAN 20605 DISTRICT LOT 4048 CARIBOO DISTRICT-BRITISH COLUMBIA

PLAN No 23818

SCALE: 1" = 100'

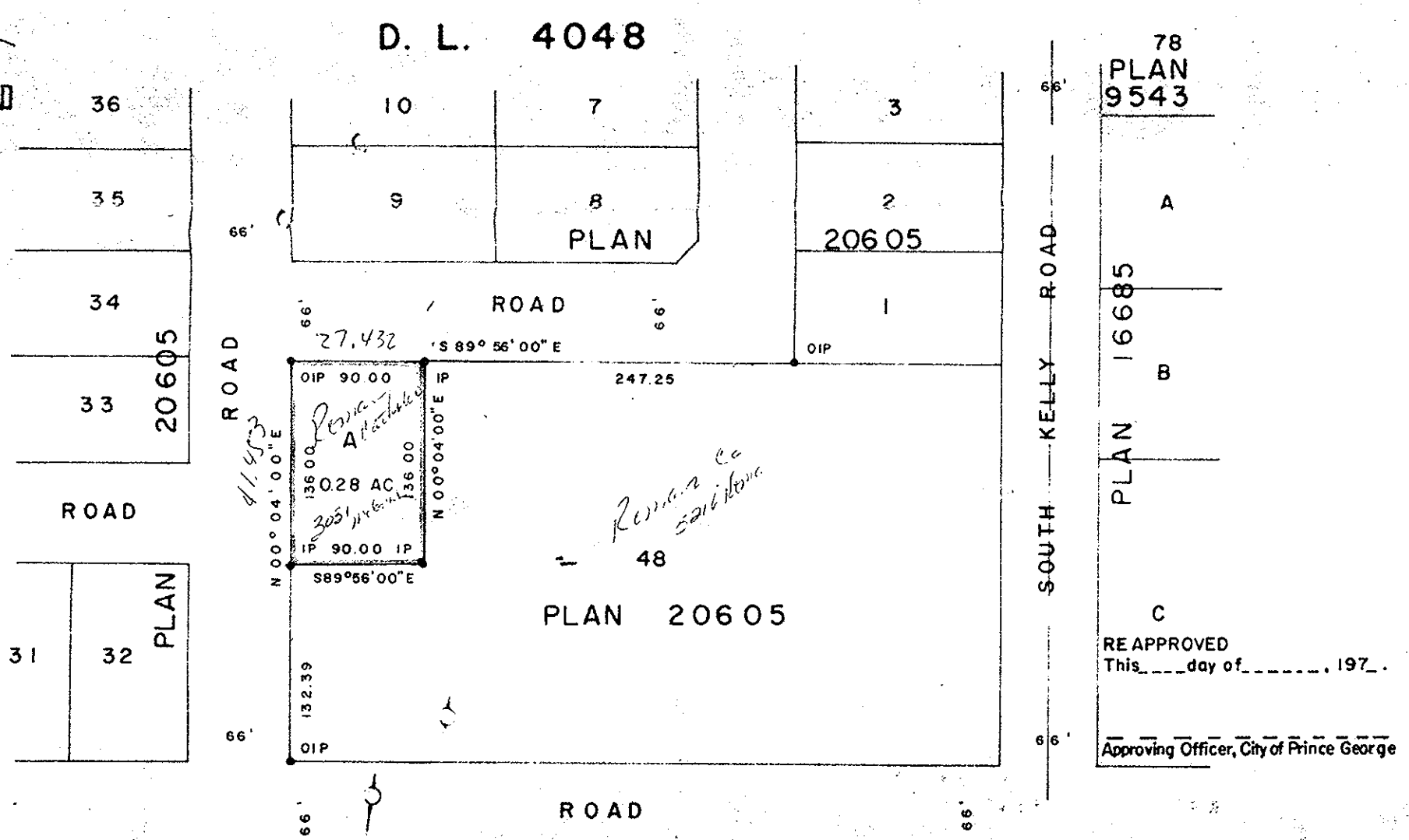
Deposited in the Land Registry Office at Prince George, B.C. this 30. day of JANUARY, 1978.

NOTE: Bearings are astronomic, derived from the north boundary of Lot 48, Plan 20605.

E.T. SCHOOLEY Registrar

LEGEND: • OIP denotes an old iron pin found. • IP denotes an iron pin set.

Handwritten calculations: 3048, 274320, 136, 18288, 9144, 3048, 114528



78 PLAN 9543, A, PLAN 16685, B, PLAN 16685, C, RE APPROVED This... day of... 197... Approving Officer, City of Prince George

A PLAN 16896, E. 1/2 OF S.E. 1/4 D.L. 4048, 26 PLAN 9543, D.L. 4048

I, DONALD A. DUFFY of the City of Prince George, a British Columbia Land Surveyor, make oath and say that I was present at and did personally superintend the survey represented by this plan and that the survey and plan are correct. The said survey was completed on the 3 day of SEPT, 1975

ROMAN CATHOLIC EPISCOPAL CORPORATION OF PRINCE RUPERT

Approved, under the Land Registry Act this 15th day of DEC, 1975

Signature of Donald A. Duffy, B.C.L.S.

Signature of J.C. Grady

Signature of E.T. Schooley, Approving Officer, City of Prince George, Reapproved May 4, 1977

Sworn before me this 15 day of DEC, 1975

GLENVIEW ESTATES LTD.

This plan lies within the Fraser-Fort George Regional District.

A. Commissioner for taking Affidavits for British Columbia.

President

Reapproved Dec. 30/77, Signature of E.T. Schooley

W. D. USHER & ASSOCIATES LAND SURVEYORS PRINCE GEORGE - B.C. HK 46 7379