

PLAN OF SUBDIVISION OF  
 LOT 10 & 11, PLAN 22603  
 DISTRICT LOT 753  
 CARIBOO DISTRICT - BRITISH COLUMBIA

SCALE: 1" = 50'

NOTE: Bearings are astronomic, derived from the westerly boundary of Lot 11, Plan 22603.

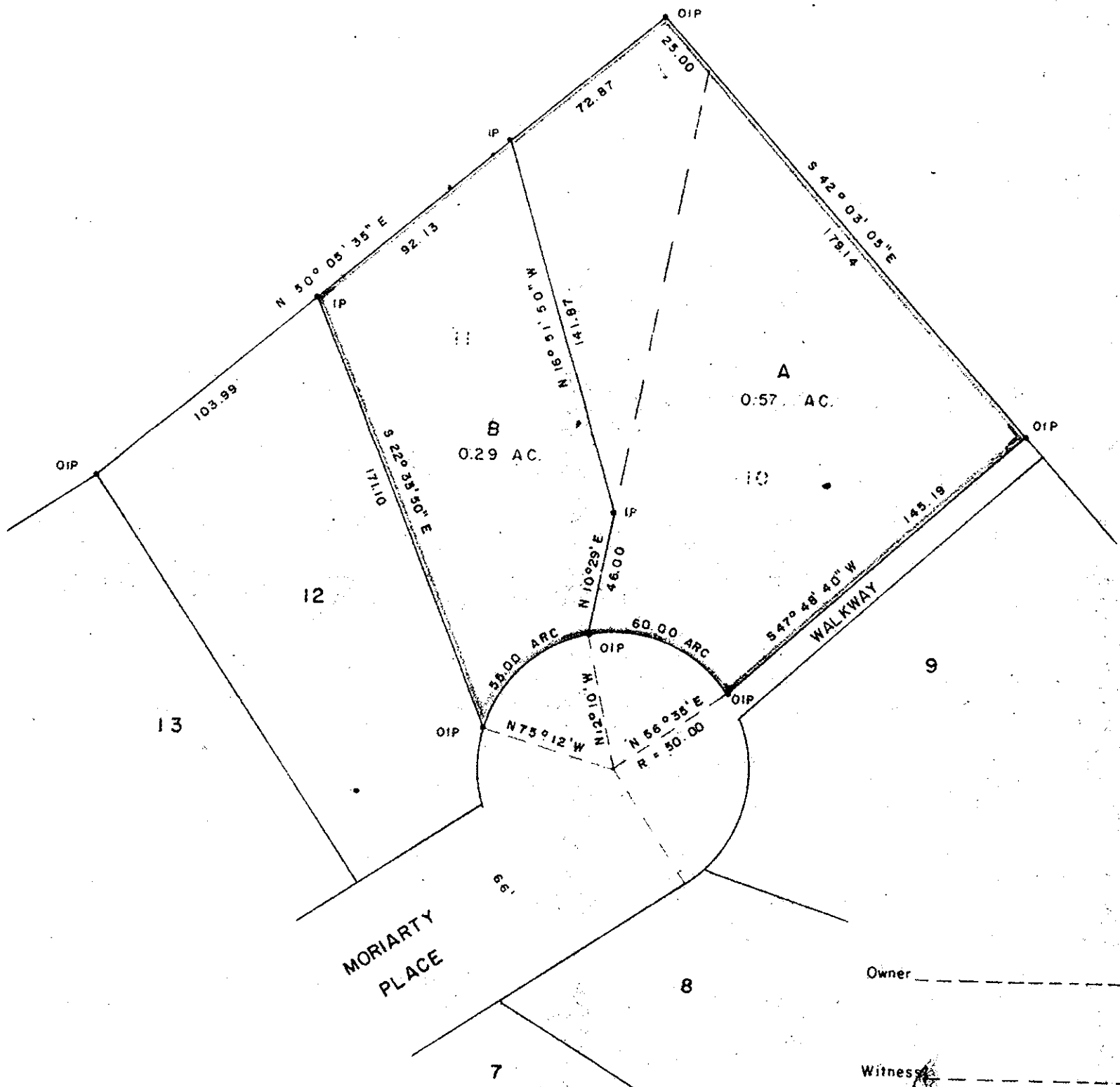
LEGEND: •OIP denotes an old iron pin found.  
 •IP denotes an iron pin set.

PLAN No 23808

Deposited in the Land Registry  
 Office at Prince George, B.C. this  
 24 day of JANUARY, 1978.

C.T. SCHOOLEY  
 Registrar

B - PLAN 20275  
 D.L. 753



PLAN 22603 - D. L. 753

I, DONALD A. DUFFY of the City of Prince George, a British Columbia Land Surveyor, make oath and say that I was present at and did personally superintend the survey represented by this plan and that the survey and plan are correct. The said survey was completed on the 16 day of NOV, 1977

*[Signature]*  
 B.C.L.S.

Sworn before me this 14 day of DEC, 1977

A Commissioner for taking Affidavits for British Columbia

EMPRESS HOMES LTD.

*[Signature]*

PRESIDENT

Approved under the Land Registry Act this 9th day of DEC, 1977

*[Signature]*  
 Approving Officer, City of Prince George

This plan lies within the Fraser-Fort George Regional District.

W. D. USHER & ASSOCIATES  
 LAND SURVEYORS  
 PRINCE GEORGE - B.C.  
 KS 24 9573