

PLOTTED (NK)

PLAN OF SUBDIVISION OF PART OF
LOT 1, PLAN 1243
DISTRICT LOT 632
CARIBOO DISTRICT - BRITISH COLUMBIA

SCALE: 1" = 100'

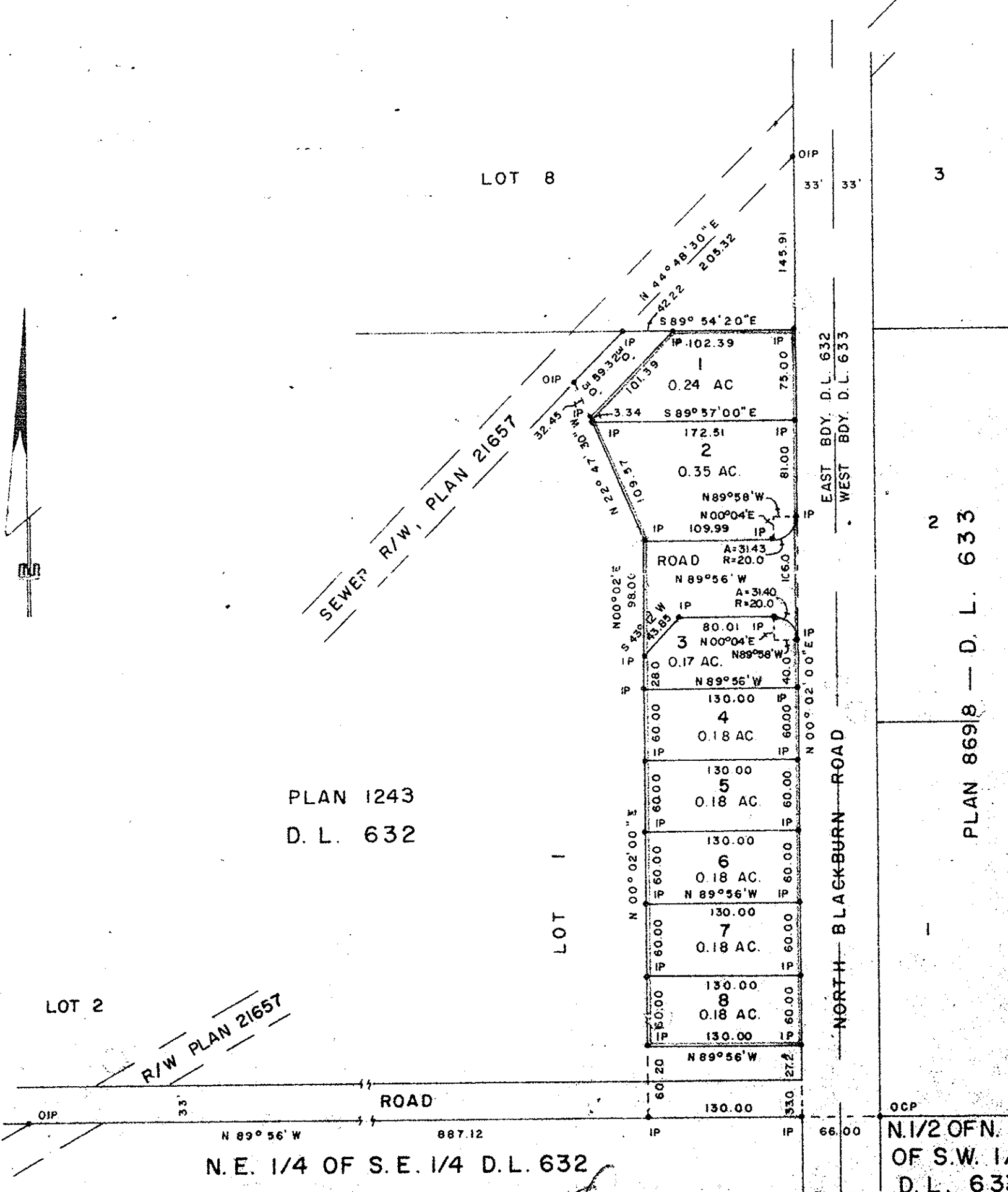
PLAN N^o 23807

NOTE: Bearings are astronomic, derived from the east boundary of D. L. 632 as shown on Plan 21657.

Deposited in the Land Registry Office at Prince George, B. C. this 25. day of JANUARY, 1978.

LEGEND: •OCP denotes an old capped iron pin found.
•OIP denotes an old iron pin found.
•IP denotes an iron pin set.

E. T. SCHOOLEY
Registrar



LOT 2

R/W PLAN 21657

PLAN 1243
D. L. 632

LOT 1

PLAN 86918 - D. L. 633

N.E. 1/4 OF S.E. 1/4 D.L. 632

N. 1/2 OF N. 1/2
OF S.W. 1/4
D. L. 633

I, DONALD A. DUFFY of the City of Prince George, a British Columbia Land Surveyor, make oath and say that I was present at and did personally superintend the survey represented by this plan and that the survey and plan are correct. The said survey was completed on the 6th day of DEC. 1977

MIDWEST REALTY LTD.

[Signature]
(PRESIDENT)

Approved under the Land Registry Act this 23 day of JAN, 1978

[Signature]
Approving Officer, City of Prince George

Sworn before me this 24 day of JAN, 1978
B.C.L.S.

VICTORIA MORTGAGE CORPORATION LTD.

[Signature]
DIRECTOR

This plan lies within the Fraser-Fort George Regional District.

[Signature]
Commissioner for taking Affidavits for British Columbia.

W. D. USHER & ASSOCIATES
LAND SURVEYORS
PRINCE GEORGE - B. C.
K.U. 27 8875