

PLOTTED NJ

PLAN No 23776

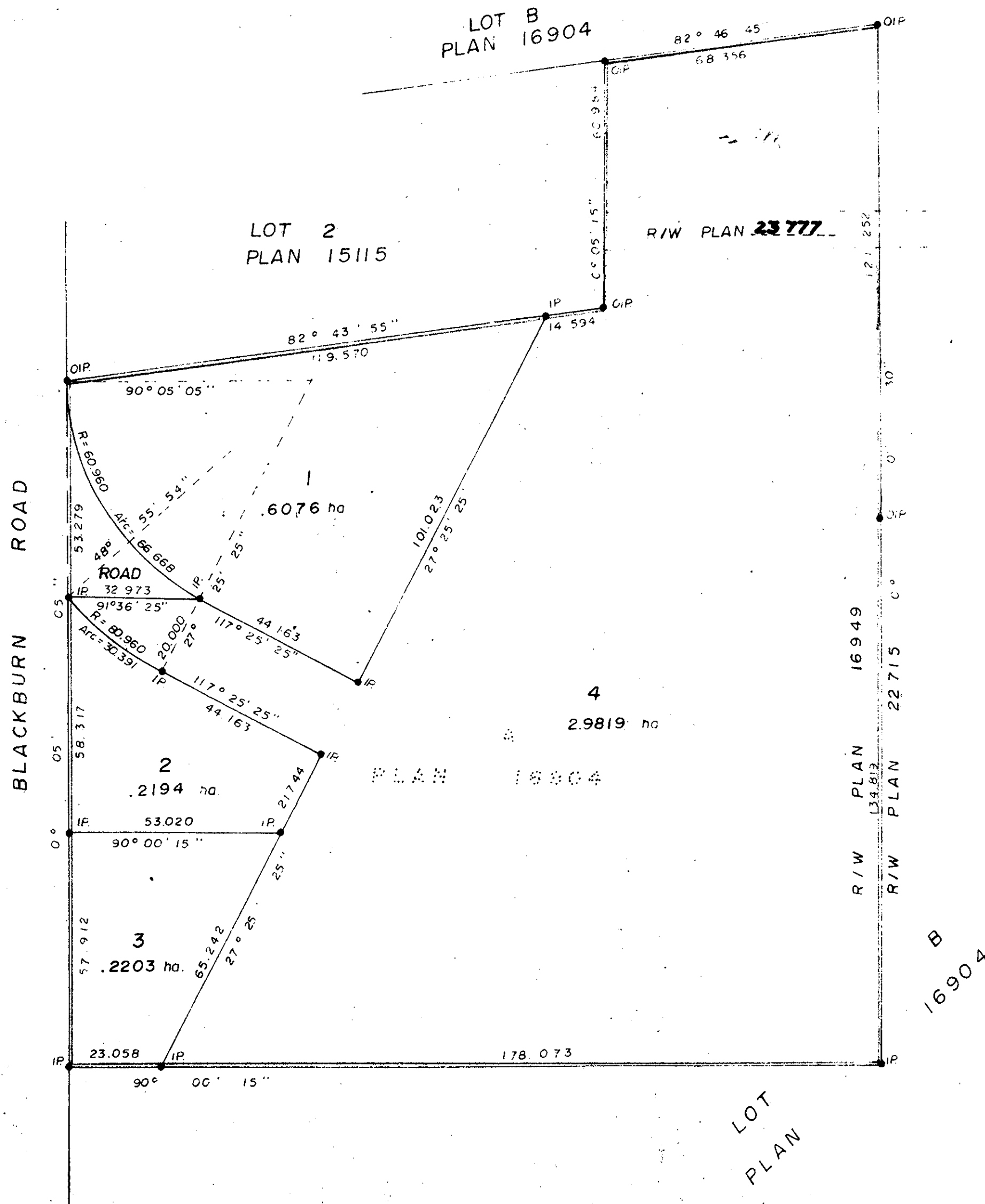
Deposited in the Land Registry Office at Prince George on the 10. day of JANUARY, 1977.

E.T. SCHOOLEY Registrar

PLAN OF SUBDIVISION OF LOT A, PLAN 16904, D.L. 1544, CARIBOO DISTRICT.

Scale: 1:100

ALL DISTANCES ARE IN METRES.



Bearings are astronomic and are derived from Plan 16904

- P.con. Standard Concrete Post.
- P.Rock Standard Rock Post.
- PP Standard Pipe Post.
- IP Standard Iron Post.
- P Wooden Post.
- L.P Lead Plug.
- Denoting "Old"
- WT Denoting "Witness"
- CIP Capped Iron Post

Approved under the Land Registry Act on the 30th day of DEC. 1977

Approving Officer City of Prince George

This plan lies within the Fraser Regional District

I, Dale Kraew... of the City of Prince George... British Columbia Land Surveyor, make oath and say that I was present at and did personally superintend the survey represented by this plan and that the survey and plan are correct. The said survey was completed on the 12th day of December, 1977.

Sworn before me at Prince George, B.C. this 13th day of December, 1977.

Commissioner for taking of Oaths for British Columbia

Owner: E. J. ... Witness: Jackie ...

McWilliam-Whyte-Gable & Associates B.C. LAND SURVEYORS PRINCE GEORGE | SMITHERS | KAMLOOPS

REF No 77100-51

D.L. 1544

City of Prince George

City of Prince George