

PLAN OF SUBDIVISION OF PART OF

LOT 2, PLAN 23714

DISTRICT LOT 753  
CARIBOO DISTRICT-BRITISH COLUMBIA

SCALE: 1" = 100'

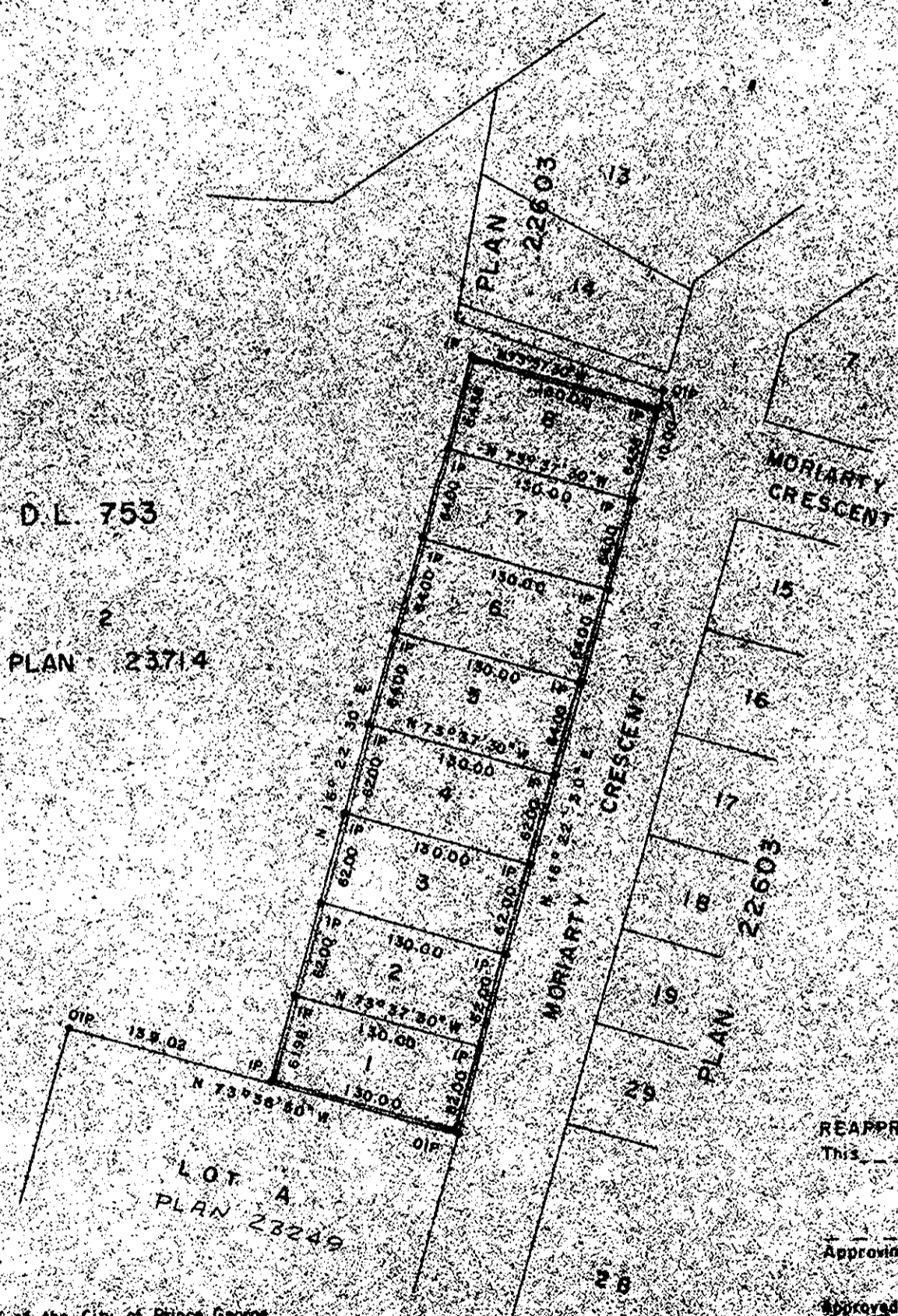
SCALE: Bearings are astronomic, derived from the west boundary of Moriarty Crescent, Plan 22603

LEGEND: \*OIP denotes an old iron pin found.  
\*IP denotes an iron pin set.

PLAN NO. 23765

Deposited in the Land Registry Office of Prince George, B.C. this 3 day of JANUARY, 1973

C. T. SCHOOLEY  
Registrar



I, DONALD A. DUFFY of the City of Prince George, a British Columbia Land Surveyor, make oath and say that I was present at and did personally supervise the survey represented by this plan and that the survey and plan are correct. The said survey was completed on the 17 day of MAY, 1972.

Sworn before me this 20 day of MAY, 1972  
A Commissioner for Taking Affidavits for British Columbia

HEIGHTS LAND DEVELOPMENT CO. LTD.

*[Handwritten signature]*

REAPPROVED  
This \_\_\_ day of \_\_\_ 19\_\_

Approving Officer, City of Prince George

Approved under the Land Registry Act  
this 20 day of MAY, 1972

*[Handwritten signature]*  
Approving Officer, City of Prince George  
Reapproved Oct 3, 1971

This plan lies within the Prince George Regional District