

(NK)

PLAN 9243

PLAN 9698

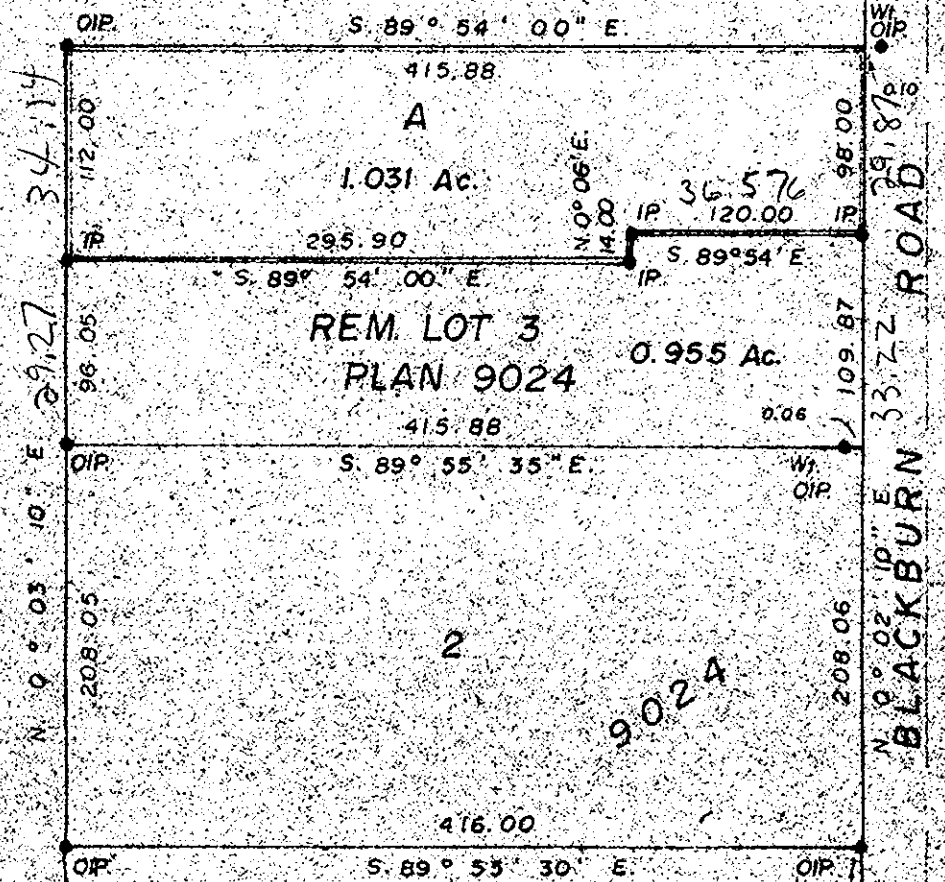
PLAN No 23742

Deposited in the Land Registry Office at Prince George, on the 14th day of DECEMBER 1977.

E.T. SCHOOLEY, Registrar



NE 1/4 of S.E. 1/4 D.L. 632



PLAN of SUBDIVISION of  
 PART of LOT 3, PLAN 9024,  
 DISTRICT LOT 632,  
 CARIBOO DISTRICT.  
 Scale 1" = 100'

REM. S.E. 1/4 of S.E. 1/4 D.L. 632

12 PLAN 8342

6 PLAN 8342

R/W Plan 22632

GISCOME ROAD

D.L. 1543

D.L. 1544

- Bearings are astronomic and are derived from S. 89° 55' 30" E.
- PCpn ..... Standard Concrete Post.
  - PRck ..... Standard Rock Post.
  - PP ..... Standard Pipe Post.
  - LP ..... Standard Iron Post.
  - P ..... Wooden Post.
  - L.P. .... Lead Plug.
  - O ..... Dangling "Old".
  - WT ..... Dangling "Witness".
  - CIP ..... Capped Iron Post.

I, V. Bacall, of the City of Prince George, British Columbia, Land Surveyor, make oath and say that I was present at and did personally superintend the survey represented by this plan and that the survey and plan are correct.

The said survey was completed on the 18th day of August, 1977.

*V. Bacall*

Sworn before me at Prince George, B.C. this 18th day of August, 1977.

Approved under the Land Registry Act on the 18th day of 1977.

*Erdly*

Approving Officer  
 City of Prince George

A Commissioner for taking affidavits for British Columbia.

Owner *Barbara Chantland*

Witness *Judith Parsons*

This plan fits within the E.A.S.S. Ed. 54749 Regional District.

McWilliam - White - Goss & Associates  
 B.C. LAND SURVEYORS  
 PRINCE GEORGE | SMITHERS | KAMLOOPS

REF No: 77-100-33

D.L. 632

City of Prince George

City of Prince George