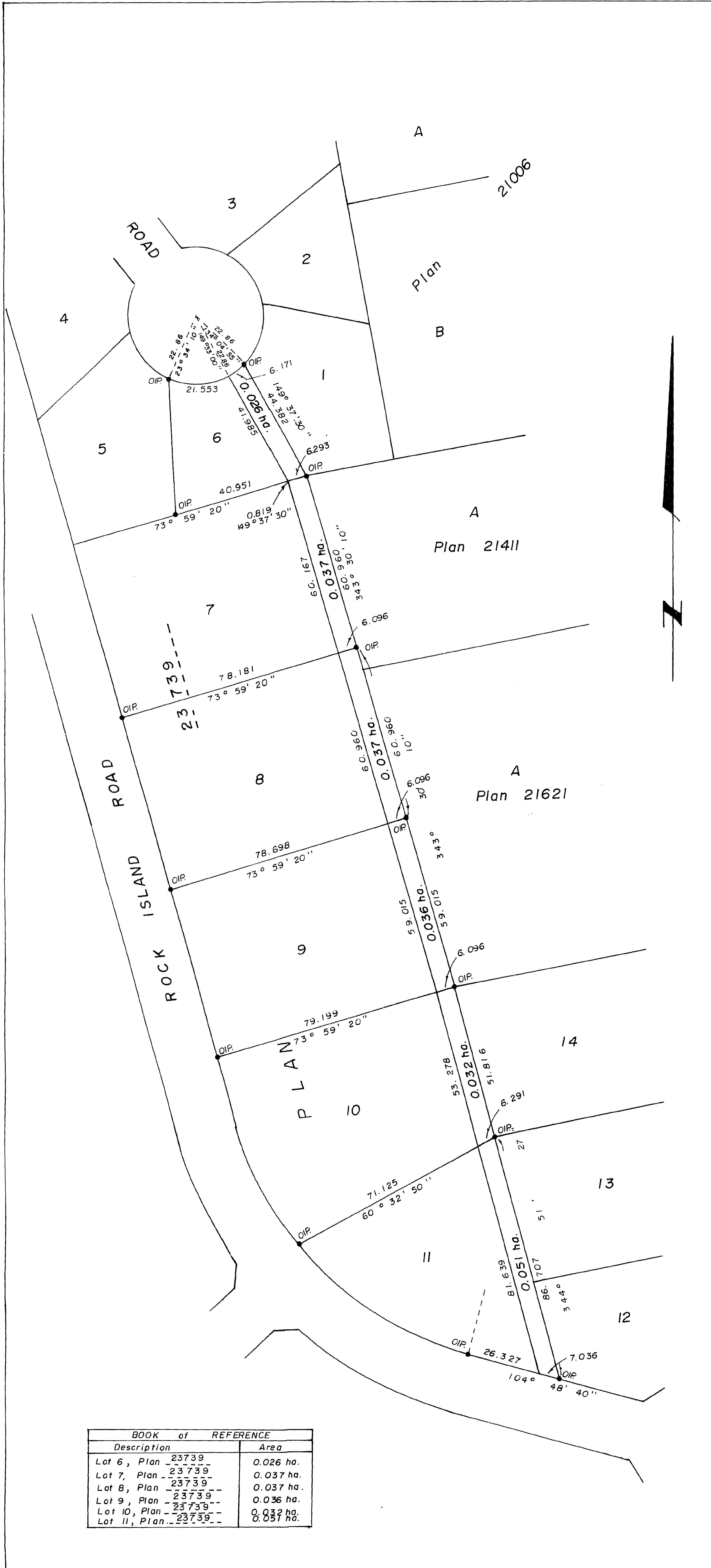


PLAN NO. **23741**  
 Deposited in the Land Registry Office at  
 Prince George this 14 day of ~~October~~ **October**, 1977.

**E. T. SCHOOLEY**  
 Registrar  
 per: **CT**



BOOK of REFERENCE	
Description	Area
Lot 6, Plan -23739-	0.026 ha.
Lot 7, Plan -23739-	0.037 ha.
Lot 8, Plan -23739-	0.037 ha.
Lot 9, Plan -23739-	0.036 ha.
Lot 10, Plan -23739-	0.032 ha.
Lot 11, Plan -23739-	0.031 ha.

CITY OF PRINCE GEORGE, B.C.

PLAN OF RIGHT-OF-WAY  
 IN LOTS 6 to 11 INCLUSIVE,  
 PLAN 23739, D. L. 751,  
 CARIBOO DISTRICT.

Scale : 1 : 1000

Distances in metres and decimals thereof.

Bearings are astronomic derived from  
 Plan 21621.

●IP... Standard Iron Post.  
 O..... Denotes "old"

I, V. Bartell, of the City of Prince George,  
 British Columbia Land Surveyor, make oath  
 and say that I was present at and did  
 personally superintend the survey represented  
 by this plan and that the survey and plan  
 are correct. The said survey was completed  
 on the 26 day of September 1977.

*V. Bartell*  
 V. Bartell, B.C.L.S.

Sworn before me at Prince George, B.C.  
 this 2 day of October 1977.

*[Signature]*  
 A Commissioner for taking affidavits  
 for British Columbia.

This plan lies within the Fraser Fort-  
 George Regional District.

McWilliam, Whyte, Gable, & Associates,  
 B.C. Land Surveyors  
 Prince George - Kamloops - Smithers.

REF. NO. 77100 - 34A

D. L. 751.