

JC, KB

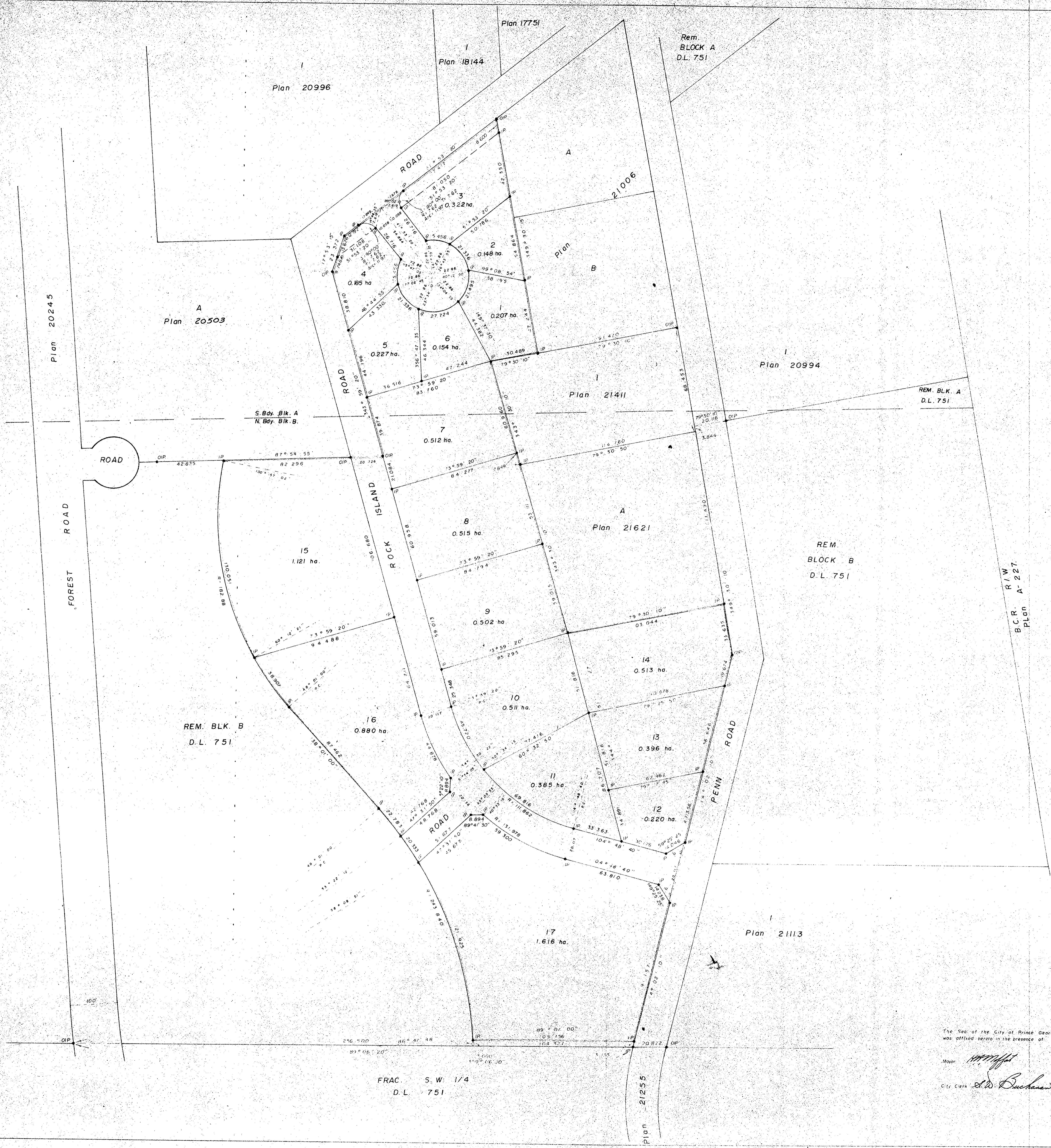
PLAN NO. 23739
Deposited in the Land Registry Office at
Prince George this 14th day of October 1977.

E.T. SCHOOLEY
Registrar

PLAN OF SUBDIVISION OF
PARTS OF BLOCKS A AND B,
DISTRICT LOT 751,
CARIBOO DISTRICT.

Scale 1:1000
DISTANCES IN METERS AND DECIMALS THEREOF.
AREA WITHIN RED OUTLINE = 11.515 ha.

BCR. R/W A-227
PLAN



FRAC. S.W. 1/4
D.L. 751

REM. BLOCK B
D.L. 751

The Seal of the City of Prince George
was affixed hereto in the presence of

Mayor *[Signature]*
City Clerk *[Signature]*

Bearings are astronomic derived from
Plan 21621.
● IP - Standard Iron Post
● CP - Standard Pipe Post
● CP - Copied Iron Post
● CP - Standard Post in Concrete
○ - Benchmarks
W - Denotes witness

Approved under the Land Registry Act
this 18th day of OCT 1977.

[Signature]
Approving Officer
City of Prince George

I, V. Barlett, of the City of Prince George,
British Columbia Land Surveyor make oath
and say that I was present at and did
personally supervise the survey represented
by this plan and that the survey and plan
are correct. The said survey was completed
on the 26th day of September 1977.

[Signature]
V. Barlett, B.C.L.S.

Sworn before me at Prince George, B.C.
this 14th day of October 1977.

[Signature]
A Commissioner for taking affidavits for
British Columbia.

This plan lies within the Fraser Port
- George Regional District.

McWilson, Whyte, Goble, & Associates,
B.C. Land Surveyors
Prince George - Kamloops - Smithers
REF. NO. 77100-34