

PLAN OF SUBDIVISION OF PARTS OF S.E. 1/4 OF
DISTRICT LOT 1605-B
LOT 7, PLAN 9902
DISTRICT LOT 2013
CARIBOO DISTRICT - BRITISH COLUMBIA

SCALE: 1" = 200'

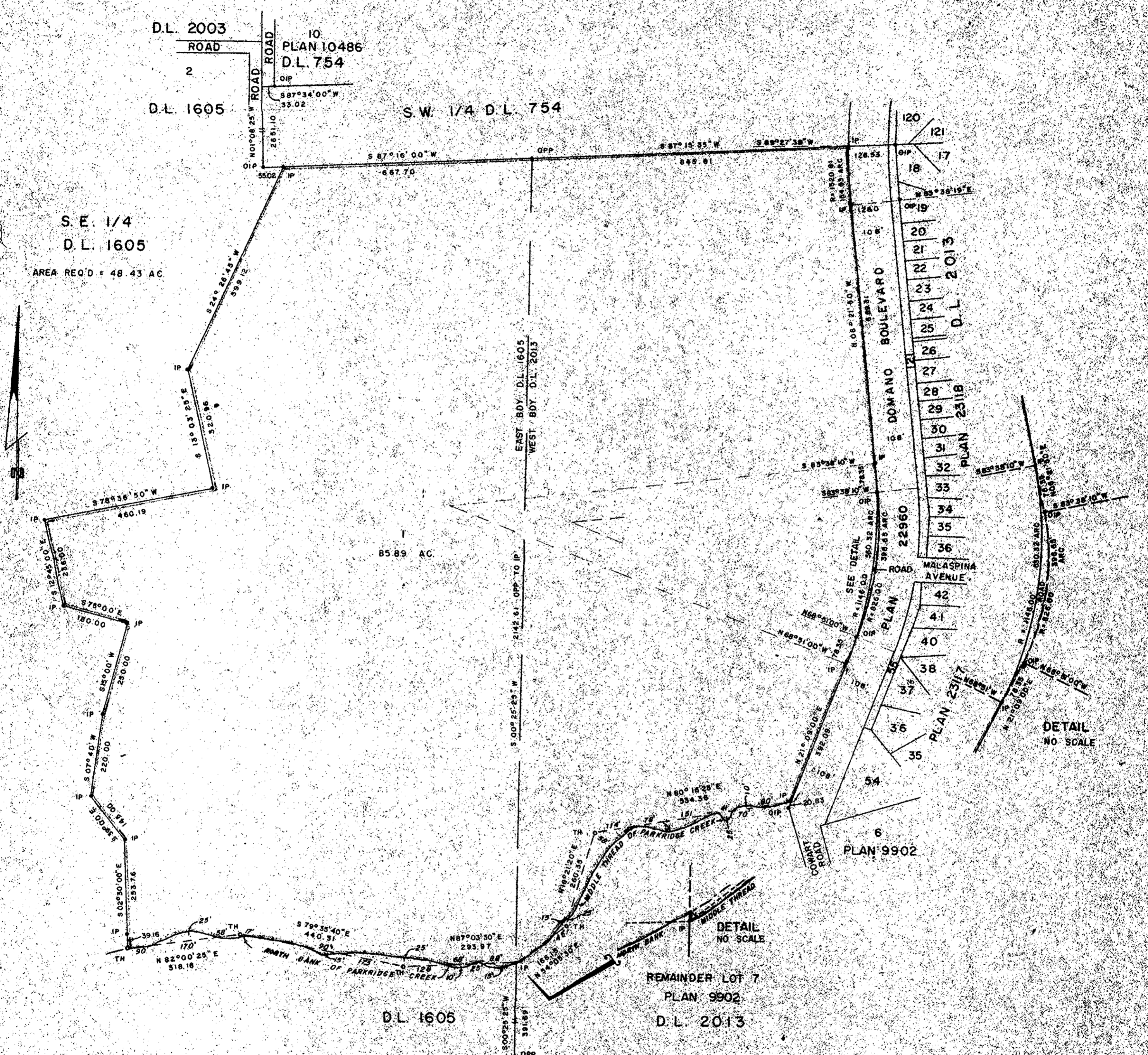
NOTE: Bearings are astronomic, derived from the west boundary of S.W. 1/4 D.L. 754 as shown on Plan 23668.

LEGEND:
• OPP denotes an old pipe post found.
• OIP denotes an old iron pin found.
• IP denotes an iron pin set.
• TH denotes traverse hub.

PLOTTED HD

PLAN NO. 23717
Deposited in the Land Registry Office of Prince George, B.C. the 14th day of NOVEMBER, 1977

C.T. SCHOOLEY
Registrar



I, DONALD A. DUFFY, of the City of Prince George, a British Columbia Land Surveyor, make oath and say that I was present at and did personally superintend the survey represented by this plan and that the survey and plan are correct. The said survey was completed on the 14th day of Nov., 1977

[Signature]
B.C.L.S.

Sworn before me this 16 day of Nov., 1977

[Signature]
Commissioner for Taking Affidavits for British Columbia

D.L. 2005 D.L. 2012

HEIGHTS LAND DEVELOPMENT
C.O. LTD.

[Signature]

Approved under the Land Registry Act
this 16 day of Nov., 1977

[Signature]
Approving Officer, City of Prince George

This plan lies within the Fraser-Fort George Regional District.

W.D. USHER & ASSOCIATES
LAND SURVEYORS
PRINCE GEORGE, B.C.
KA 25 18704