

PLAN No **23715**
 Deposited in the Land Registry
 Office at Prince George, B.C. this
 6. day of DECEMBER, 1977.
E.T. SCHOOLEY
 Registrar
 Per: *GS*

PLAN OF RIGHT-OF-WAY THROUGH
 DISTRICT LOTS 753 & 2003
 CARIBOO DISTRICT - BRITISH COLUMBIA

SCALE: 1" = 100'

NOTE: Bearings are astronomic, derived from the southerly
 boundary of the Yellowhead Highway R/W Plan 22760.

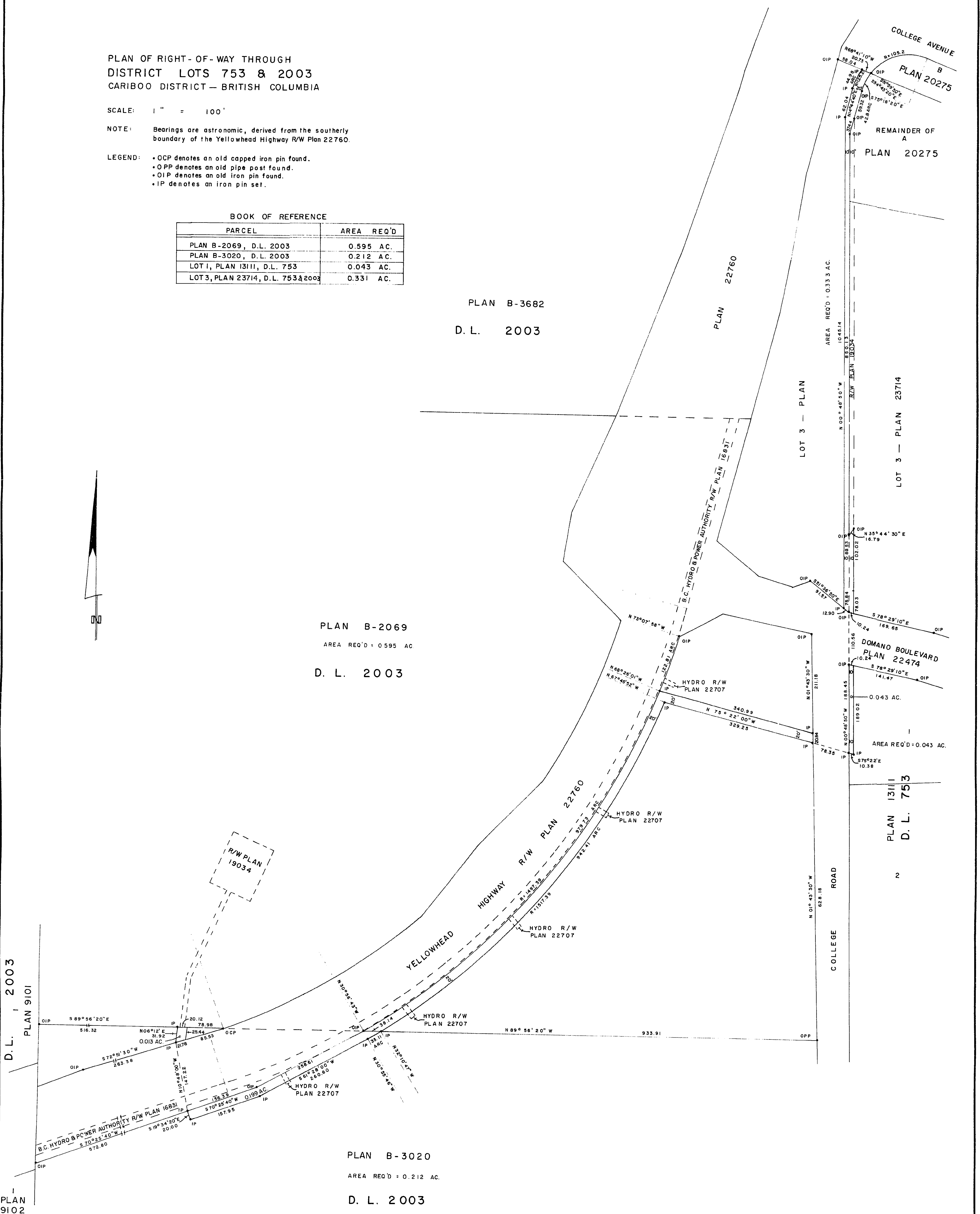
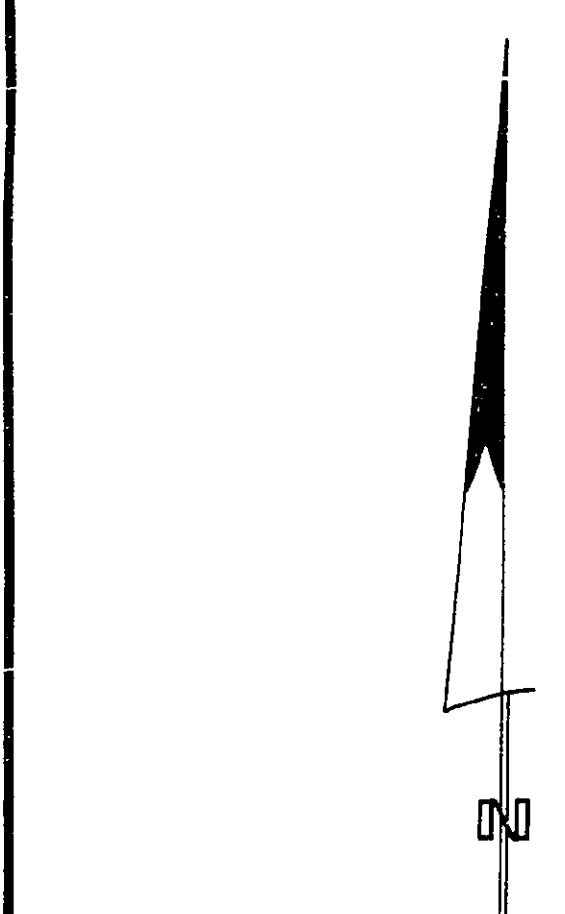
LEGEND: • OCP denotes an old capped iron pin found.
 • OPP denotes an old pipe post found.
 • OIP denotes an old iron pin found.
 • IP denotes an iron pin set.

BOOK OF REFERENCE	
PARCEL	AREA REQ'D
PLAN B-2069, D.L. 2003	0.595 AC.
PLAN B-3020, D.L. 2003	0.212 AC.
LOT 1, PLAN 13111, D.L. 753	0.043 AC.
LOT 3, PLAN 23714, D.L. 753 & 2003	0.331 AC.

PLAN B-3682
 D.L. 2003

PLAN B-2069
 AREA REQ'D: 0.595 AC
 D. L. 2003

PLAN B-3020
 AREA REQ'D: 0.212 AC.
 D. L. 2003



D.L. 2003
 PLAN 9101
 PLAN 9102

I, DONALD A. DUFFY of the City of Prince George, a British Columbia Land Surveyor, make oath and say that I was present at and did personally supervise the survey represented by this plan and that the survey and plan are correct. The said survey was completed on the 20 day of SEPTEMBER, 1976.

[Signature]
 B.C.L.S.

Sworn before me this 27 day of SEPTEMBER, 1976

A Commissioner for taking Affidavits for British Columbia.

This plan lies within the Fraser-Fort George Regional District.

W.D. USHER & ASSOCIATES
 LAND SURVEYORS
 PRINCE GEORGE - B.C.
 IV 5970-9