

P24 (NM)

PLAN OF SUBDIVISION OF PART OF
S. E. 1/4 DISTRICT LOT 954 PLAN (B 1343)
CARIBOO DISTRICT - BRITISH COLUMBIA

SCALE: 1" = 100'

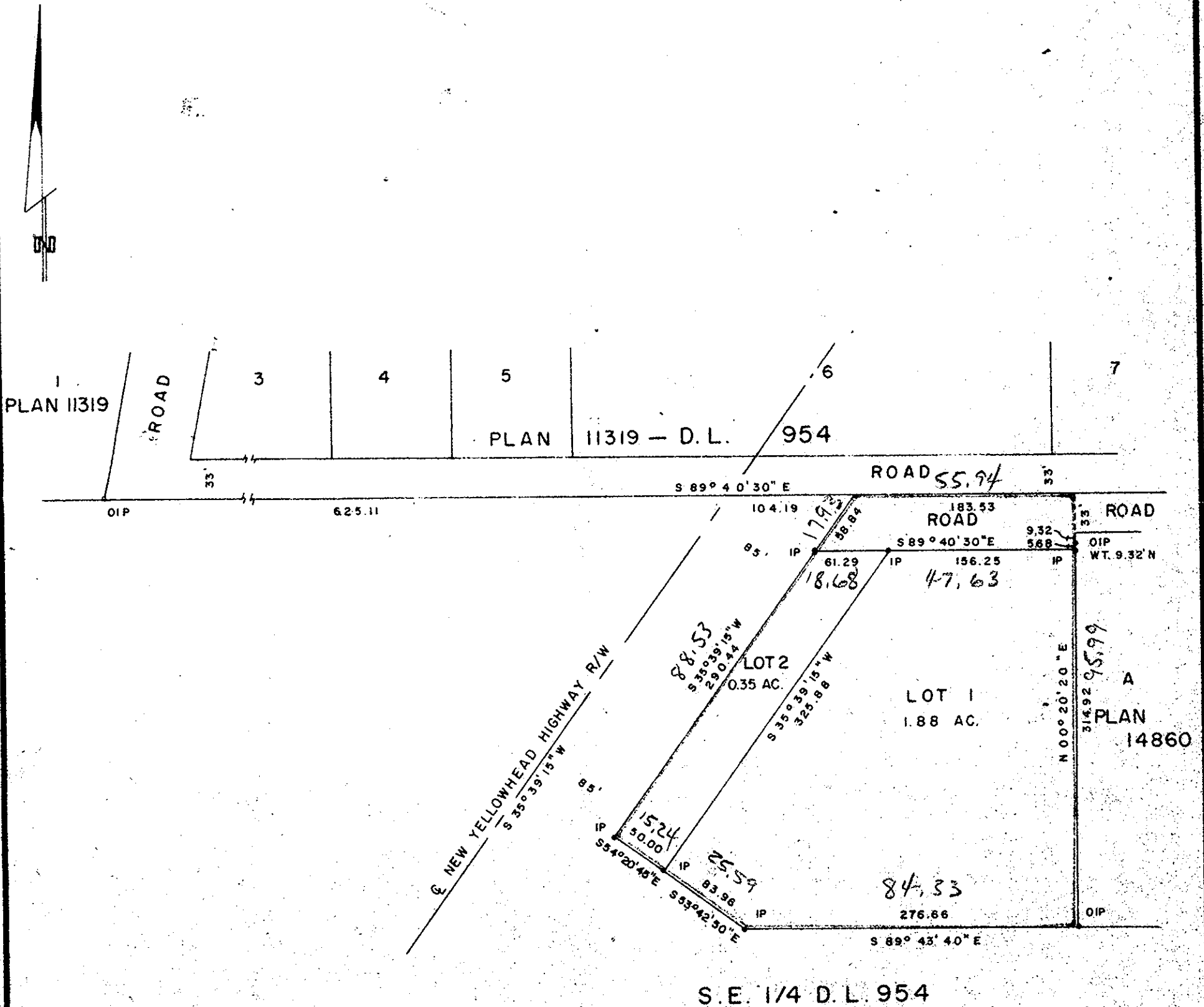
NOTE: Bearings are astronomic, derived from the S. E.
1/4 D. L. 954 as shown on Plans 11319 & 14860.

LEGEND: • OIP denotes an old iron pin found.
• IP denotes an iron pin set.
WT denotes witness.

PLAN N^o 23707

Deposited in the Land Registry
Office at Prince George, B. C. this
2 day of DECEMBER, 1977

E. T. SCHOOLEY
Registrar



I, DONALD A. DUFFY of the City of Prince George,
a British Columbia Land Surveyor, make oath and say
that I was present at and did personally superintend
the survey represented by this plan and that the survey
and plan are correct. The said survey was completed
on the 23 day of SEPT, 1977

[Signature]
B.C.L.S.

Sworn before me this 23
day of SEPT, 1977

A Commissioner for taking Affidavits
for British Columbia

Owner *[Signature]*
Witness *[Signature]*

Approved under the Land Registry Act
this 7th day of OCT, 1977

[Signature]
Approving Officer, City of Prince George

This plan lies within the Fraser-Fort George
Regional District.

W. D. USHER & ASSOCIATES
LAND SURVEYORS
PRINCE GEORGE, B.C.
JL 69 2818 B