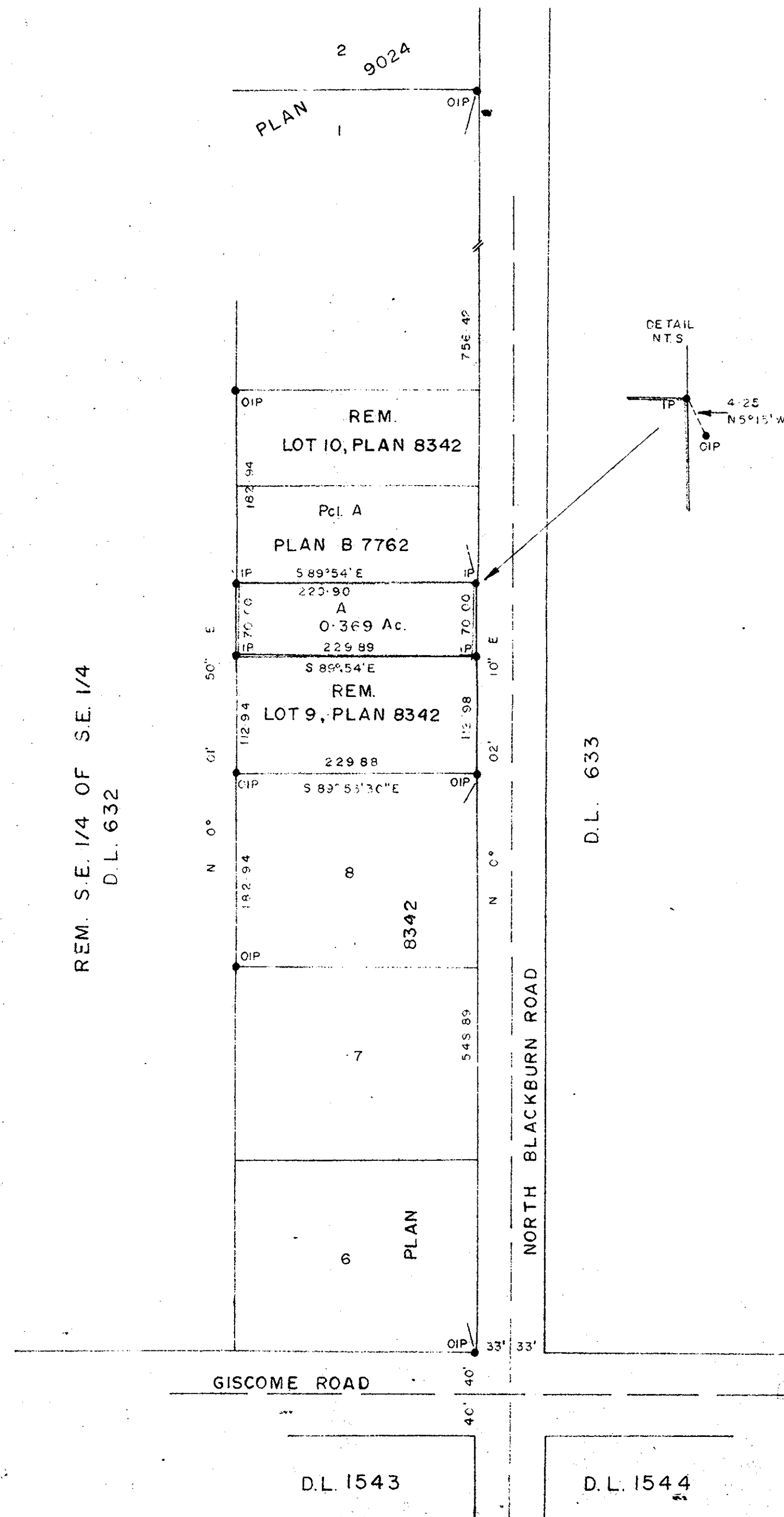


PLAN No 23691
 Deposited in the Land Registry Office at
 PRINCE GEORGE on the 24. day of NOVEMBER 1977.

E. T. SCHOOLEY
 Registrar

PLAN OF SUBDIVISION OF
 PART OF LOT 9 PLAN 8342
 D. L. 632.
 CARIBOO DISTRICT

SCALE: 1" = 100'



Bearings are astronomic and are derived from
 E. BDY PLAN 8342 = N 0° 02' 10" E

- P.con. Standard Concrete Post.
- ⊙ P.Rock Standard Rock Post.
- P.P. Standard Pipe Post.
- I.P. Standard Iron Post.
- P. Wooden Post.
- L.P. Lead Plug.
- Denoting "Old"
- WT. Denoting "Witness"
- CIP. Capped Iron Post

Approved under the Land Registry Act
 on the 13. day of NOV. 1977.

E. T. Schooley
 Approving Officer
 CITY OF PRINCE GEORGE

This plan lies within the FRASER
 FORT GEORGE Regional District.

I, V. BARTELL of the CITY OF PRINCE GEORGE
 British Columbia Land Surveyor, make oath and
 say that I was present at and did personally
 superintend the survey represented by this
 plan and that the survey and plan are correct.
 The said survey was completed on
 the 18. day of August, 1977.

V. Bartell

Sworn before me at PRINCE GEORGE B.C.
 this 18. day of August, 1977.

D. D. ...
 A Commissioner for taking affidavits
 for British Columbia.

Owner *R. D. Downey*
 Owner *H. M. Downey*
 Witness *Jackie Parker*

McWilliam - Whyte - Goble & Associates
 B.C. LAND SURVEYORS
 PRINCE GEORGE | SMITHERS | KAMLOOPS
 REF N: 77100-35