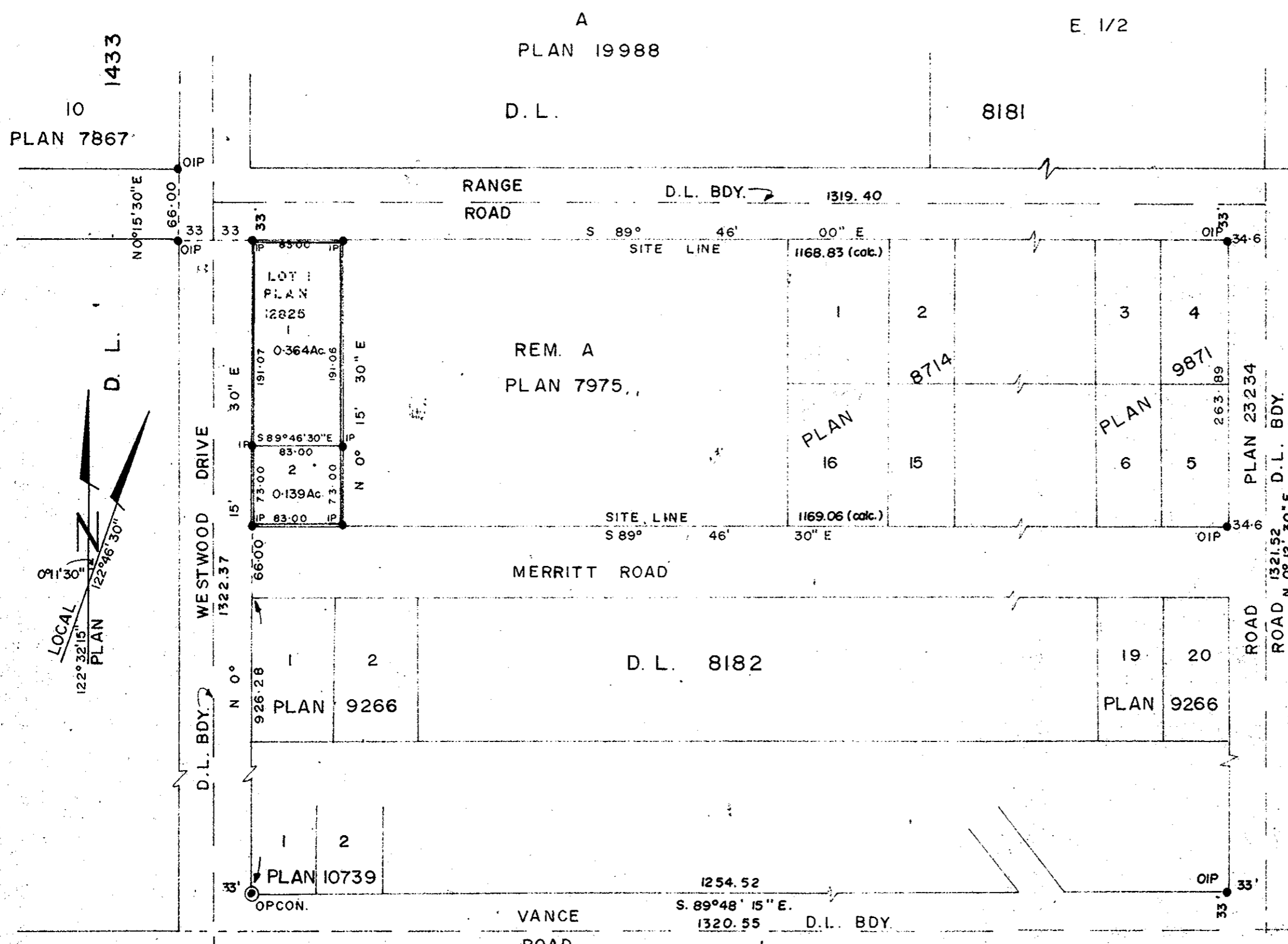


Plotted (HH)



PLAN NO. **23648**
 DEPOSITED IN THE LAND REGISTRY OFFICE
 AT PRINCE GEORGE THIS 10 DAY OF
NOVEMBER 1977.

E.T. SCHOLEY
 REGISTRAR

PLAN OF SUBDIVISION OF
 LOT 1, PLAN 12825 D.L. 8182
 CARIBOO DISTRICT

SCALE: 1" = 100'

LEGEND:
 BEARINGS ARE ASTRONOMIC DERIVED FROM STELLAR
 OBSERVATIONS LONG. 122° 32' 15" LAT. 53° 54' 58"

- PLAN 17945 ○ P CON. --- STANDARD CONCRETE POST
- IP. --- STANDARD IRON POST
- --- DENOTING "OLD"

I, V. BARTELL OF THE CITY OF PRINCE GEORGE BRITISH
 COLUMBIA LAND SURVEYOR MAKE OATH AND SAY THAT
 I WAS PRESENT AT AND DID PERSONALLY SUPERINTEND
 THE SURVEY REPRESENTED BY THIS PLAN AND THAT
 THE SURVEY AND PLAN ARE CORRECT. THE SAID SURVEY
 WAS COMPLETED ON THE 5 DAY OF October 1977.

V. Bartell
 V. BARTELL B.C.L.S.

SWORN BEFORE ME AT PRINCE GEORGE THIS 5 DAY OF
October 1977.

B
 A. COMMISSIONER FOR TAKING AFFIDAVITS
 FOR BRITISH COLUMBIA
 APPROVED UNDER THE LAND REGISTRY ACT ON THE 4 DAY OF
NOV 1977.

[Signature]
 APPROVING OFFICER
 OWNER *Rev. E. Stangl, W. Wynnyshuk, A. Varychuk*
 WITNESS *and Lewis*

D.L. 905

OWNER OF MORTGAGE ----- D.L. 753
 WITNESS -----

THIS PLAN LIES WITHIN THE FRASER FORT GEORGE REGIONAL
 DISTRICT.
THE ROYAL BANK OF CANADA
 by its *lawful attorneys:*

McWILLIAM-WHYTE-GOBLE & ASSOCIATES
 B.C. LAND SURVEYORS
 PRINCE GEORGE-SMITHERS-KAMLOOPS
 REF. NO. 77119