

PLAN OF SUBDIVISION OF PARTS OF
LOTS 2 & 5, PLAN 9902
DISTRICT LOT 2013
CARIBOO DISTRICT-BRITISH COLUMBIA

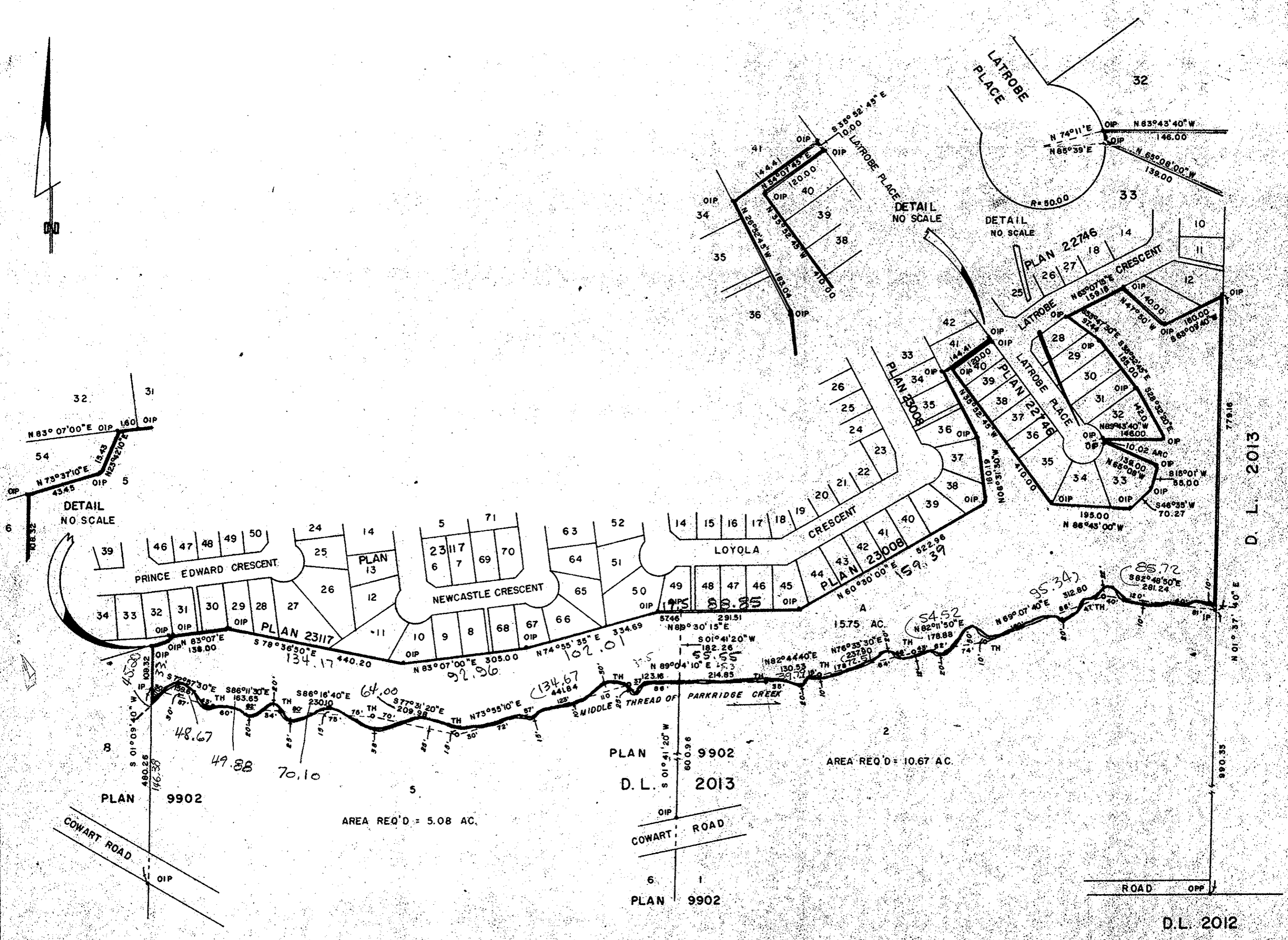
SCALE: 1" = 200'

NOTE: Bearings are astronomic, derived from the east
boundary of Lot 2, Plan 9902 as shown on Plan 22746.

LEGEND: • OPP denotes an old pipe post found.
• OIP denotes an old iron pin found.
• IP denotes an iron pin set.
• TH denotes traverse hub.

PLAN N^o 23634
Deposited in the Land Registry
Office at Prince George, B.C. this
28 day of October, 1977

E.T. SCHOOLEY
Registrar



I, DONALD A. DUFFY, of the City of Prince George,
a British Columbia Land Surveyor, make oath and say
that I was present at and did personally superintend
the survey represented by this plan and that the survey
and plan are correct. The said survey was completed
on the 14 day of June, 1977

[Signature]
B.C.L.S.

Sworn before me this 27
day of June, 1977

A Commissioner for Taking Affidavits
for British Columbia.

HEIGHTS LAND DEVELOPMENT
CO. LTD.

[Signature]
[Signature]

Approved under the Land Registry Act
this 28 day of October, 1977

[Signature]
Approving Officer, City of Prince George

This plan lies within the Fraser-Fort George
Regional District.

W. D. USHER & ASSOCIATES
LAND SURVEYORS
PRINCE GEORGE, B.C.
48 63 5370 W