

1501

PLOTTED

(PK)

53831

PLAN OF SUBDIVISION OF  
 LOT A, PLAN 12436  
 DISTRICT LOT 633  
 CARIBOO DISTRICT - BRITISH COLUMBIA

SCALE: 1" = 100'

NOTE: Bearings are astronomic, derived from the northwesterly boundary of Lot A, Plan 12436.

LEGEND: • OIP denotes an old iron pin found.  
 • IP denotes an iron pin set.

PLAN N<sup>o</sup> 23631

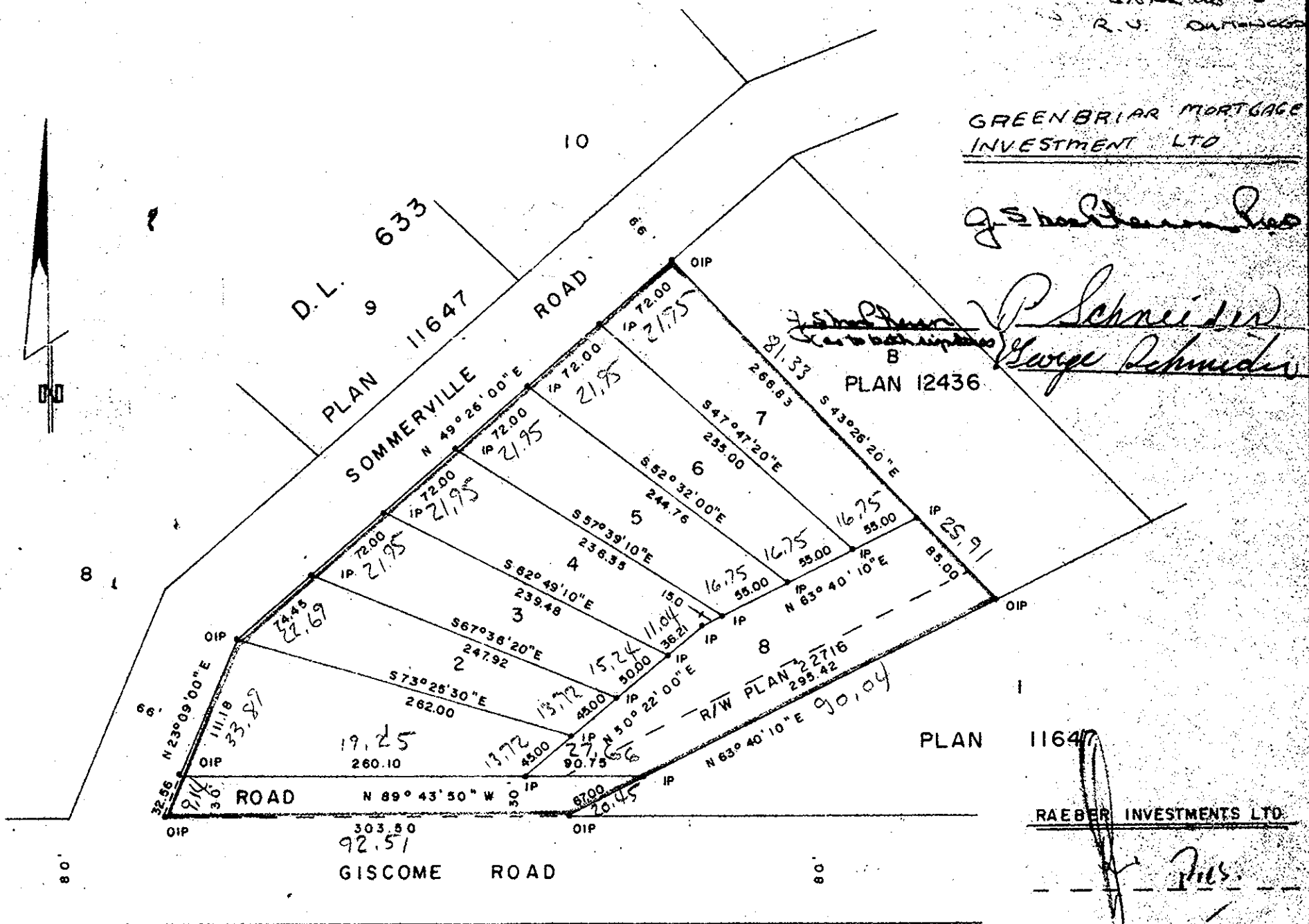
Deposited in the Land Registry Office at Prince George, B.C. this 20 day of OCTOBER, 1977.

**E. T. SCHOOLEY**  
 Registrar

*Proy Sch made*  
*PEP N. Commercial*  
*Road of Duranceau*  
*Committee of Estate of Roy Schmade*  
 IL

GREENBRIAR MORTGAGE INVESTMENT LTD

*George Schneider*  
 B  
 PLAN 12436



RAEBER INVESTMENTS LTD

I, DONALD A. DUFFY of the City of Prince George, a British Columbia Land Surveyor, make oath and say that I was present at and did personally superintend the survey represented by this plan and that the survey and plan are correct. The said survey was completed on the 18 day of OCT, 1977.

*[Signature]*  
 B.C.L.S.

Sworn before me this 19 day of OCT, 1977

A Commissioner for taking Affidavits for British Columbia.

APPROVED AS TO DEDICATION AS ROAD OF PART OF PLAN 22716. CITY OF PRINCE GEORGE

*[Signature]*  
 MAYOR  
*[Signature]*  
 CLERK

Approved under the Land Registry Act this 19 day of OCT, 1977

*[Signature]*  
 Approving Officer, City of Prince George

This plan lies within the Fraser-Fort George Regional District.

W. D. USHER & ASSOCIATES  
 LAND SURVEYORS  
 PRINCE GEORGE, B.C.  
 KU 21-22 9268