

PLAN OF SUBDIVISION OF
 LOT 88, PLAN 22200
 DISTRICT LOT 754
 CARIBOO DISTRICT - BRITISH COLUMBIA

(HD)

SCALE: 1" = 50'

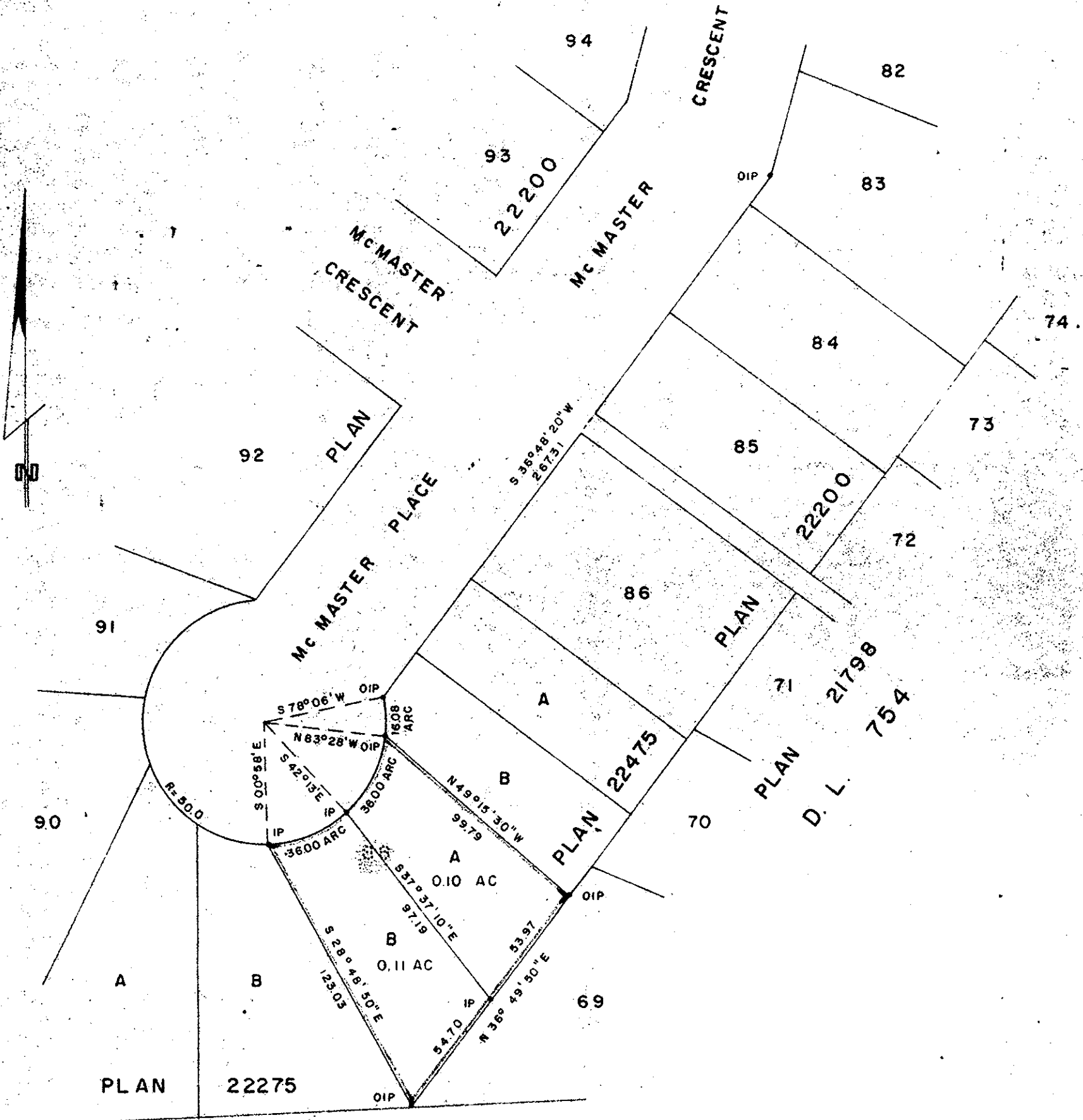
NOTE: Bearings are astronomic, derived from the south easterly boundary of McMaster Place, Plan 22200.

LEGEND: • OIP denotes an old iron pin found.
 • IP denotes an iron pin set.

PLAN No 23617

Deposited in the Land Registry Office at Prince B.C. this 20 day of October, 1977.

E.T. SCHOOLEY
 Registrar



PLAN 9902
 D. L. 2013

I, DONALD A. DUFFY of the City of Prince George, a British Columbia Land Surveyor, make oath and say that I was present at and did personally superintend the survey represented by this plan and that the survey and plan are correct. The said survey was completed on the 2nd day of MARCH, 1977.

[Signature]
 B.C.L.S.

Sworn before me this 7 day of MARCH, 1977

[Signature]
 A Commissioner for taking Affidavits for British Columbia.

HEIGHTS LAND DEVELOPMENT
[Signature]
[Signature]

Approved under the Land Registry Act this 22nd day of APRIL, 1977

[Signature]
 Approving Officer, City of Prince George

This plan lies within the Fraser-Fort George Regional District.

Reapproved Sept. 14/77
[Signature]

W. D. USHER & ASSOCIATES
 LAND SURVEYORS
 PRINCE GEORGE B.C.
 J.H. 55 8760