

PLAN OF SUBDIVISION OF PART OF
 LOT G, PLAN 18926
 DISTRICT LOT 4040
 CARIBOO DISTRICT - BRITISH COLUMBIA

SCALE: 1" = 100'

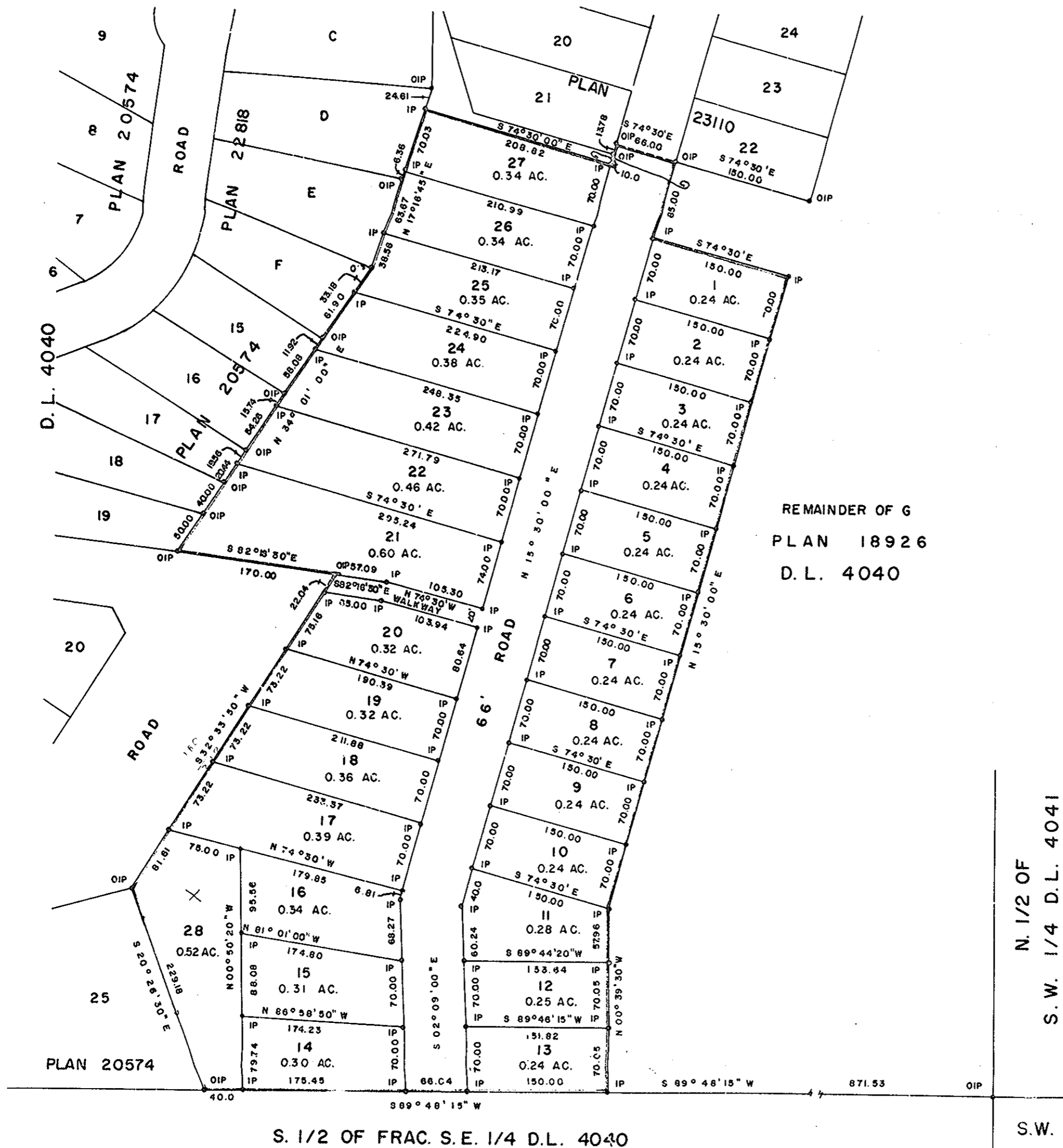
NOTE: Bearings are astronomic, derived from the
 south boundary of Lot 22, Plan 23110.

LEGEND: •OIP denotes an old iron pin found.
 •IP denotes an iron pin set.

PLAN No 23557

Deposited in the Land Registry
 Office at Prince George, B.C. this
 21st day of September, 1977

"E.T. Schooley"
 Registrar p.c.



REMAINDER OF G
 PLAN 18926
 D.L. 4040

N. 1/2 OF
 S.W. 1/4 D.L. 4041

I, DONALD A. DUFFY of the City of Prince George,
 a British Columbia Land Surveyor, make oath and say
 that I was present at and did personally superintend
 the survey represented by this plan and that the survey
 and plan are correct. The said survey was completed
 on the 4th day of July, 1977.

[Signature]
 A.C.L.S.

Sworn before me this 20th
 day of SEPT. 1977

[Signature]
 A Commissioner for taking Affidavits
 for British Columbia.

MOUNT ALDER ESTATES LTD.

[Signature]

ROYAL BANK OF CANADA
 BY IT'S LAWFUL ATTORNEYS

[Signature]
 Leonard R. Zunkelt sec.

Approved under the Land Registry Act
 this 20th day of SEPT. 1977

[Signature]
 Approving Officer, City of Prince George

This plan lies within the Fraser-Fort George
 Regional District.

W. D. USHER & ASSOCIATES
 LAND SURVEYORS
 PRINCE GEORGE - B.C.