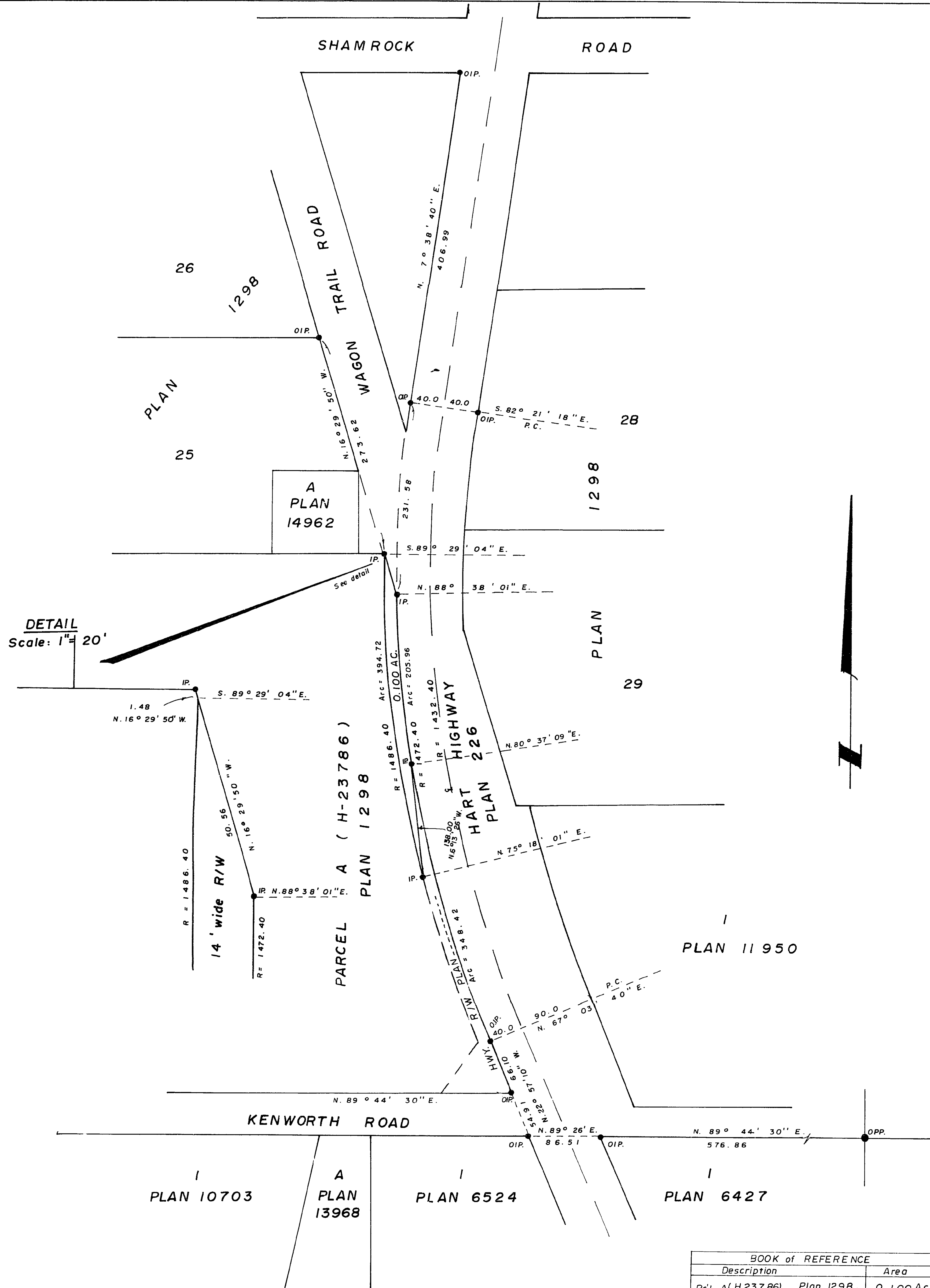


PLAN NO. **23550**

DEPOSITED IN THE LAND REGISTRY OFFICE AT PRINCE GEORGE THIS 14 DAY OF SEPT 1977.

E.T. SCHOOLEY
REGISTRAR

PER: 



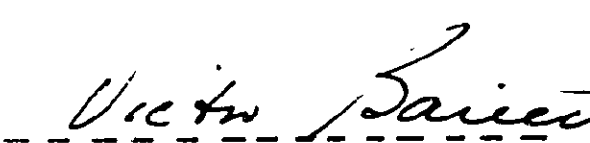
PLAN OF RIGHT-OF-WAY
IN PARCEL A (H-23786)
OF PLAN 1298, N.W. 1/4
D.L. 4040, CARIBOO DISTRICT.

SCALE : 1" = 100'

BEARINGS ARE ASTRONOMIC DERIVED FROM N. B.D.Y. PLAN 6427, SHOWN AS N. 89° 44' 30" E.

- I.P. ... STANDARD IRON POST.
- P.P. ... STANDARD PIPE POST.
- ... DENOTES "OLD"

I, V. BARTELL, OF THE CITY OF PRINCE GEORGE, BRITISH COLUMBIA LAND SURVEYOR MAKE OATH AND SAY THAT I WAS PRESENT AT AND DID PERSONALLY SUPERINTEND THE SURVEY REPRESENTED BY THIS PLAN AND THAT THE SURVEY AND PLAN ARE CORRECT. THE SAID SURVEY WAS COMPLETED ON THE 2 DAY OF September 1977.


V. BARTELL, B.C.L.S.

SWORN BEFORE ME AT PRINCE GEORGE, B.C. THIS 2 DAY OF September 1977

THIS PLAN LIES WITHIN THE FRASER FORT GEORGE REGIONAL DISTRICT.


A COMMISSIONER FOR TAKING AFFIDAVITS FOR BRITISH COLUMBIA.

| BOOK of REFERENCE | |
|-----------------------------|-----------|
| Description | Area |
| Pc'l A (H23786), Plan 1298, | 0.100 Ac. |

McWilliam, Whyte, Goble, & Associates,
B.C. Land Surveyors,
Prince George - Kamloops - Smithers.

REF. NO. 77100-41

D.L. 4040