

52230

PLAN OF SUBDIVISION OF
LOTS 30 & 32, PLAN 21188
DISTRICT LOT 2100
CARIBOO DISTRICT - BRITISH COLUMBIA

SCALE: 1" = 100'

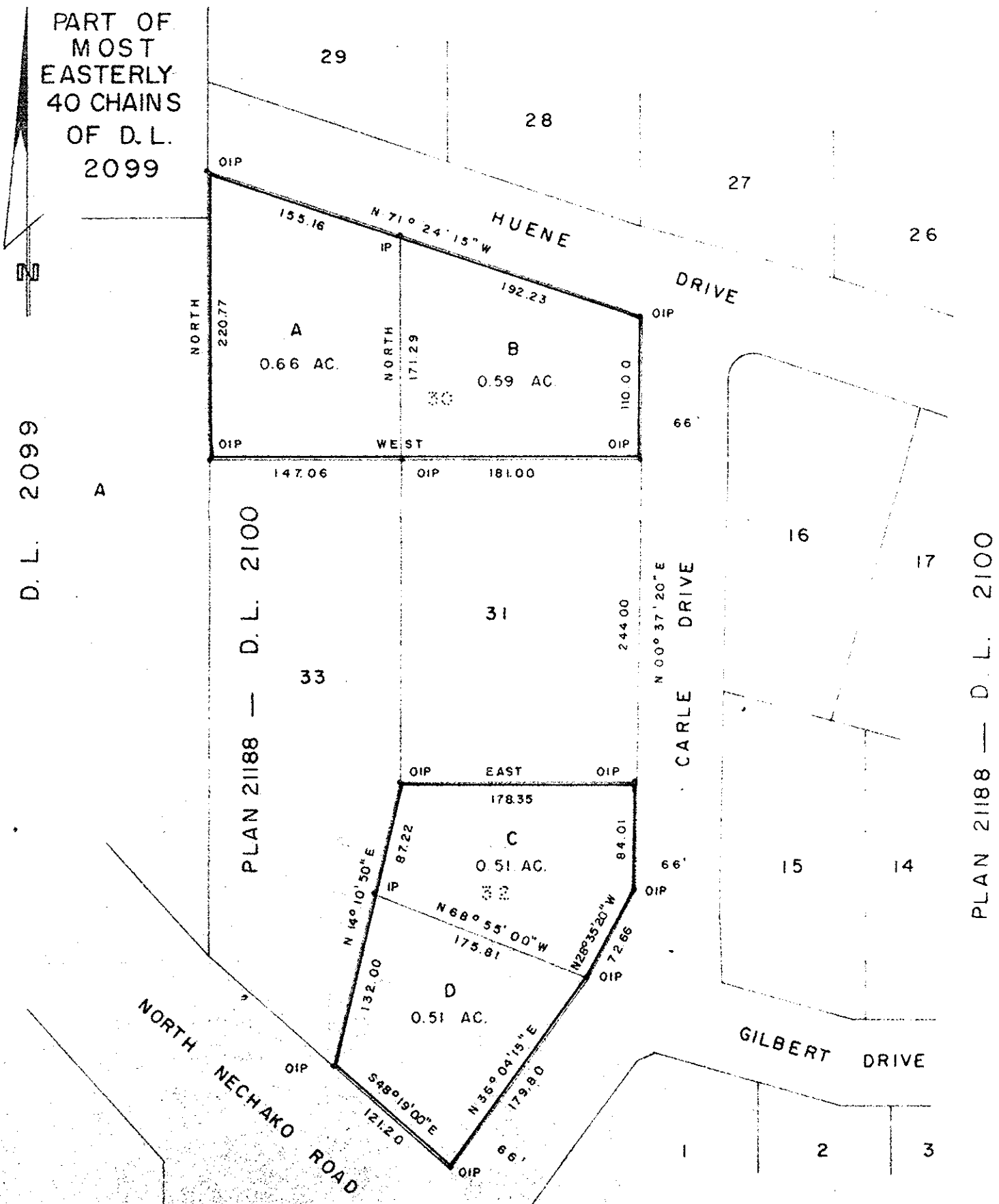
NOTE: Bearings are astronomic, derived from the
north boundary of Lot 30, Plan 21188.

LEGEND: •OIP denotes an old iron pin found.
•IP denotes an iron pin set.

PLAN N^o 23539

Deposited in the Land Registry
Office at Prince George, B.C. this
9th day of SEPTEMBER, 1977.

E.T. SCHOOLEY
Registrar



D.L. 2099

PLAN 21188 — D.L. 2100

I, DONALD A. DUFFY of the City of Prince George,
a British Columbia Land Surveyor, make oath and say
that I was present at and did personally superintend
the survey represented by this plan and that the survey
and plan are correct. The said survey was completed
on the 7 day of SEPTEMBER, 1977.

[Signature]
B.C.L.S.

Sworn before me this 12th
day of OCTOBER, 1977

[Signature]
Commissioner for Taking Affidavits
for British Columbia

I. TOOMBS & SONS HOMES LTD.

[Signature]
SECRETARY

Approved under the Land Registry Act
this 8th day of SEPT, 1977

[Signature]
Approving Officer, City of Prince George

This plan lies within the Fraser-Fort George
Regional District.

W. D. USHER & ASSOCIATES
LAND SURVEYORS
PRINCE GEORGE - B.C.
KL 8 9917