

(FL)

PLAN OF SUBDIVISION OF  
LOTS 1, 2, 3 & 4, PLAN 22809  
DISTRICT LOT 2609  
CARIBOO DISTRICT - BRITISH COLUMBIA

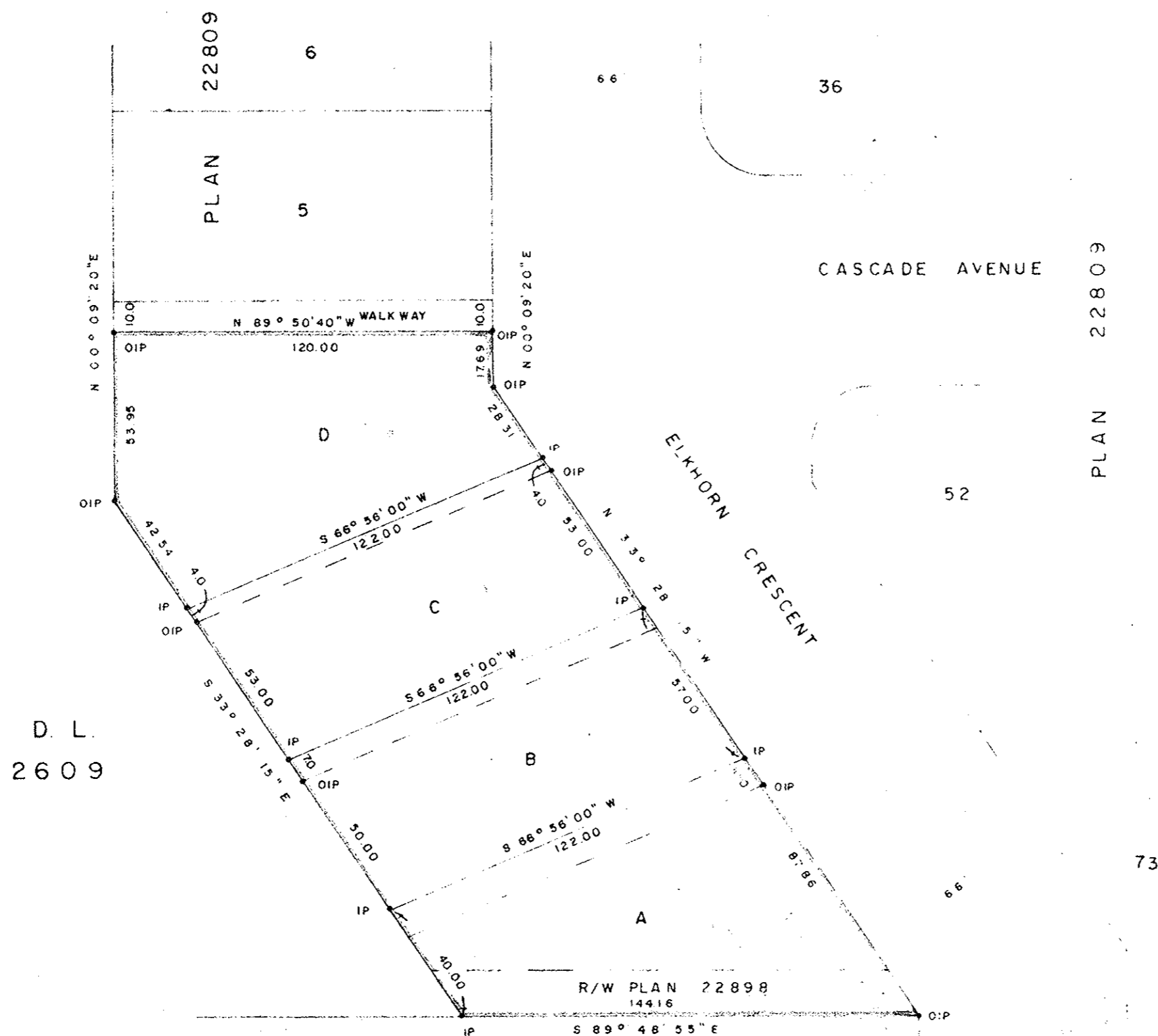
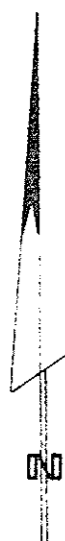
SCALE: 1" = 40'

NOTE: Bearings are astronomic, derived from the southwesterly boundary of Elkhorn Crescent as shown on Plan 22809.

LEGEND: • OIP denotes an old iron pin found.  
• IP denotes an iron pin set.

PLAN N<sup>o</sup> 23510  
Deposited in the Land Registry  
Office at Prince George, B.C. this  
23 day of August, 1977

"E.T. Schooley"  
Registrar



D. L.  
2609

B  
PLAN 17284  
D. L. 2607

BELWOOD CONSTRUCTION LTD.

THE CANADIAN IMPERIAL  
BANK OF COMMERCE

MORTGAGEE  
CITY OF PRINCE GEORGE

AZURE

AVENUE

*[Signature]*  
Mayor

*[Signature]*  
Clerk

Approved under the Land Registry Act  
this 11<sup>th</sup> day of May, 1977

*[Signature]*  
Approving Officer, City of Prince George

This plan lies within the Fraser-Fort George  
Regional District

I, DONALD A. DUFFY of the City of Prince George,  
a British Columbia Land Surveyor, make oath and say  
that I was present at and did personally superintend  
the survey represented by this plan and that the survey  
and plan are correct. The said survey was completed  
on the 3 day of May, 1977

*[Signature]*  
B.C.L.S.

Sworn before me this 5<sup>th</sup>  
day of May, 1977

A Commissioner for taking Affidavits  
for British Columbia.