

PLAN OF SUBDIVISION OF PART OF THAT PART OF  
DISTRICT LOT 4201 LYING S. OF DISTRICT LOT 3616  
CARIBOO DISTRICT - BRITISH COLUMBIA

SCALE: 1" = 100'

NOTE: Bearings are astronomic, derived from the west  
boundary of D. L. 4201 as shown on Plan 16023.

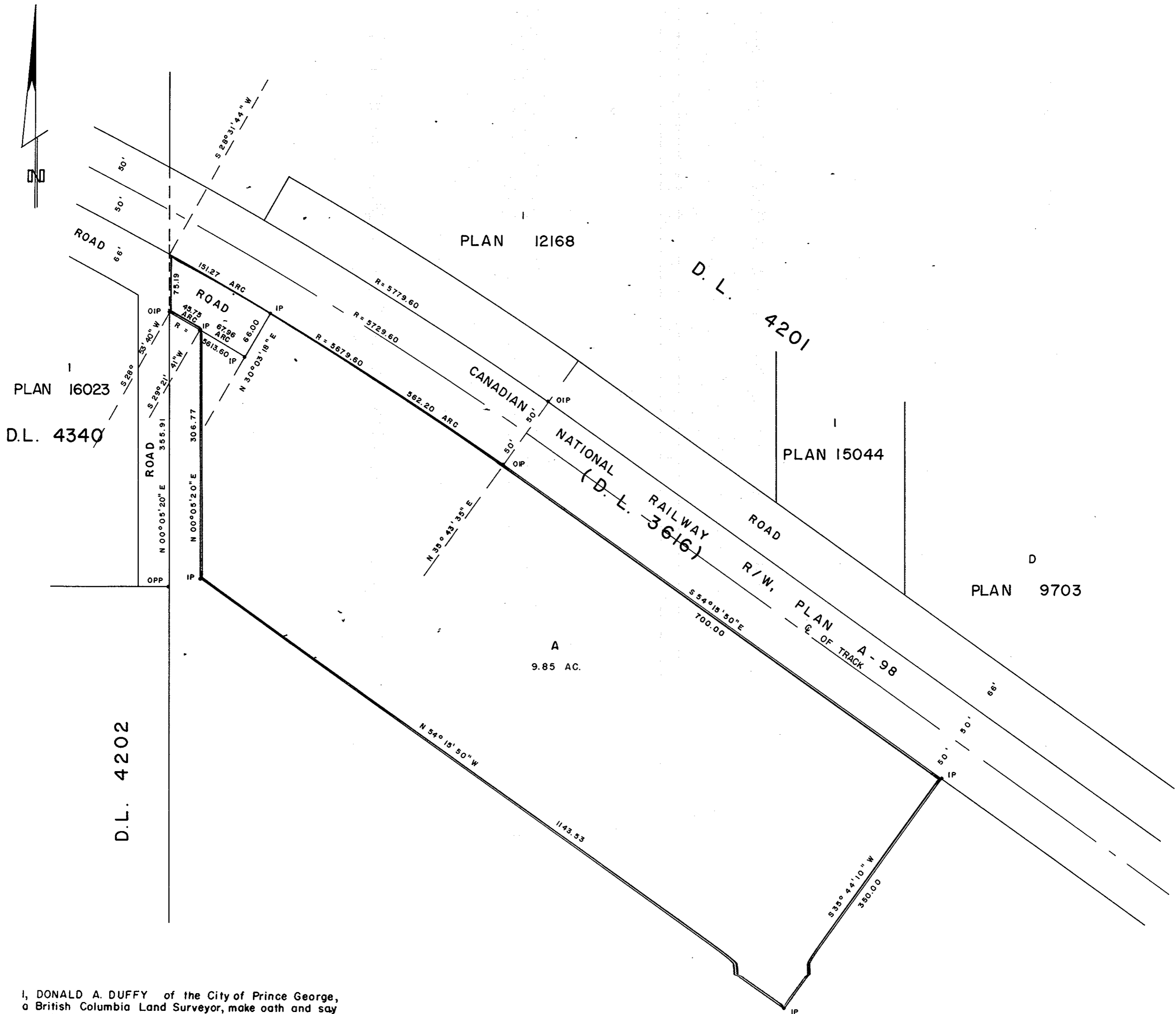
LEGEND: • OPP denotes an old pipe post found.  
• OIP denotes an old iron pin found.  
• IP denotes an iron pin set.

PLAN N° 23478

Deposited in the Land Registry  
Office at Prince George, B.C. this  
9 day of August, 1977

"E. J. Schooley"  
Registrar

For L.C.A. Clearance see  
M 21927



I, DONALD A. DUFFY of the City of Prince George,  
a British Columbia Land Surveyor, make oath and say  
that I was present at and did personally superintend  
the survey represented by this plan and that the survey  
and plan are correct. The said survey was completed  
on the 16 day of Nov, 1976

*[Signature]*  
B.C.L.S.

Sworn before me this 25 day of MARCH, 1977

A Commissioner for taking Affidavits  
for British Columbia.

PRINCE GEORGE GRAVEL COMPANY LIMITED

*[Signature]*  
Sec.

D.L. 4201

Approved under the Land Registry Act  
this 15<sup>th</sup> day of APRIL, 1977

*[Signature]*  
Approving Officer, City of Prince George

This plan lies within the Fraser-Fort George  
Regional District.