

PLAN of SUBDIVISION of
 ASSIGNED PARCEL, PLAN.....,
 DISTRICT LOTS 2611, 8171, and 8174,
 CARIBOO DISTRICT.
 Scale: 1" = 100'

SUBJECT TO THE CONDITIONS IMPOSED BY MY ORDER DATED NOV. 25th 1926...
 I ALLOW THIS SUBDIVISION TO BE MADE AND EVIDENCED IN THE MANNER
 PRESCRIBED BY SECTION 80(9), LAND REGISTRY ACT, CHAPTER 171, R.S.B.C., 1941
 DATED AT VICTORIA, B.C., THIS 25th DAY OF ... A.D. 1926.

E. J. Schooley
 SURVEYOR - GENERAL

THE CONDITIONS OF THE ABOVE MENTIONED ORDER, ARE ACCEPTED

NAME OF SUBDIVIDER
 City of Prince George

THE ORDER OF THE SURVEYOR GENERAL DATED: NOV 25th 1926...
 HAS BEEN FILED IN THE LAND REGISTRY OFFICE, PRINCE GEORGE, B.C.
 AS NUMBER 17100

E. J. SCHOOLEY
 REGISTRAR OF TITLES

THIS PLAN LIES WITHIN THE FRASER FORT
 GEORGE REGIONAL DISTRICT.

BEARINGS ARE ASTROMOMIC DERIVED FROM
 PLAN 21607.
 ● IP... STANDARD IRON POST.
 ● SP... STANDARD PIPE POST.
 ● CIP... CAPPED IRON POST.
 ● PCON... STANDARD POST IN CONCRETE.
 O... DENOTES "OLD".

APPROVED UNDER THE LAND REGISTRY ACT
 THIS 31st DAY OF ... 1976.

C. E. Obit
 APPROVING OFFICER
 CITY OF PRINCE GEORGE
 Reapproved Mar. 16, 1977
C. E. Obit Reapproved Aug 5, 1977

I, V. BARTELL, OF THE CITY OF PRINCE GEORGE,
 BRITISH COLUMBIA LAND SURVEYOR, MAKE OATH AND
 SAY THAT I WAS PRESENT AT AND DID PERSONALLY
 SUPERINTEND THE SURVEY REPRESENTED BY THIS
 PLAN AND THAT THE SURVEY AND PLAN ARE CORRECT.
 THE SAID SURVEY WAS COMPLETED ON
 THE 22nd DAY OF ... 1976.

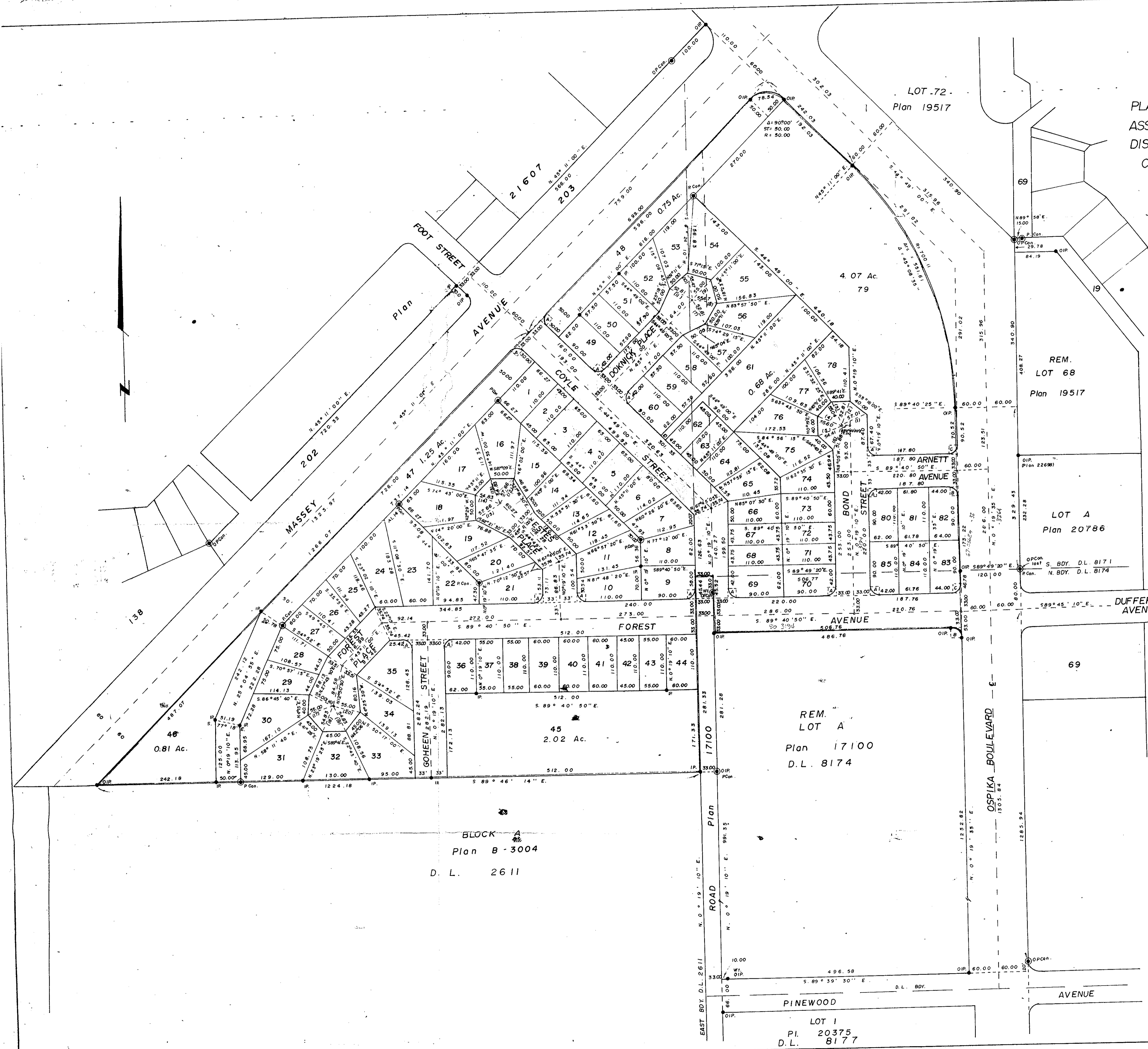
V. Bartell
 V. BARTELL, B.C.L.S.

SWORN, BEFORE ME AT PRINCE GEORGE,
 THIS 25th DAY OF ... 1976.
[Signature]
 A COMMISSIONER FOR TAKING AFFIDAVITS
 FOR BRITISH COLUMBIA.

THE SEAL OF THE CITY OF PRINCE GEORGE
 WAS AFFIXED HERETO IN THE PRESENCE OF:

MAYOR: *[Signature]*
 CITY CLERK: *[Signature]*

McWILLIAM, WHITE, GOBLE, & ASSOCIATES
 B. C. LAND SURVEYORS
 PRINCE GEORGE - KAMLOOPS - SMITHS
 REF. NO. 74100-24



Total area within red outline = 28.74 Ac.

| CURVE DATA - STREET INTERSECTIONS | | |
|-----------------------------------|-----------------|-----------------|
| A | B | C |
| Δ = 90° 00' 00" | Δ = 90° 00' 25" | Δ = 89° 59' 35" |
| ST. = 20.00 | ST. = 20.00 | ST. = 20.10 |
| R = 20.00 | R = 20.00 | R = 20.30 |
| Arc. = 31.42 | Arc. = 31.42 | Arc. = 31.42 |

| Sta. | Distance | Bearing |
|------|----------|-----------------|
| 1 | 57.01 | N 61° 36' 05" E |
| 2 | 52.81 | N 19° 05' 53" E |
| 3 | 55.04 | N 24° 52' 55" W |
| 4 | 53.60 | S 68° 46' 05" W |
| 5 | 54.41 | S 70° 36' 20" W |
| 6 | 51.88 | S 26° 28' 10" W |
| 7 | 52.81 | S 26° 03' 40" E |
| 8 | 55.47 | S 60° 59' 45" E |
| 9 | 55.00 | N 45° 11' 00" E |
| 10 | 55.47 | N 6° 38' 13" W |
| 11 | 52.81 | N 63° 34' 20" W |
| 12 | 57.66 | N 32° 07' 00" E |
| 13 | 54.83 | N 20° 35' 20" W |
| 14 | 54.83 | N 69° 02' 40" W |
| 15 | 57.66 | S 58° 15' 00" W |
| 16 | 55.00 | N 64° 25' 50" W |
| 17 | 55.00 | S 72° 55' 20" W |
| 18 | 54.83 | S 24° 32' 50" W |
| 19 | 54.83 | S 23° 54' 30" E |
| 20 | 55.00 | S 72° 17' 00" E |