

PLAN TO ACCOMPANY BY-LAW 2958

CITY of PRINCE GEORGE

TO CLOSE REMAINDER of LANE AS DEDICATED
ON BY-LAW PLAN B-7956 and ADJOINING LOT 2,
PLAN 22956, LOT 18, BLOCK 270, PLAN 1268 and
CLOSED LANE PLAN B-7956.

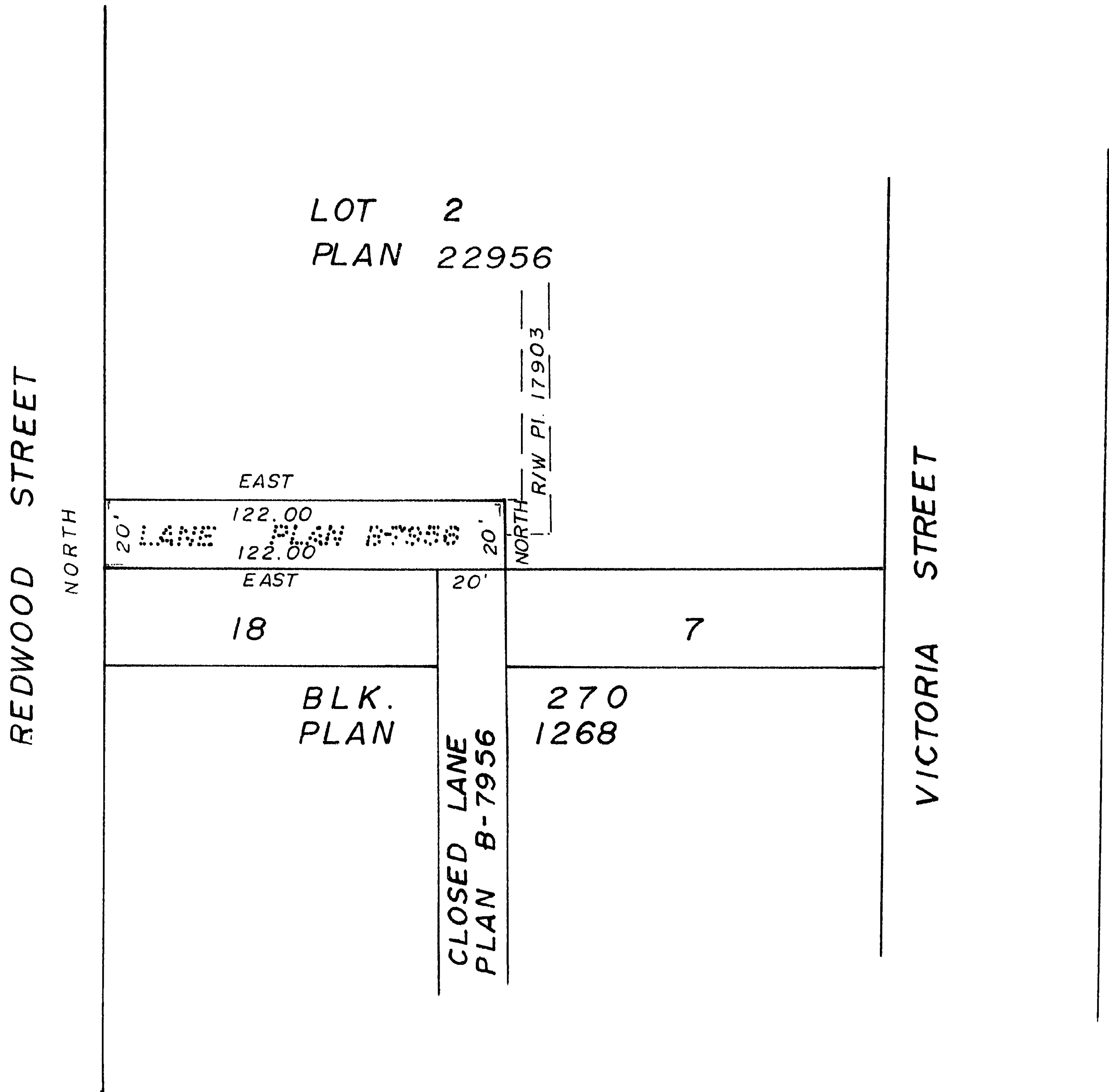
DISTRICT LOT 343, CARIBOO DISTRICT.

Scale: 1" = 50'

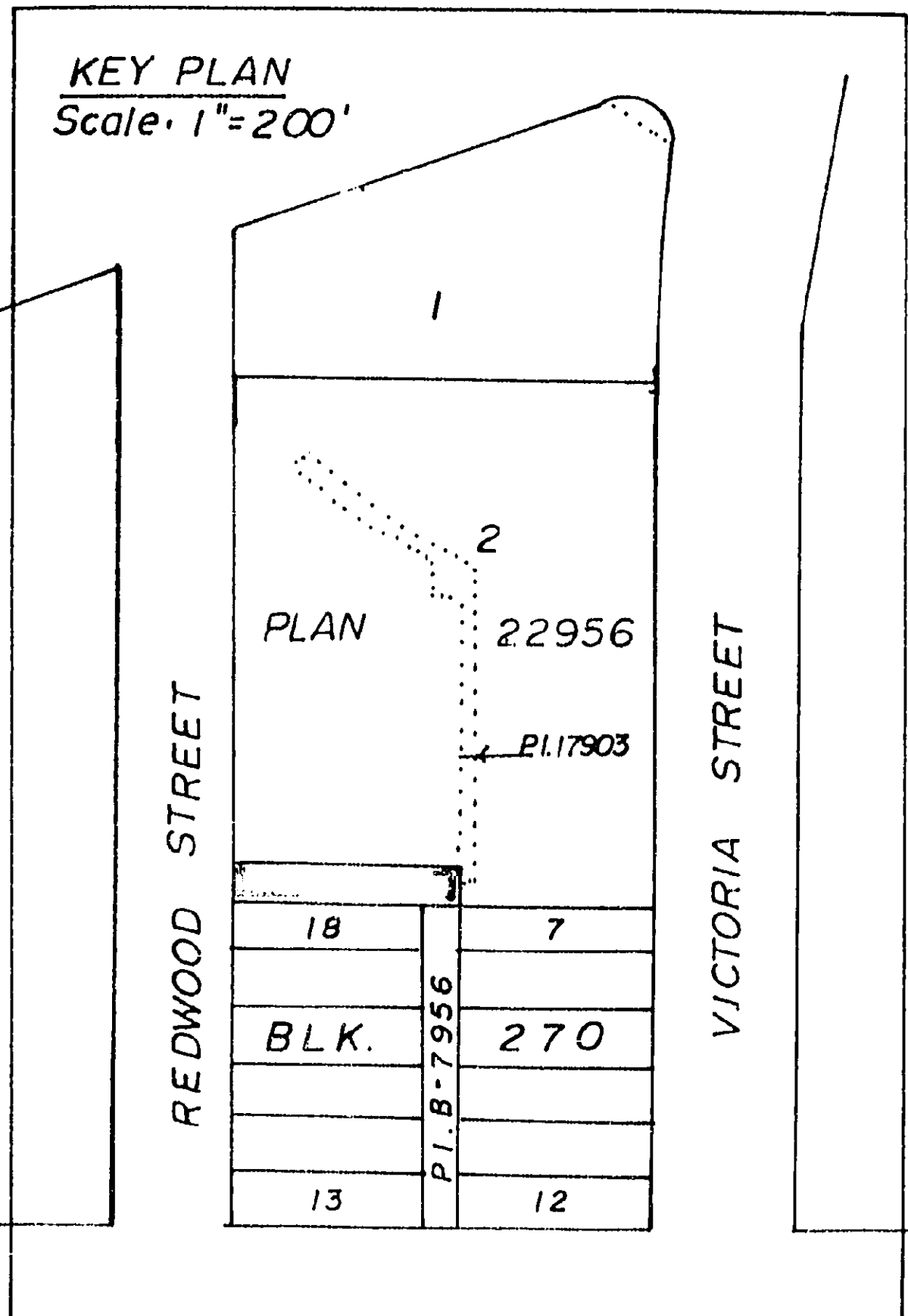
PLAN NO. **23390**

Deposited in the Land Registry Office at
Prince George this 20 day of June, 1977.

"E. T. Schooley"
Registrar pu: CR



KEY PLAN
Scale: 1" = 200'



CERTIFIED CORRECT
ACCORDING TO LAND REGISTRY OFFICE RECORDS
THIS 11 DAY OF December, 1976.

V. Bartell
V. BARTELL B.C.L.S.

THIS PLAN LIES WITHIN THE FRASER
FORT GEORGE REGIONAL DISTRICT.

Mc William, Whyte, Goble, & Associates,
BC. Land Surveyors,
Prince George - Kamloops - Smithers.

REF. NO. 76100-29