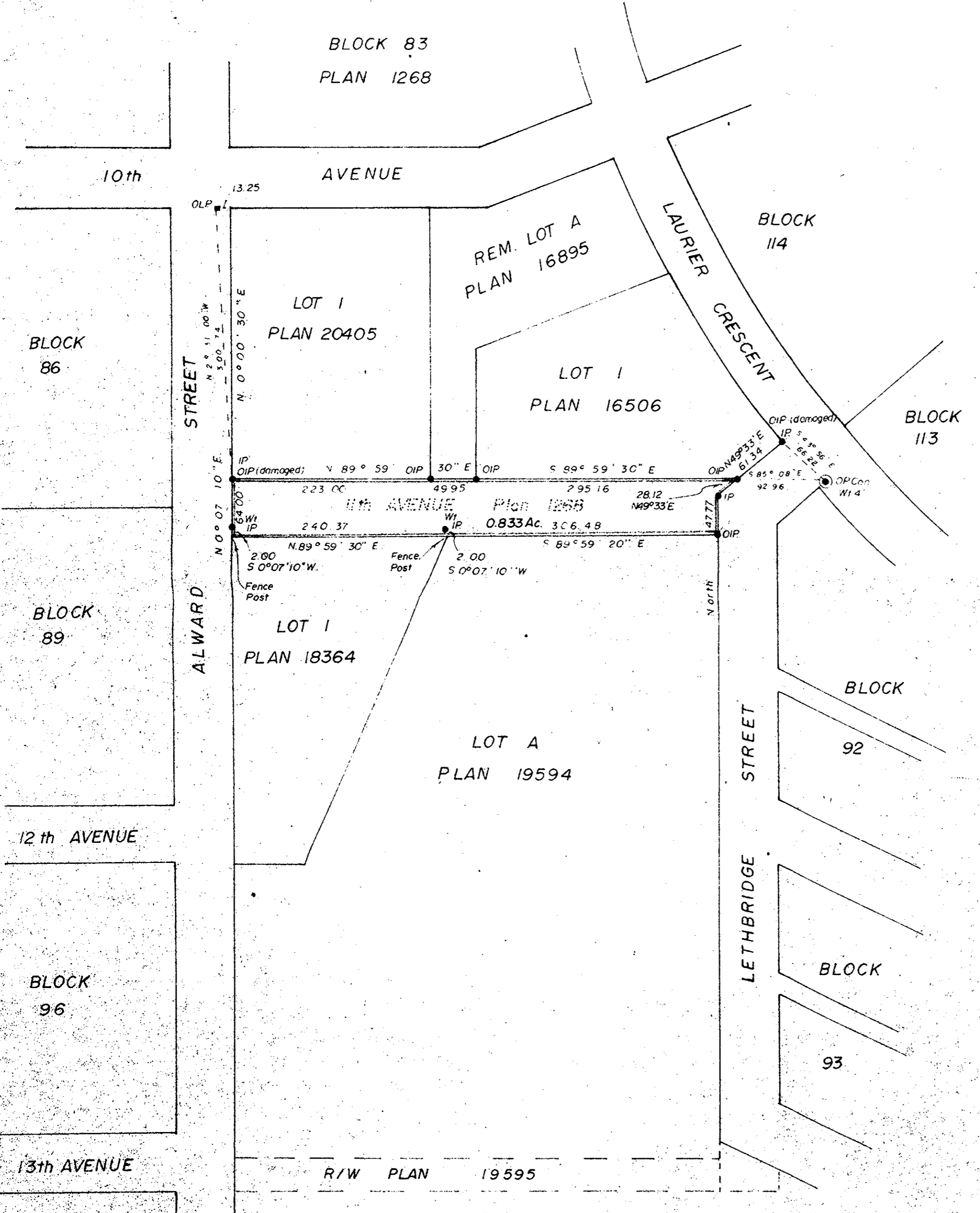


PLAN NO. 23389.  
DEPOSITED IN THE LAND REGISTRY OFFICE AT  
PRINCE GEORGE THIS 20 DAY OF June 1977  
"F.T. Schooley"  
REGISTRAR



REFERENCE PLAN TO ACCOMPANY BY-LAW 2966  
CITY of PRINCE GEORGE  
TO CLOSE PART of 11th AVENUE  
AS DEDICATED ON PLAN 1268 ADJOINING  
LOT 1, PLAN 20405,  
REM LOT A, PLAN 16895,  
LOT 1, PLAN 16506,  
LOT A, PLAN 19594,  
LOT 1, PLAN 18364,  
DISTRICT LOT 343, CARIBOO DISTRICT  
SCALE: 1" = 100'

BEARINGS ARE ASTRONOMIC DERIVED FROM  
PLAN 20405.  
● OLP OLD LEAD PLUG  
● OIP OLD IRON PIN  
● IP STANDARD IRON PIN  
● OPCon POST IN CONCRETE FOUND.

I, V. BARTELL, OF THE CITY OF PRINCE GEORGE,  
BRITISH COLUMBIA LAND SURVEYOR MAKE OATH  
AND SAY THAT I WAS PRESENT AT AND DID  
PERSONALLY SUPERINTEND THE SURVEY REPRESENTED  
BY THIS PLAN AND THAT THE SURVEY AND PLAN  
ARE CORRECT. THE SAID SURVEY WAS  
COMPLETED ON THE 14th DAY OF DECEMBER, 1976.

*Victor Bartell*  
V. BARTELL, B.C.L.S.

SWORN BEFORE ME AT PRINCE GEORGE, B.C.  
THIS 25 DAY OF December 1976.

A COMMISSIONER FOR TAKING AFFIDAVITS  
FOR BRITISH COLUMBIA.

THIS PLAN LIES WITHIN THE FRASER-FORT-  
GEORGE REGIONAL DISTRICT.

McWILLIAM, WHYTE, GOBLE & ASSOCIATES  
B.C. LAND SURVEYORS  
PRINCE GEORGE - KAMLOOPS - SMITHERS

REF. NO. 76100-28