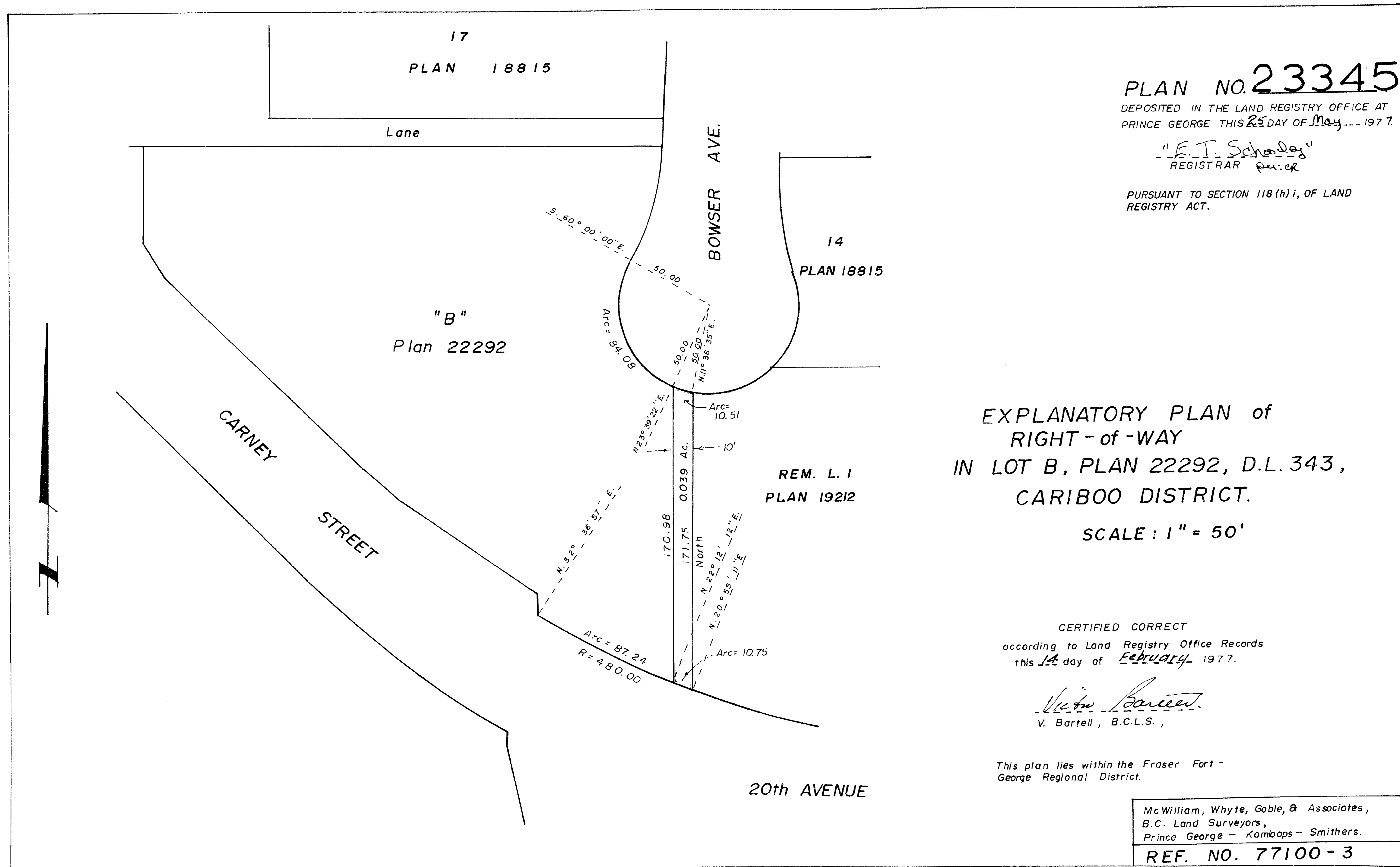


26-226



PLAN NO. **23345**

DEPOSITED IN THE LAND REGISTRY OFFICE AT PRINCE GEORGE THIS 25 DAY OF May 1977.

"E. T. Schooley"
REGISTRAR *Per: cr*

PURSUANT TO SECTION 118(h) i, OF LAND REGISTRY ACT.

EXPLANATORY PLAN of
RIGHT - of -WAY
IN LOT B, PLAN 22292, D.L. 343,
CARIBOO DISTRICT.

SCALE: 1" = 50'

CERTIFIED CORRECT
according to Land Registry Office Records
this 14 day of February 1977.

V. Bartell
V. Bartell, B.C.L.S.,

This plan lies within the Fraser Fort -
George Regional District.

McWilliam, Whyte, Goble, & Associates,
B.C. Land Surveyors,
Prince George - Kamloops - Smithers.

REF. NO. 77100 - 3