

PLAN OF SUBDIVISION OF PART OF  
 LOT A, PLAN 19306  
 DISTRICT LOT 1426  
 CARIBOO DISTRICT - BRITISH COLUMBIA

SCALE: 1" = 50'

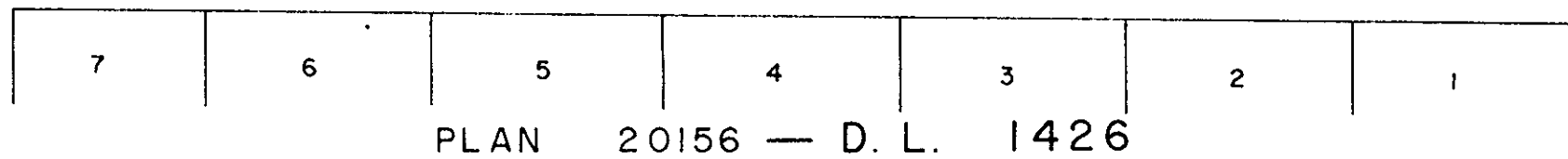
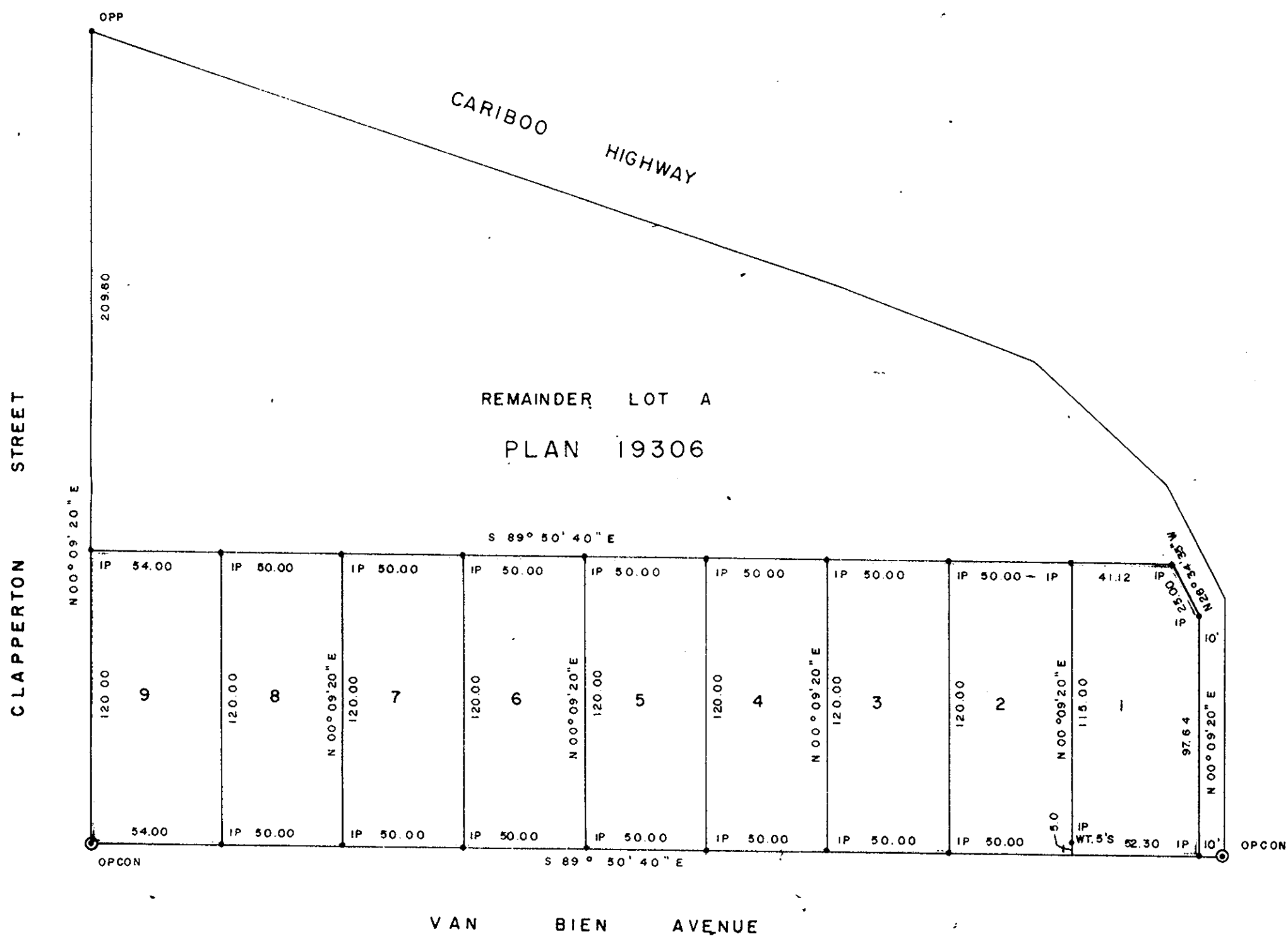
NOTE: Bearings are astronomic, derived from the north boundary of Van Bien Avenue as shown on Plan 20156.

LEGEND: ● OPCON denotes an old concrete monument found.  
 • OPP denotes an old pipe post found.  
 • IP denotes an iron pin set.

PLAN N<sup>o</sup> 23321

Deposited in the Land Registry Office at Prince George, B.C. this 10 day of May, 1977.

E. T. Schooley  
 Registrar



I, DONALD A. DUFFY of the City of Prince George, a British Columbia Land Surveyor, make oath and say that I was present at and did personally superintend the survey represented by this plan and that the survey and plan are correct. The said survey was completed on the 23 day of SEPT, 1976.

*[Signature]*  
 B.C.L.S.

Sworn before me this 23 day of SEPT, 1976.

A Commissioner for taking Affidavits for British Columbia.

*Henry J. Crockett*  
 OWNER

*[Signature]*  
 WITNESS

Approved under the Land Registry Act this 4<sup>th</sup> day of MAY, 1977.

*C. E. Oust*  
 Approving Officer, City of Prince George

This plan lies within the Fraser-Fort George Regional District.

W. D. USHER & ASSOCIATES  
 LAND SURVEYORS  
 PRINCE GEORGE - B.C.  
 JL 21 8386