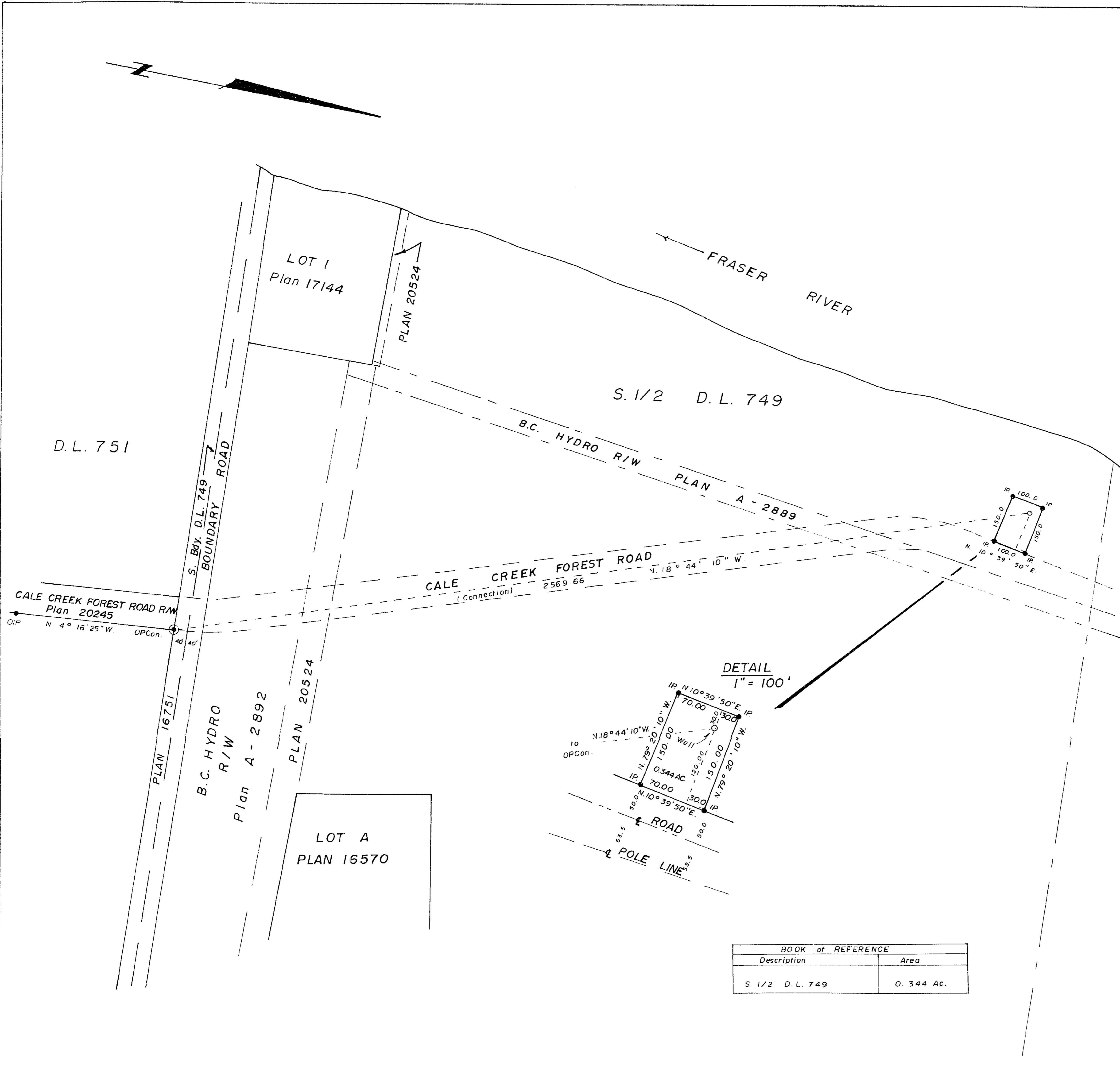


26-226

PLAN NO. **23319**

Deposited in the Land Registry Office at  
Prince George this 21 day of May 1977.

"E. T. Schooley"  
Registrar per: *et*



CITY of PRINCE GEORGE,  
PLAN of RIGHT-of- WAY  
IN SOUTH 1/2, D.L. 749,  
CARIBOO DISTRICT.  
SCALE : 1" = 200'

Bearings are astronomic derived  
from Plan 20245

IP..... Standard Iron Post.  
P Con..... Standard Post in Concrete.  
O ..... Denotes "old"

I, V. Bartell, of the City of Prince George,  
British Columbia Land Surveyor, make oath and  
say that I was present at and did personally  
superintend the survey represented by this  
plan and that the survey and plan are correct.  
The said survey was completed on  
the 21 day of March, 1977.

*V. Bartell*  
V. Bartell, B.C.L.S.

Sworn before me at Prince George, BC,  
this 5 day of May, 1977.

*[Signature]*  
A Commissioner for taking affidavits  
for British Columbia.

This plan lies within the Fraser Fort-  
George Regional District.

BOOK of REFERENCE	
Description	Area
S 1/2 D.L. 749	0.344 Ac.

McWilliam, Whyte, Goble, & Associates,  
B.C. Land Surveyors,  
Prince George - Kamloops - Smithers.

REF. NO. 77100 - 10

D.L. 749