

26-226

PLAN OF RIGHT-OF-WAY THROUGH
 LOTS 6 & 7, PLAN 23248
 DISTRICT LOT 1574
 CARIBOO DISTRICT - BRITISH COLUMBIA
 SCALE: 1" = 50'

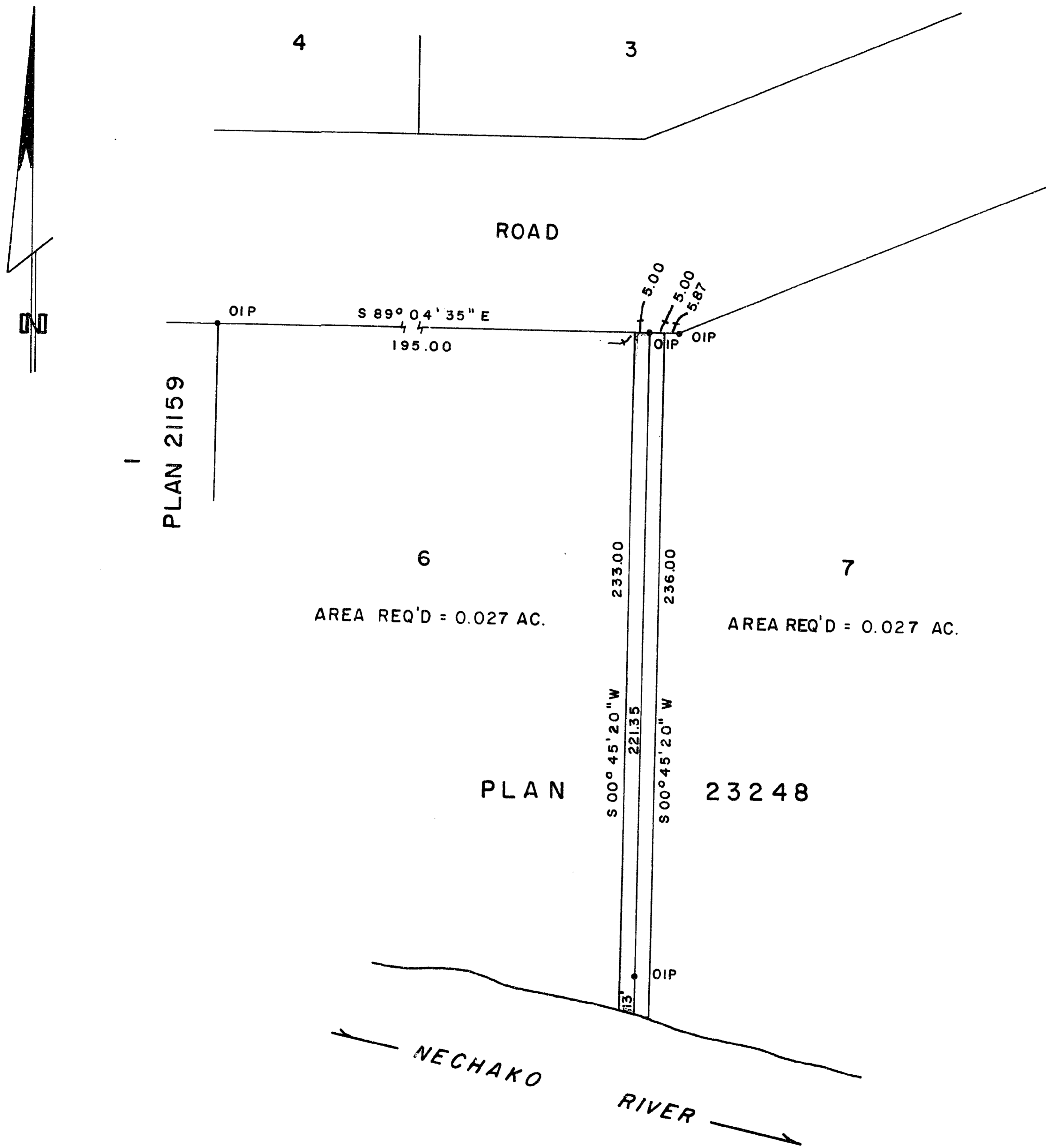
NOTE: Bearings are astronomic, derived from the
 east boundary of Lot 6, Plan 23248.

LEGEND: • OIP denotes an old iron pin found.

PLAN N^o 23273

Deposited in the Land Registry
 Office at Prince George, B.C. this
14 day of April, 1977

"E. T. Schooley"
 Registrar *per: ct*



I, DONALD A. DUFFY of the City of Prince George,
 a British Columbia Land Surveyor, make oath and say
 that I was present at and did personally superintend
 the survey represented by this plan and that the survey
 and plan are correct. The said survey was completed
 on the 18 day of Oct., 1976

[Signature]
 B.C.L.S.

Sworn before me this 12
 day of April, 1977

[Signature]
 A Commissioner for taking Affidavits
 for British Columbia.

This plan lies within the Fraser-Fort George
 Regional District.

W. D. USHER & ASSOCIATES
 LAND SURVEYORS
 PRINCE GEORGE - B.C.
 5599 E