

PLAN OF SUBDIVISION OF PART OF
 LOT 1, PLAN 13111
 DISTRICT LOT 753
 CARIBOO DISTRICT - BRITISH COLUMBIA

SCALE: 1" = 100'

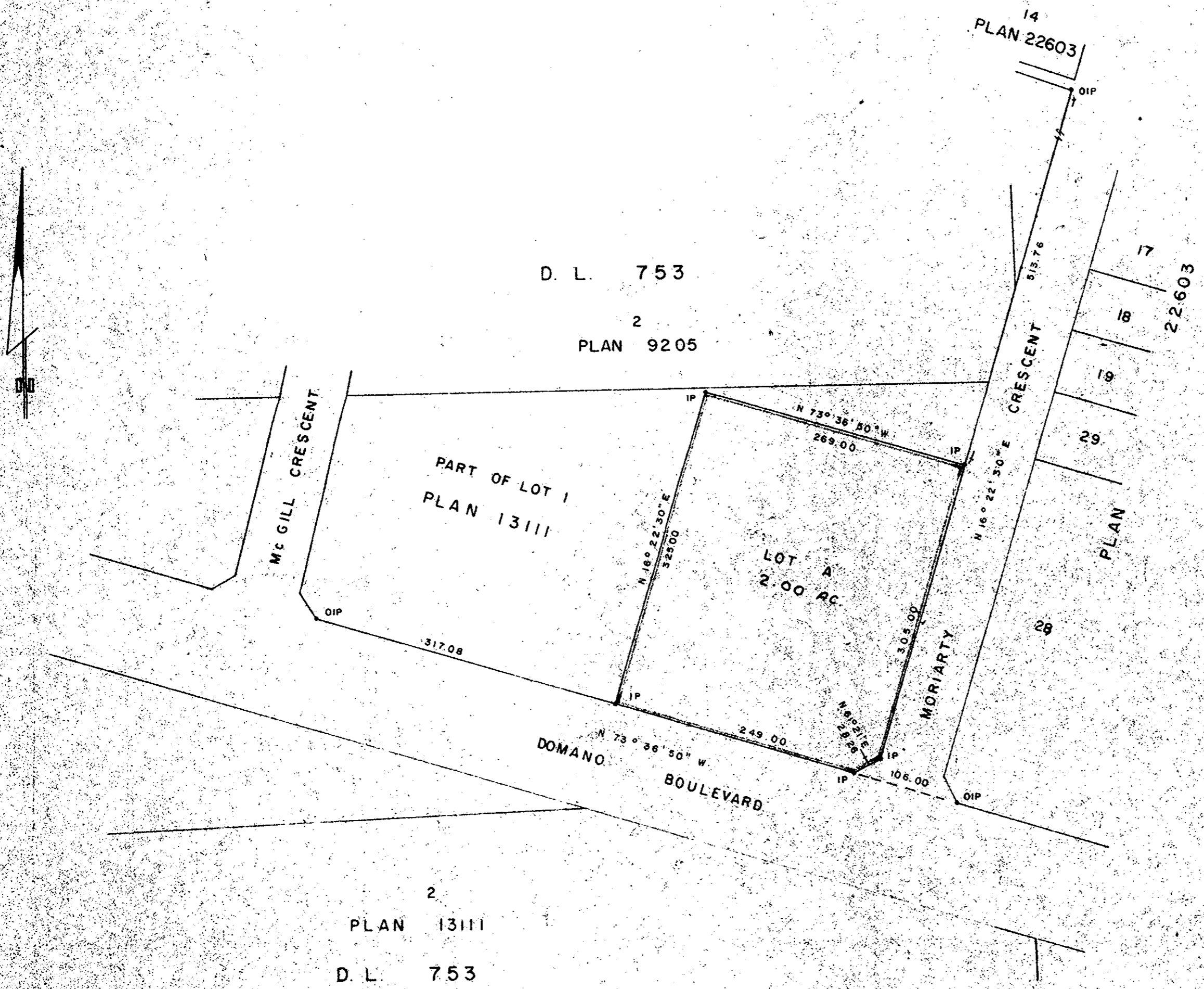
NOTE: Bearings are astronomic, derived from the west boundary of Moriarty Crescent, Plan 22603.

LEGEND:
 • OIP denotes an old iron pin found.
 • IP denotes an iron pin set.

PLAN N^o 22603

Deposited in the Land Registry Office at Prince George, B.C. this 1 day of April, 1977

"F. J. Schooley"
 Registrar



D. L. 753

2
 PLAN 9205

2
 PLAN 13111

D. L. 753

I, DONALD A. DUFFY of the City of Prince George, a British Columbia Land Surveyor, make oath and say that I was present at and did personally superintend the survey represented by this plan and that the survey and plan are correct. The said survey was completed on the 10 day of FEB, 1977.

[Signature]
 B.C.L.S.

Sworn before me this 7 day of March, 1977.

A Commissioner for Taking Affidavits for British Columbia.

HEIGHTS LAND DEVELOPMENT CO. LTD.

[Signature]
[Signature]

Approved under the Land Registry Act this 23 day of MARCH, 1977.

[Signature]
 Approving Officer, City of Prince George

This plan lies within the Fraser-Fort George Regional District.

W. D. USHER & ASSOCIATES
 LAND SURVEYORS
 PRINCE GEORGE - B.C.

JA 53 5970 - 0